

DATASHEET

BACK PRESSURE MAINTAINING VALVE (BPMV): H200 AND H201

MODEL TYPE	
H200	DOME LOADED INTERNALLY
H201	DOME LOADED EXTERNALLY

MAXIMUM INLET PRESSURE	
1	6,000 Psi (414 Bar)

SET PRESSURE RANGE	
1	30 ~ 6,000 Psi (2.0 ~ 414 Bar)

MATERIAL	
AA	ALUMINIUM ALLOY
SS	STAINLESS STEEL
AB	ALUMINIUM BRONZE
BR	BRASS

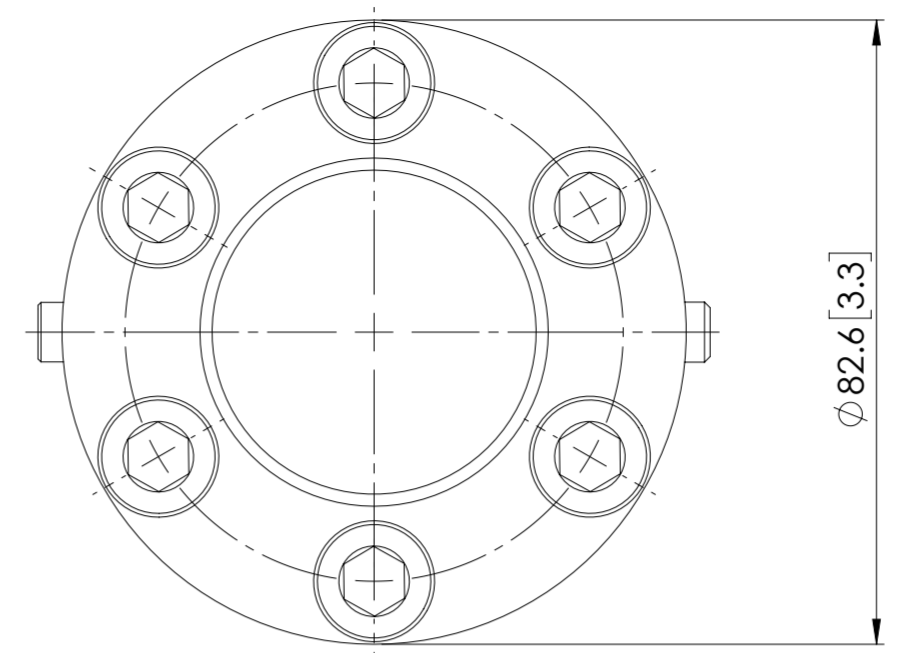
MODEL CODE							
H200	1	1	AA	37P	N	NY	0

GAUGE PORT	
0	NO PORT
GI	1/4" BSPP INLET
GO	1/4" BSPP OUTLET
GB	1/4" BSPP INLET & OUTLET

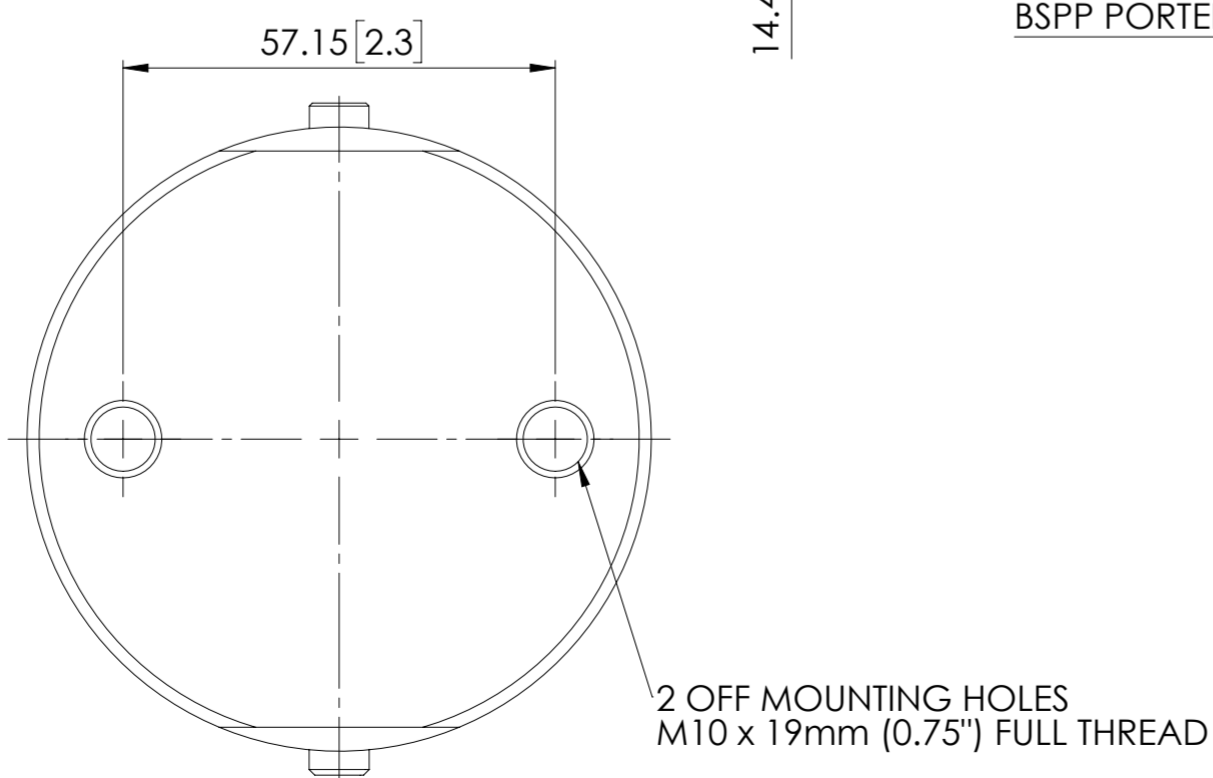
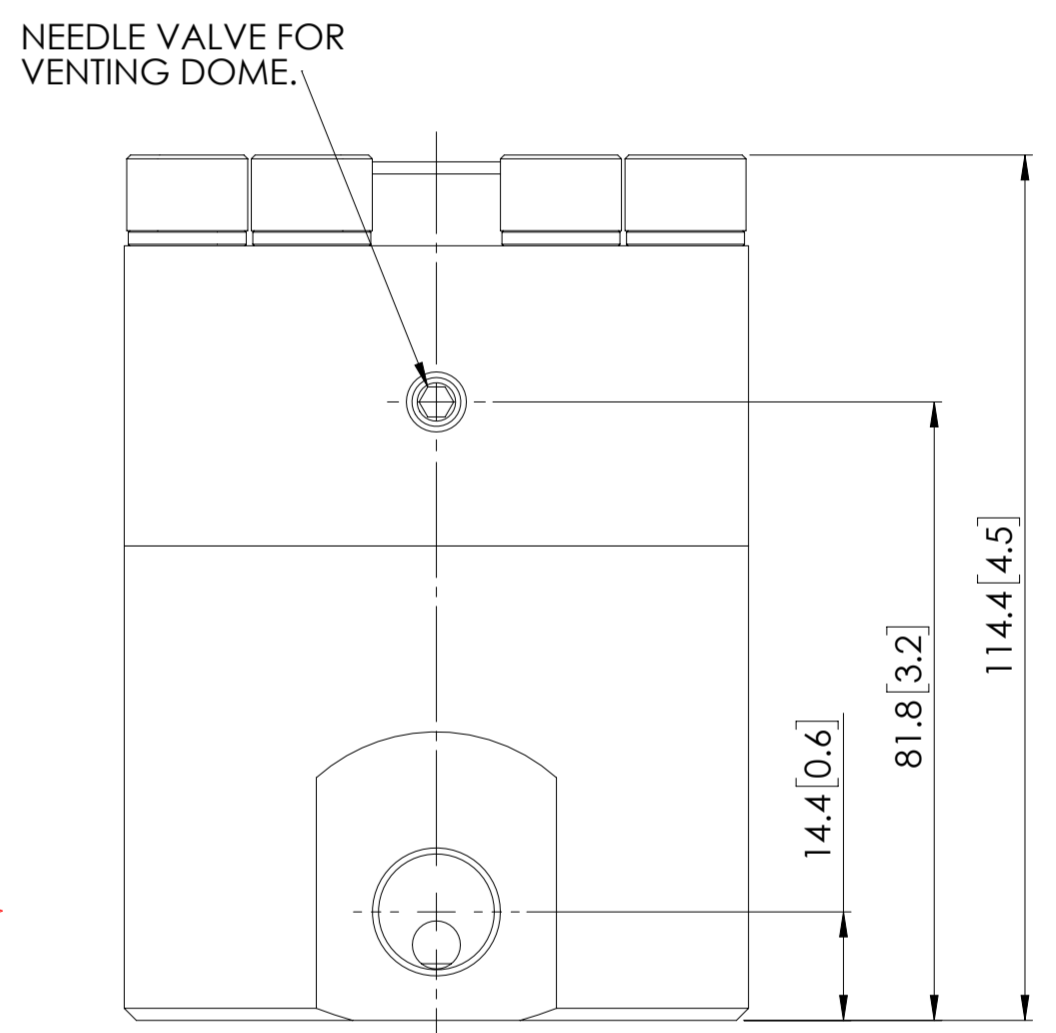
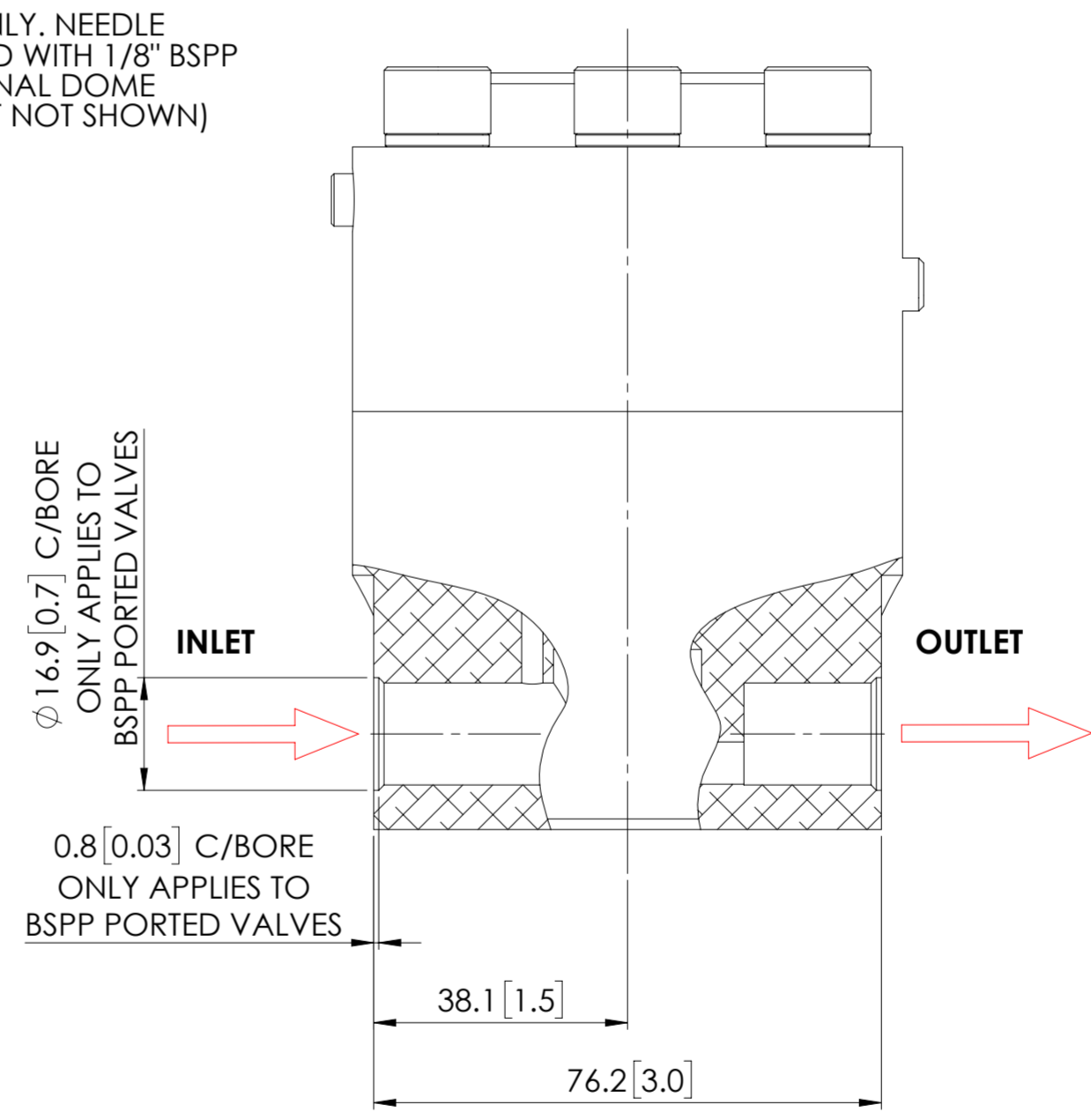
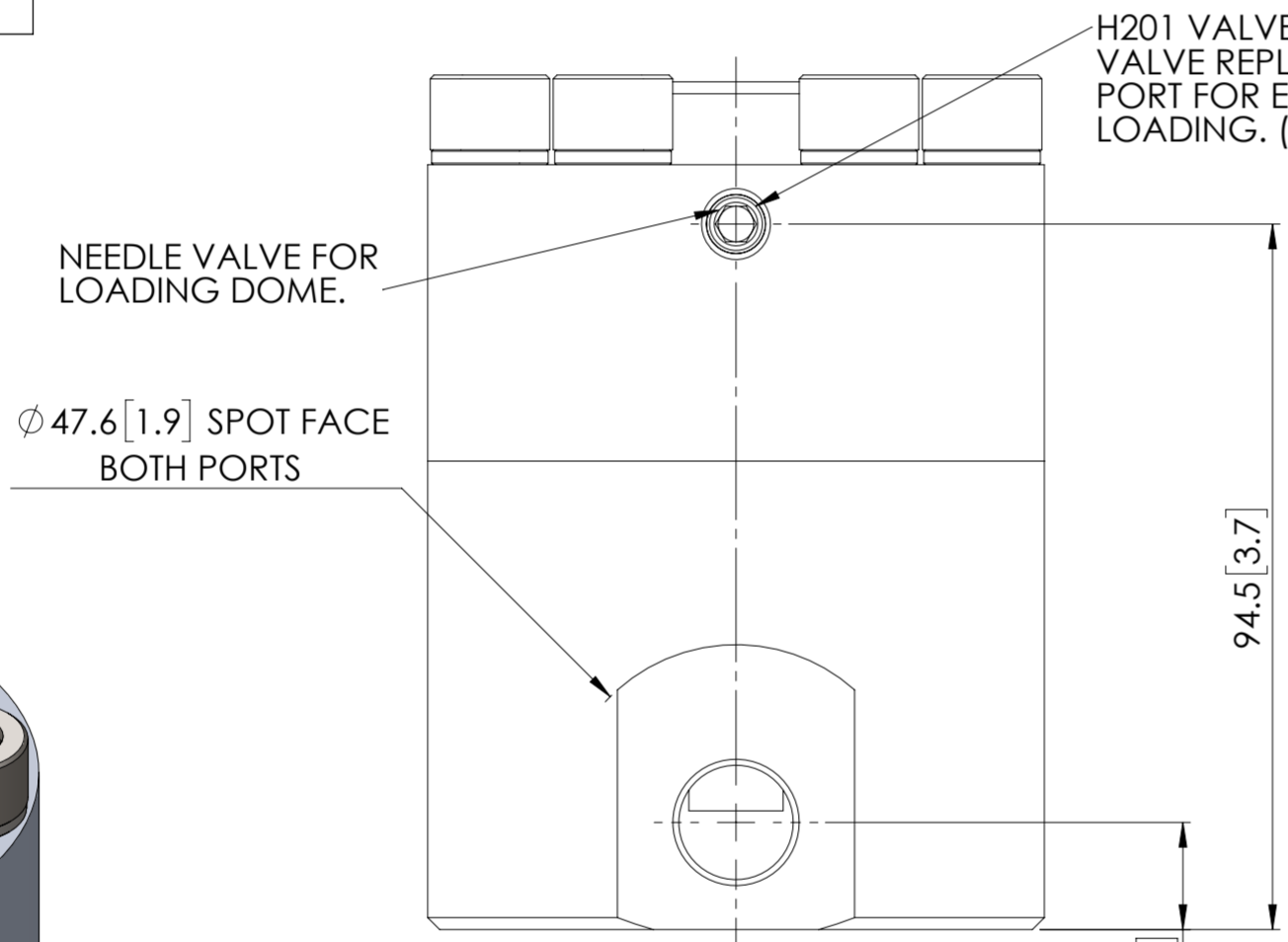
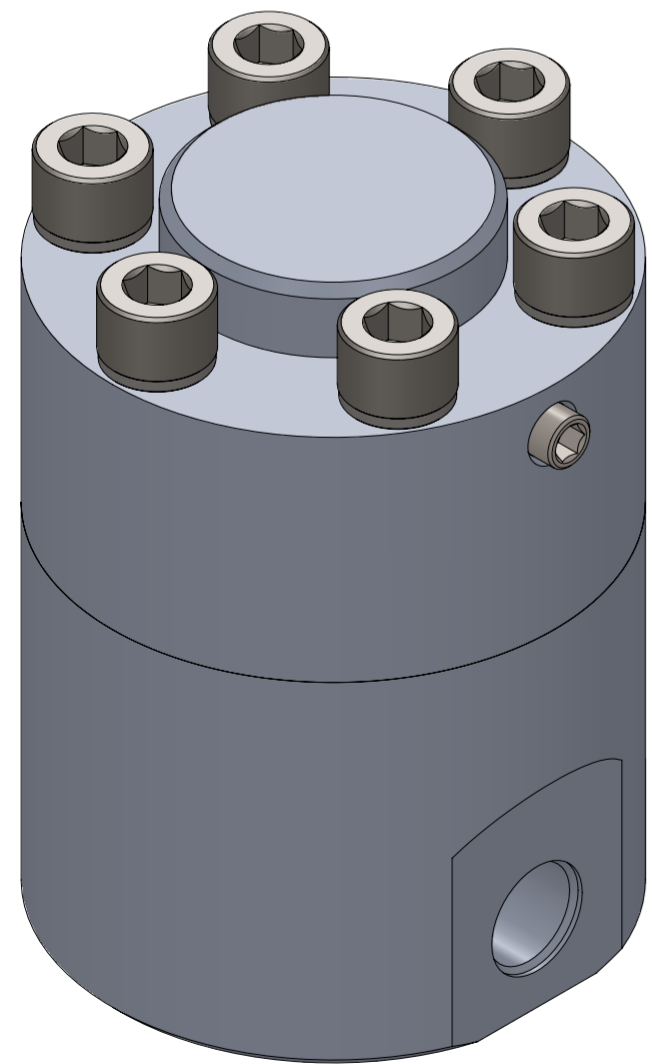
SEAT MATERIAL	
NY	NYLON

SEALS	
N	NITRILE
V	VITON

PORTING	
37P	3/8" BSPP
37N	3/8" NPT



- SPECIFICATION**
- ORIFICE: 6.35mm (1/4")
 - MEDIUM: H200 - GAS ONLY
 - MEDIUM: H201 - GAS AND LIQUID
 - DRY WEIGHT: 2.5 kg (5.50 lb) (ALUMINIUM ALLOY)
 - OXYGEN SERVICE AVAILABLE



© AND DESIGN RIGHT Bis Wells LTD. ALL RIGHTS RESERVED. WITHOUT THE PRIOR WRITTEN PERMISSION OF Bis Wells Ltd NO PART OF THIS DOCUMENT MAY BE ALTERED, ADAPTED, PUBLISHED, REPRODUCED OR TRANSMITTED IN ANY FORM OR MEDIUM.				UNLESS OTHERWISE SPECIFIED DIMENSIONS ARE METRIC 1. LINEAR TOLERANCES : ±0.1mm 2. ANGULAR TOLERANCES : ± 2°						
DRAWN	J.PHELAN	SHEET	1 OF 1	 3RD ANGLE PROJECTION	DRAWING SIZE	A2	DRAWING SCALE	1:2	DRAWING NUMBER	DS0012
DATE	31/06/19	ISSUE	1							