

DATASHEET

BACK PRESSURE MAINTAINING VALVES (BPMV): H12

MODEL CODE						
H12	1	1	SS	37P	N	NY

MODEL TYPE	
H12	BACK PRESSURE MAINTAINING VALVE

INLET PRESSURE	
1	1,000 Psi (69 Bar)

SET PRESSURE RANGE	
1	5~ 50 Psi (0 ~ 3.5 Bar)
2	30 ~ 300 Psi (2.1 ~ 21 Bar)
3	100 ~ 1,000 Psi (7 ~ 69 Bar)

MATERIAL	
A	ALUMINIUM
AB	ALUMINIUM BRONZE
BR	BRASS
SS	STAINLESS STEEL

SEAT MATERIAL	
NY	POLYMER
PT	PTFE

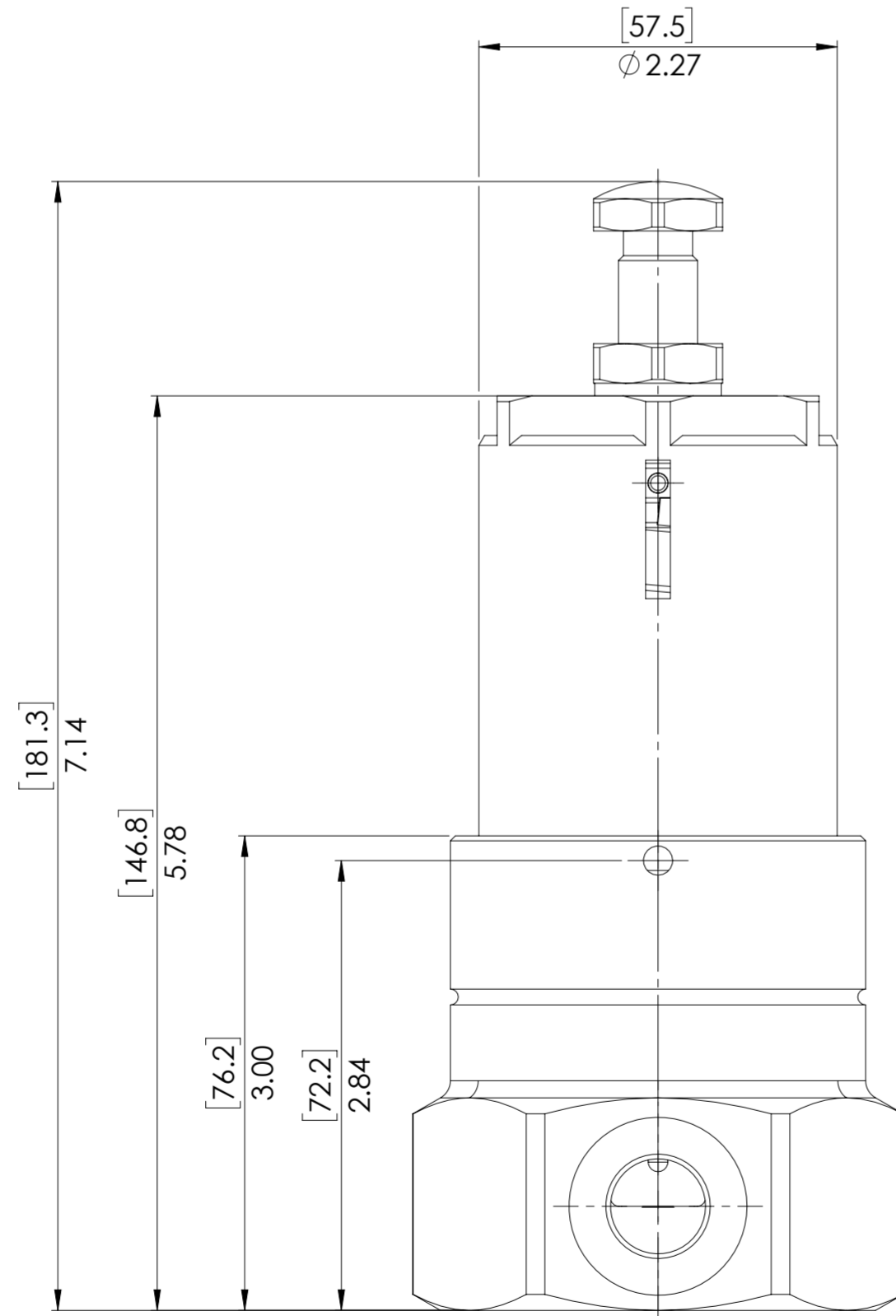
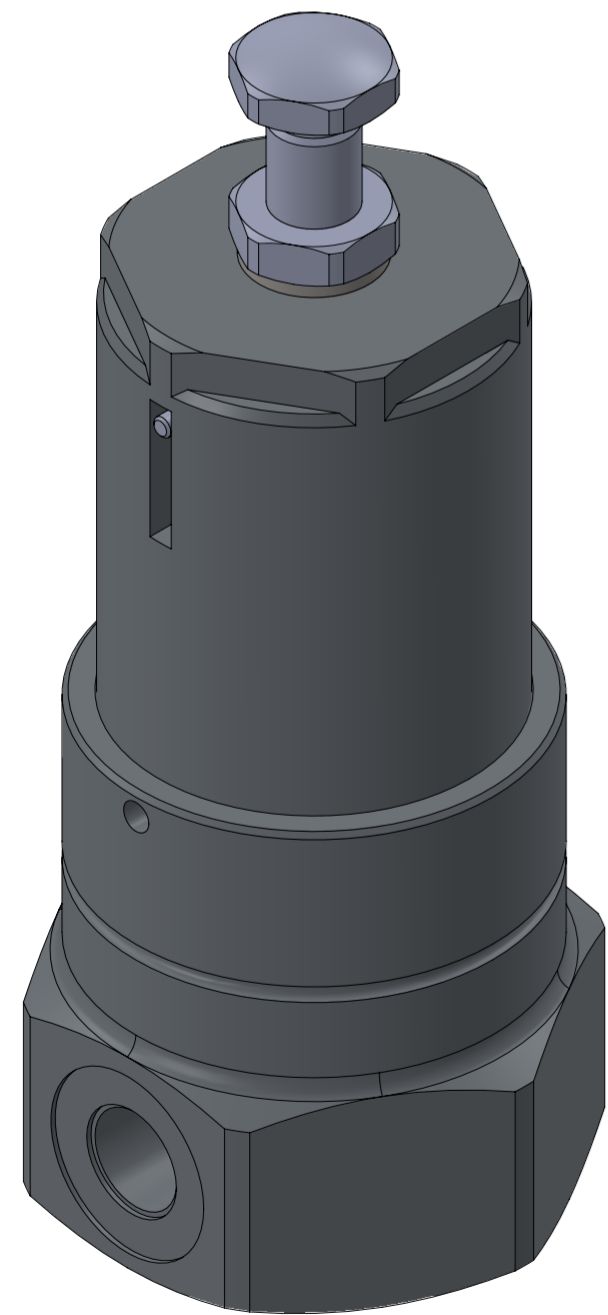
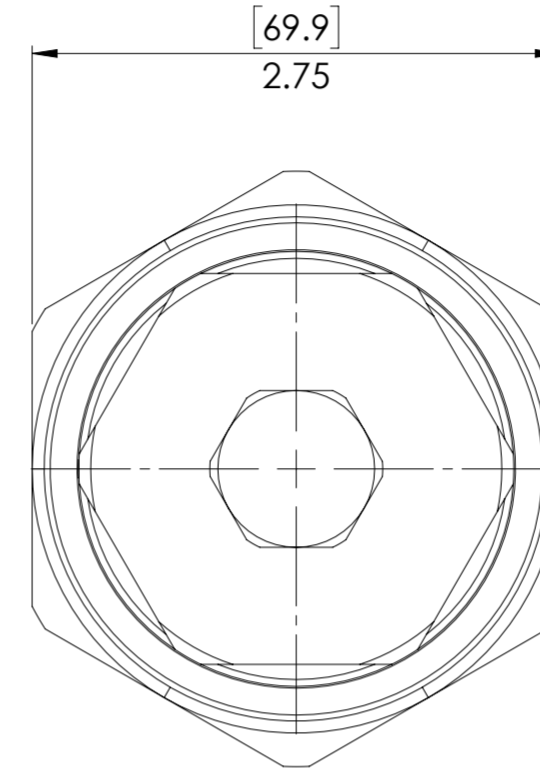
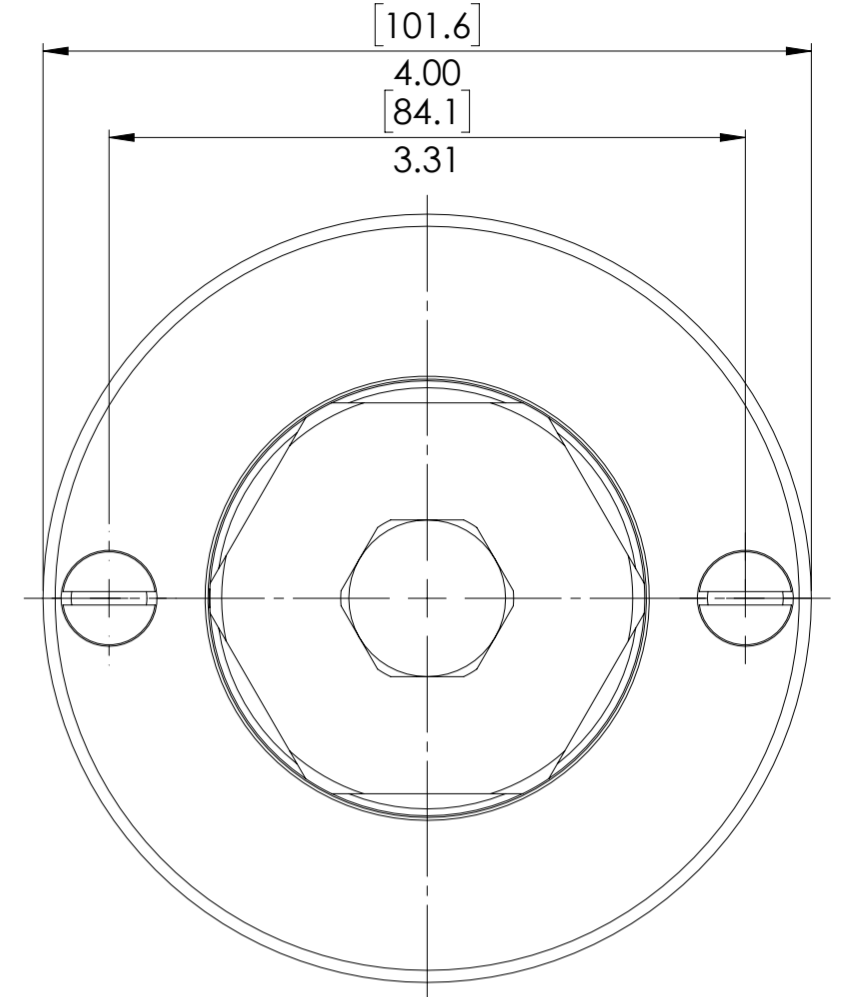
SEAL MATERIAL	
N	NITRILE
V	VITON

PORTS	
25P	1/4 BSPP
25N	1/4 NPT
37P	3/8 BSPP
37N	3/8 NPT

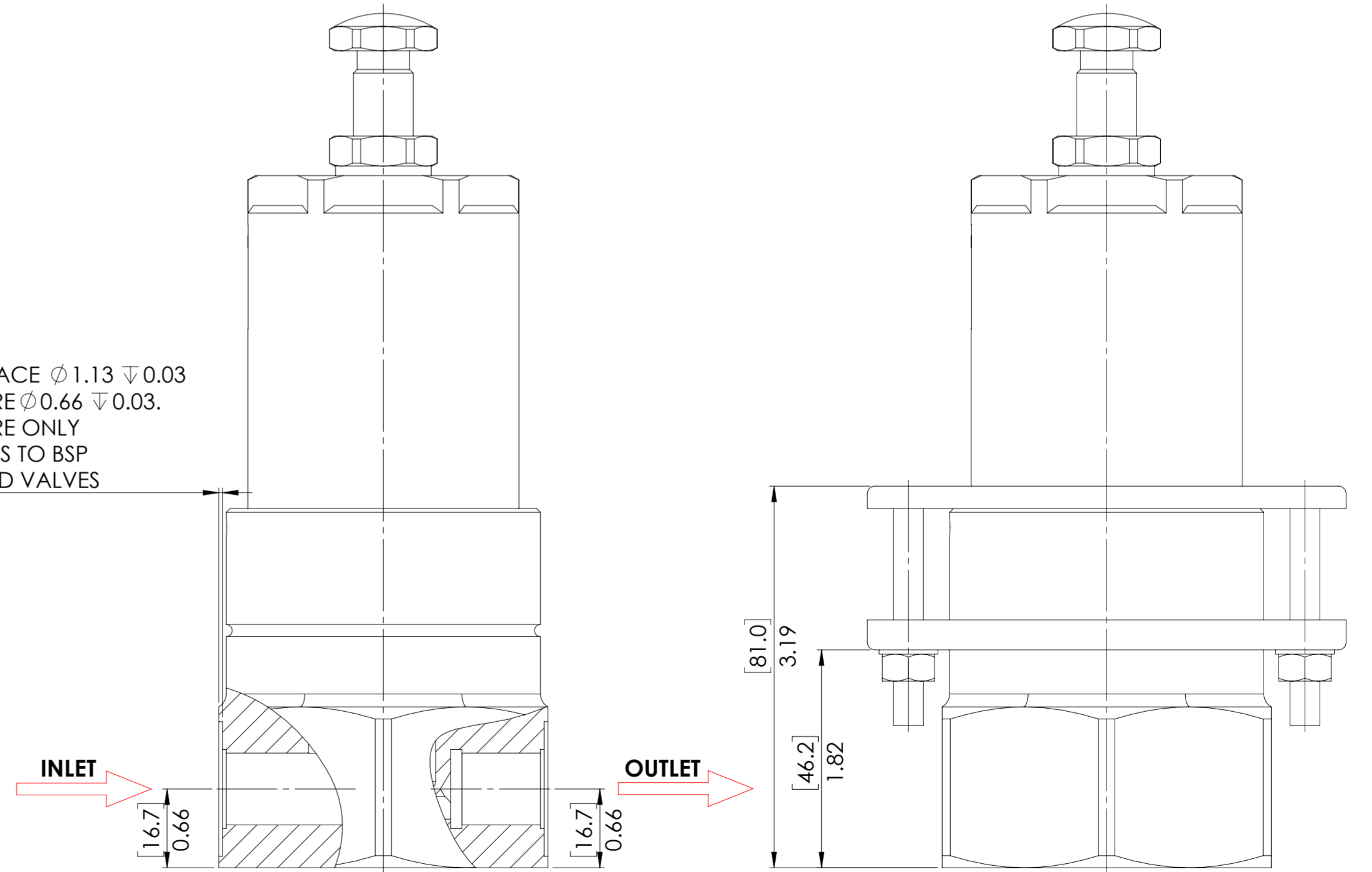
SPECIFICATION

- ORIFICE: 4.8mm(0.19")
- MEDIUM: GAS AND LIQUID
- DRY WEIGHT: 1.50 kg (3.30 lb)
(ALUMINIUM ALLOY)

MOUNTING OPTION AVAILABLE



SPOTFACE $\phi 1.13 \nabla 0.03$
 C/BORE $\phi 0.66 \nabla 0.03$.
 C/BORE ONLY
 APPLIES TO BSP
 PORTED VALVES



© AND DESIGN RIGHT BIS WELLS LTD. ALL RIGHTS RESERVED. WITHOUT THE PRIOR WRITTEN PERMISSION OF BIS WELLS LTD NO PART OF THIS DOCUMENT MAY BE ALTERED, ADAPTED, PUBLISHED, REPRODUCED OR TRANSMITTED IN ANY FORM OR MEDIUM.				UNLESS OTHERWISE SPECIFIED DIMENSIONS ARE IN INCHES 1. LINEAR TOLERANCES : ± 0.1 " 2. ANGULAR TOLERANCES : $\pm 2^\circ$						
DRAWN BY	N.DANIEL	SHEET	1 OF 1	 3RD ANGLE PROJECTION	DRAWING SIZE	A2	DRAWING SCALE	1:1	DRAWING NUMBER	DS0033
DATE	24/01/20	ISSUE	1							