

# DATASHEET

## PNEUMATIC AND HYDRAULIC REGULATORS: A16 & A17 SERIES

MODEL CODE										
A	16 -	A	N	P	37P	0	0	0	V	0

MODEL TYPE	A	PRESSURE REGULATOR
------------	---	--------------------

REGULATED PRESSURE	16 -	0 ~ 1,000 Psi
	17 -	0 ~ 4,000 Psi

MATERIAL	A	ALUMINIUM
	AB	ALUMINIUM BRONZE
	BR	BRASS
	SS	STAINLESS STEEL

SEAL MATERIAL	N	NITRILE
	V	VITON

SEAT MATERIAL	P	POLYMER
	S	STAINLESS

PORTS	37N	3/8 NPT
	37P	3/8 BSP
	50N	1/2 NPT
	50P	1/2 BSP

HANDWHEEL	0	STANDARD HANDWHEEL
	L	LOCKING

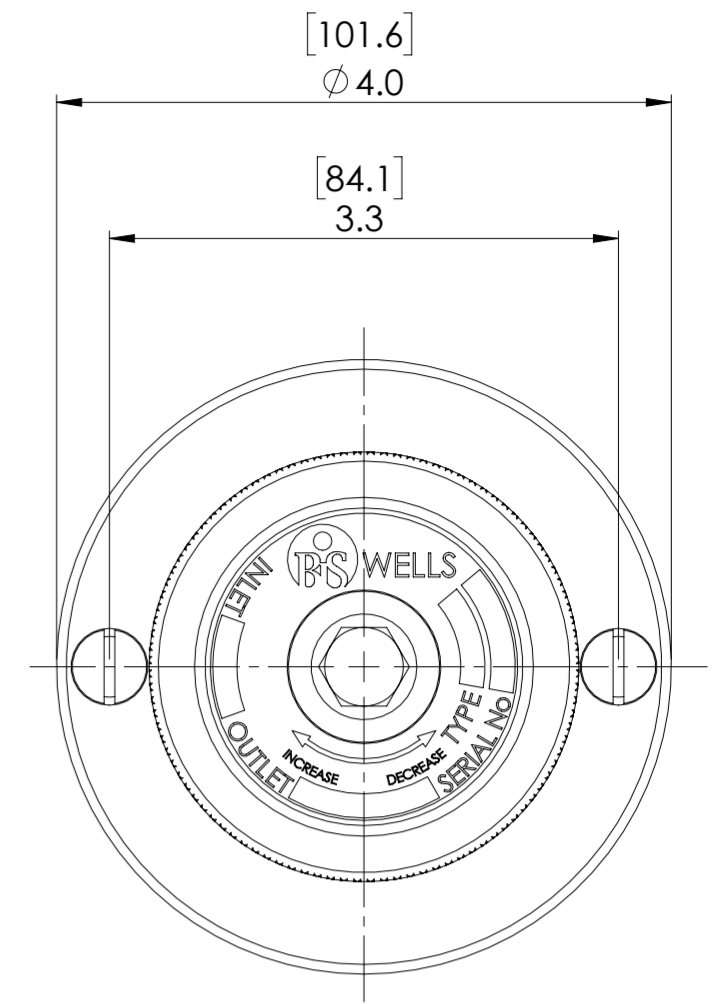
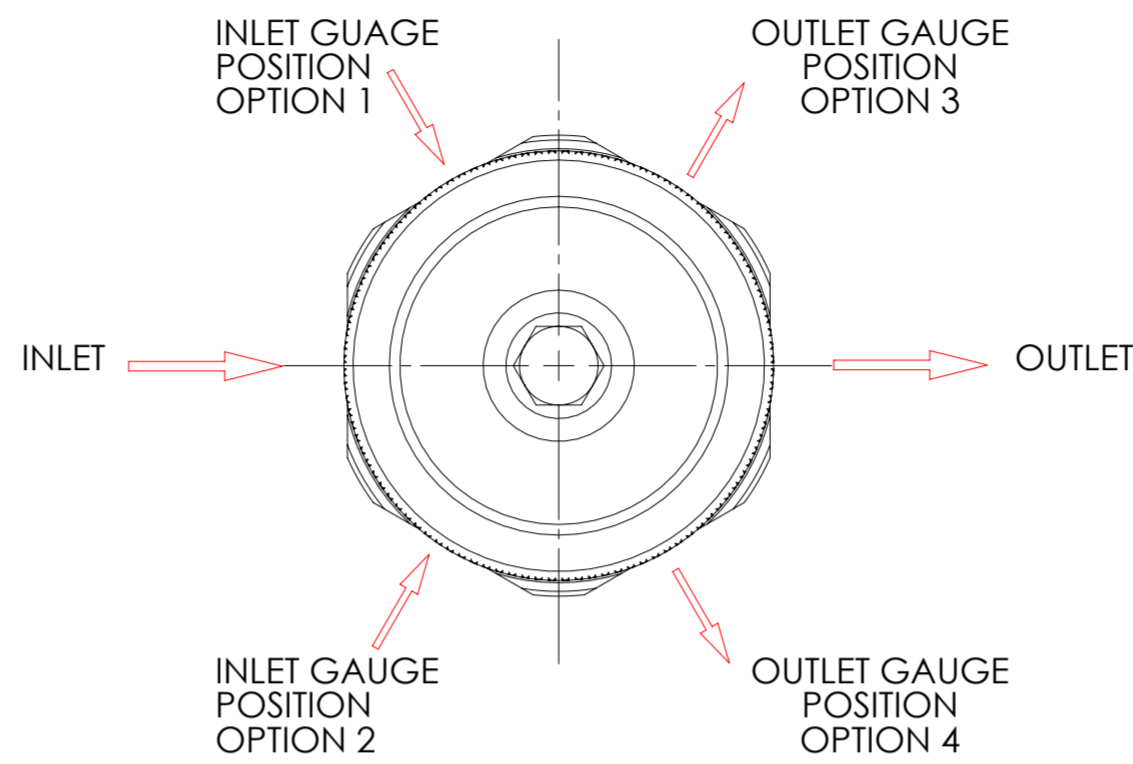
VENTING	V	VENTING
	NV	NON VENTING

MOUNTING	0	NO MOUNTING
	PM	PANEL MOUNTING

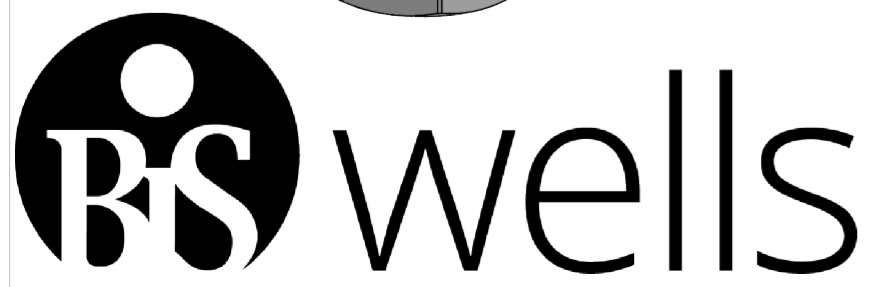
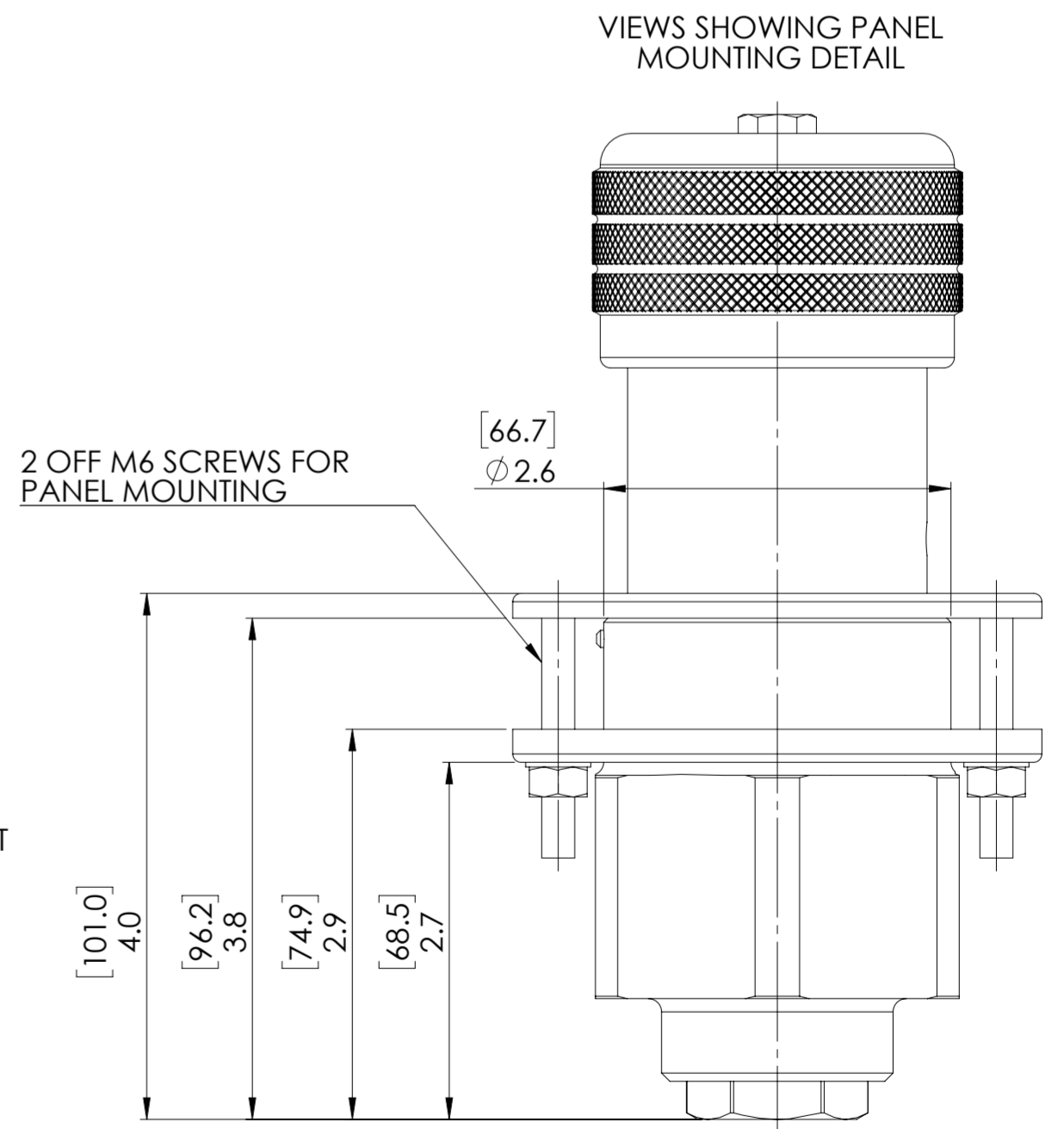
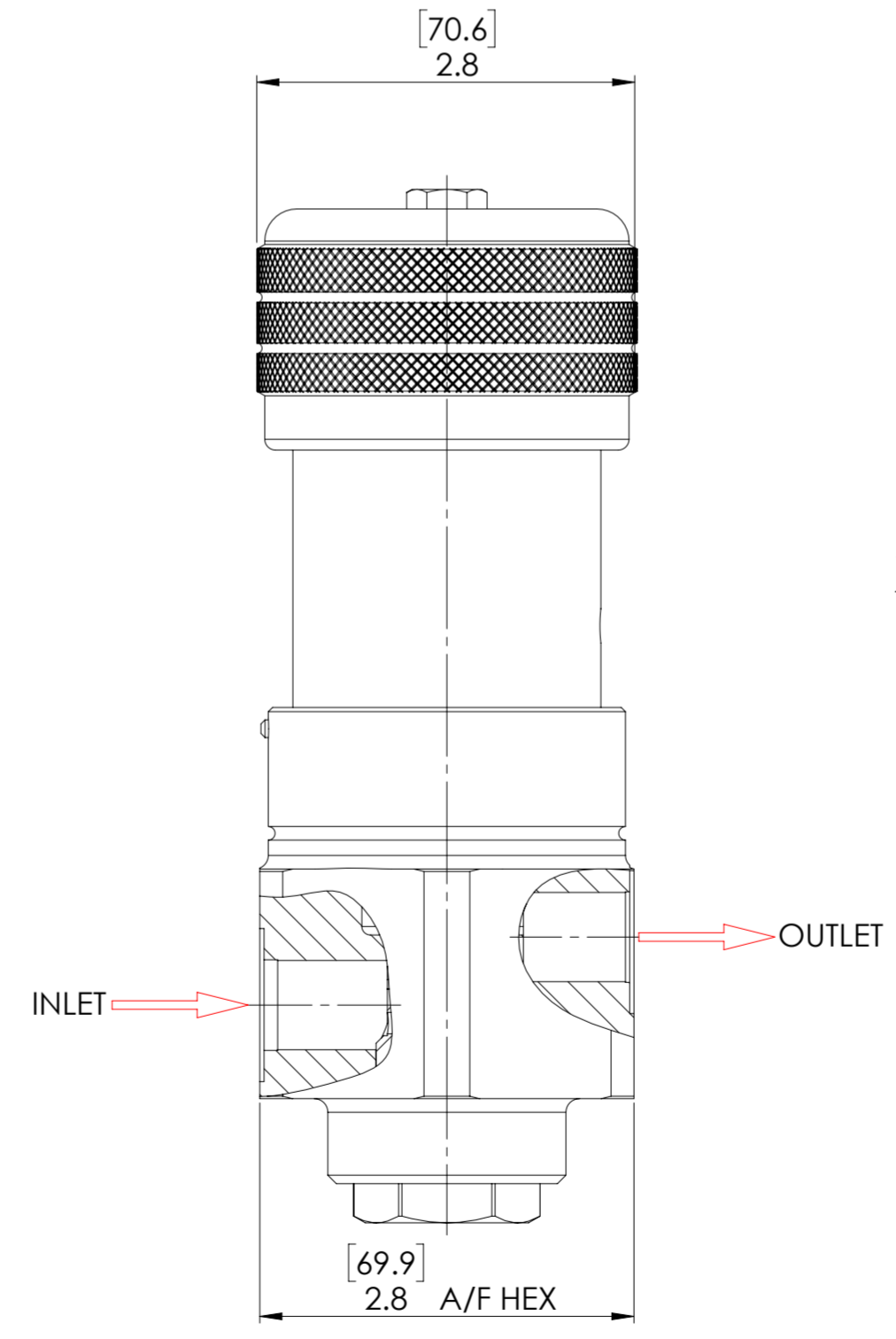
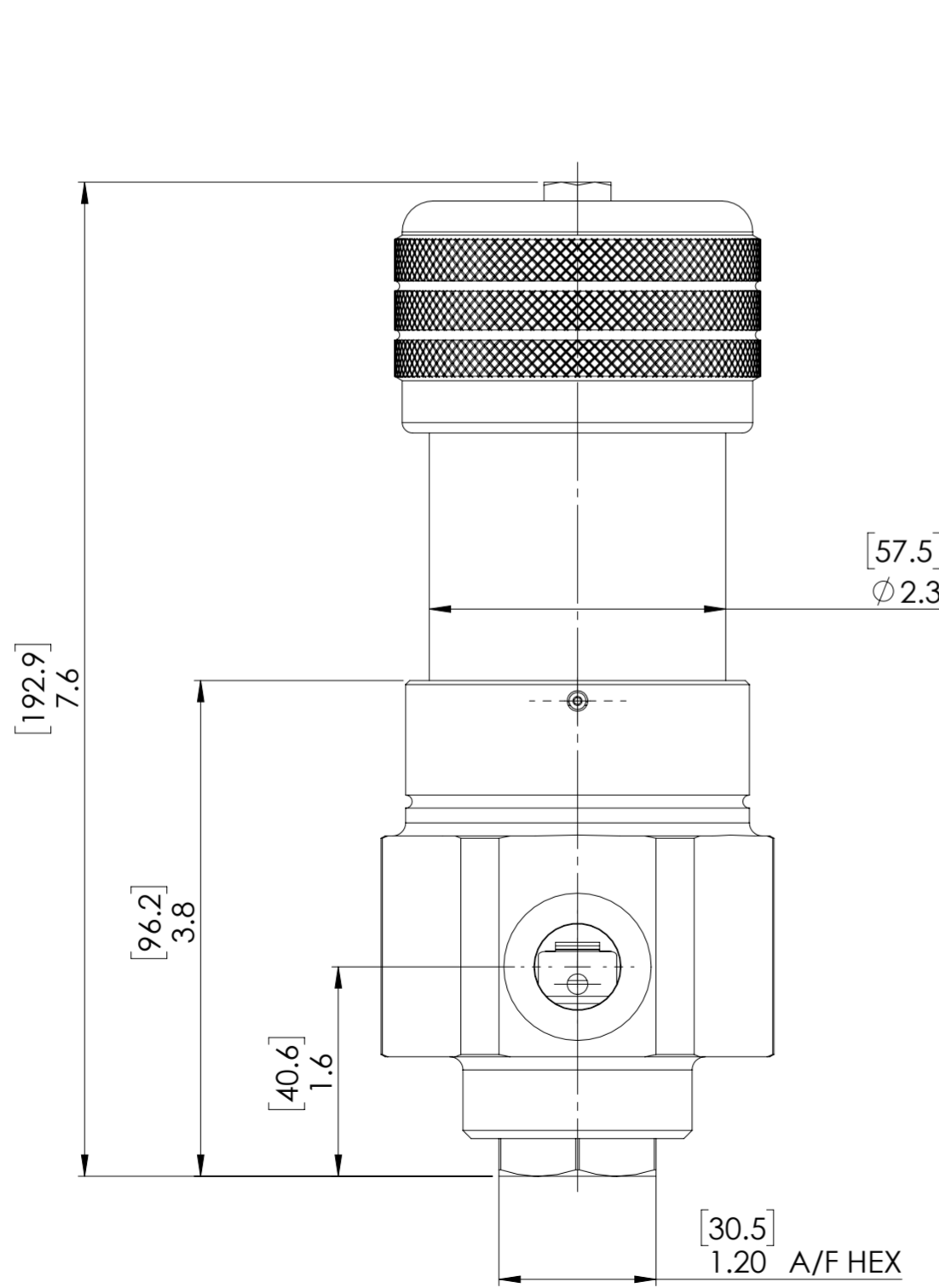
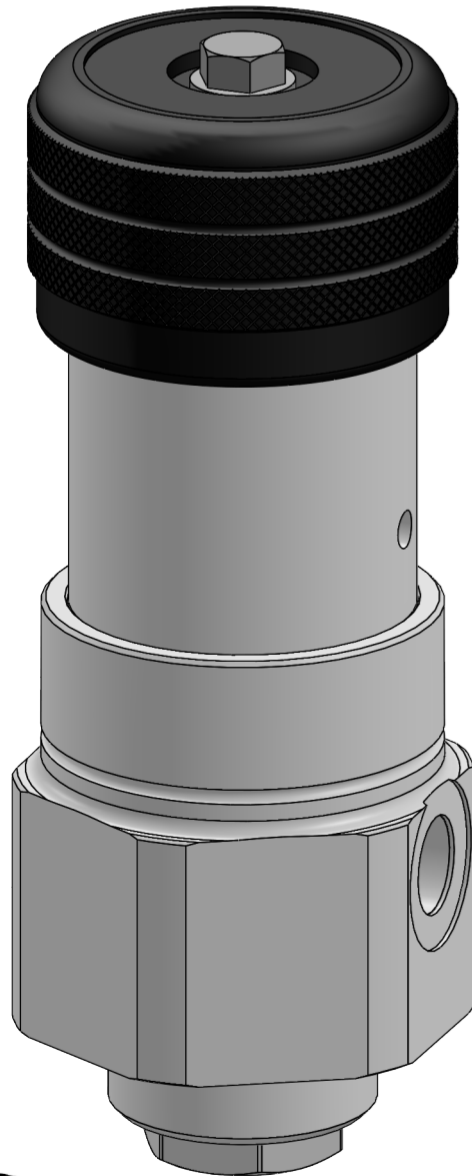
OUTLET GAUGE PORT	0	NO PORT
	3	1/4" NPT
	4	1/4" NPT

INLET GAUGE PORT	0	NO PORT
	1	1/4" NPT
	2	1/4" NPT

FOR OXYGEN SERVICE  
SPECIFY: A16OX / A17OX



- INLET PRESSURE: 4,500 Psi
- WEIGHT: 2.16 Kg (ALUMINIUM VERSION)
- Cv: 0.6
- LOCKING OPTION AVAILABLE
- OXYGEN SERVICE OPTION



© AND DESIGN RIGHT BIS WELLS LTD. ALL RIGHTS RESERVED. WITHOUT THE PRIOR WRITTEN PERMISSION OF BIS WELLS LTD NO PART OF THIS DOCUMENT MAY BE ALTERED, ADAPTED, PUBLISHED, REPRODUCED OR TRANSMITTED IN ANY FORM OR MEDIUM.				UNLESS OTHERWISE SPECIFIED DIMENSIONS ARE IN INCHES 1. LINEAR TOLERANCES : $\pm 0.1$ " 2. ANGULAR TOLERANCES : $\pm 2^\circ$			
DRAWN	J.PHELAN	SHEET	1 OF 1	DRAWING SIZE	A2	DRAWING SCALE	1:2
DATE	30/10/19	ISSUE	2	3RD ANGLE PROJECTION		DRAWING NUMBER	DS0001