

Installation Operation and Maintenance Manual

BACK PRESSURE MAINTAINING VALVE H15 & H15SS



THIS DOCUMENT is only applicable to the service of the H15 & H15SS back pressure maintaining valve (BPMV). General instructions regarding installation, operation and maintenance for all types of valves must be read prior.

BACK PRESSURE MAINTAINING VALVES INSTRUCTIONS.

These instructions are confined to the replacement of the Valve Seat, Valve and O-Ring seals only. Any damage caused to other components would require the units return to the manufacturer.

Before undertaking any servicing of the BPMV, ensure the valve is completely isolated from the supply and outlet pressures, and any pressure in the valve has been removed.

Before commencing the valve refurbishment, it is recommended that the valve be removed from the line and worked on in a clean environment.

Cleanliness during assembly is most important, particularly on all sealing surfaces.

BEFORE SERVICE, REFER TO THE BPMV GENERAL INSTRUCTIONS

H15 & H15SS SETTING & SET PRESSURE

The set pressure is the pressure where the valve opens and begins to pass flow. The set pressure range is listed on the data sheet and the information will also be marked on the valve.

To set the valve please follow the below instructions:

1. Connect the valve inlet to a suitable pressure supply.
2. Using a peg spanner remove item 7.
3. Using a peg spanner wind in item 8 until resistance from the spring is felt. By winding in item 8 the valve will be forced against the valve seat. The further item 8 is wound in the more force will be applied to the seat and an increased set pressure will be achieved.
4. Gradually increase pressure to the inlet and observe the valve opening pressure.
5. Continue to wind in item 8 to and continue to observe the valve opening pressure.
6. If during setting the desire set pressure is exceeded, item 8 can be unwound.
7. When the desired set pressure is achieved item 7 can be fitted.
8. The valve is now set.

H15 & H15SS SERVICING

DISMANTLING

9. Remove the top Cap (7) and slacken the Adjuster (8).
10. Remove the Inlet Connection (9) complete with the Valve Seat (2), Seat Housing (10) and O-Rings, (5) and (6).
11. Remove the Valve (1), O-Ring (4) and Anti-Extrusion Ring (3) from the Valve Guide Insert (12).
12. Check all components for damage or wear. Damaged or worn components should not be used.

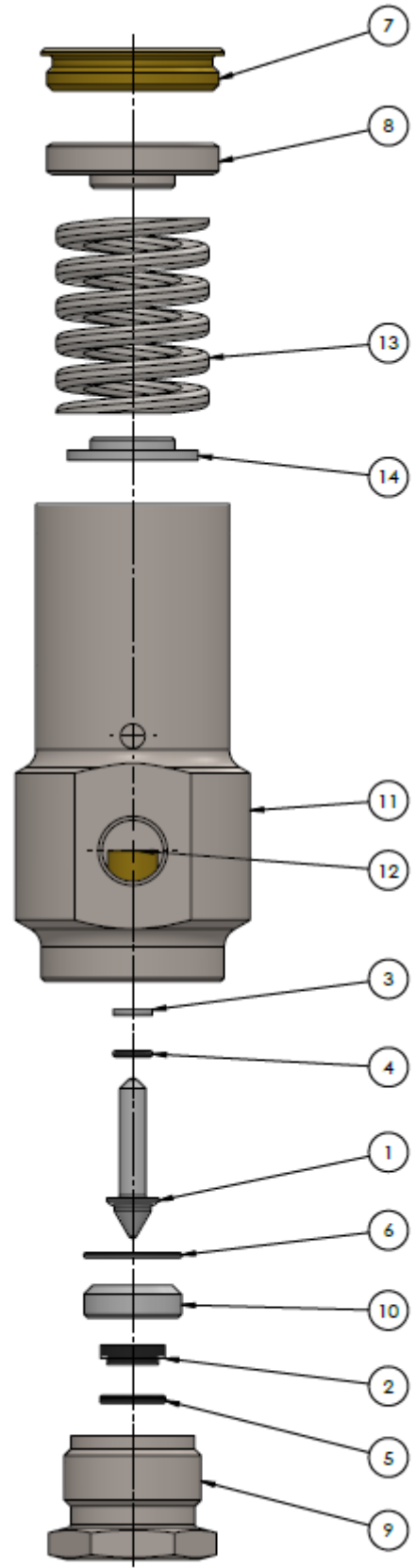
NOTE: Item 12 is bonded to the valve body and cannot be removed

REASSEMBLY

1. Replace the Anti-Extrusion Ring (3), O-Ring (4) and Valve (1). A light application of a suitable lubricant will aid assembly and is vital for correct valve function. Check the inner bore of the Valve Guide Insert (12) for cleanliness then push the Valve (1) complete with Anti-Extrusion Ring (3) and O-Ring (4) into the Valve Guide Insert (12).
2. Re-assemble the Valve Seat (2), Valve Housing (10) and Seals (5,6) into the Inlet Connector (9).
3. Re-assemble the Inlet Connector assembly into the Body (11) and torque to 130 - 140 Nm.
4. If possible reset the valve operating pressure before refitting the valve to the system, and check for correct function and leakage. Adjust the set pressure of the valve by screwing the Adjuster (8) in to increase pressure setting and out to decrease pressure setting.
5. When valve is reset and there are no leaks from the valve, refit the Cap (7).

NOTE: Ensure lubricants are compatible with the system medium.

H15 & H15SS EXPLODED VIEW



RECOMMENDED SPARES KIT

H15 & H15SS STANDARD BACK PRESSURE MAINTAINING VALVE

ITEM	DESCRIPTION	QUANTITY
1	Valve	1
2	Valve Seat	1
3	Anti-Extrusion Ring	1
4	O-Ring	1
5	O-Ring	1
6	O-Ring	1