

# DATASHEET

## BACK PRESSURE MAINTAINING VALVE (BPMV): H120 AND H121

MODEL CODE						
H120 -	1	1	AA	150P	N	0

MODEL TYPE	
H120	DOMES LOADED INTERNALLY
H121	DOMES LOADED EXTERNALLY

MAXIMUM INLET PRESSURE	
1	1,000 Psi (70 Bar)*
2	1,000 Psi (70 Bar)**

SET PRESSURE RANGE	
1	0.75 ~ 1,000 Psi (0.05 ~ 70 Bar)

MATERIAL	
AA	ALUMINIUM ALLOY
SS	STAINLESS STEEL
AB	ALUMINIUM BRONZE
BR	BRASS

\* PRESSURE RANGE 1 - THE VALVE IS DESIGNED FOR USE AT A MAXIMUM INLET PRESSURE OF 70 Bar BUT IS **NOT CE MARKED**. WHEN USED IN THE UK AND EU THE MAXIMUM INLET PRESSURE IS DEPENDENT ON THE FLUID GROUP AS DEFINED BY THE PRESSURE EQUIPMENT DIRECTIVE AS FOLLOWS:  
 GROUP 1 LIQUIDS - 52 Bar  
 GROUP 2 LIQUIDS - 70 Bar  
 GROUP 1 GASES - NOT SUITABLE  
 GROUP 2 GASES - 26 Bar

\*\* PRESSURE RANGE 2 - THE VALVE IS CE MARKED AND IS SUITABLE FOR USE AT A MAXIMUM INLET PRESSURE OF 70 Bar IN THE UK AND EU WITH ALL FLUID GROUPS. THIS PRESSURE RANGE IS ONLY AVAILABLE IN STAINLESS STEEL.

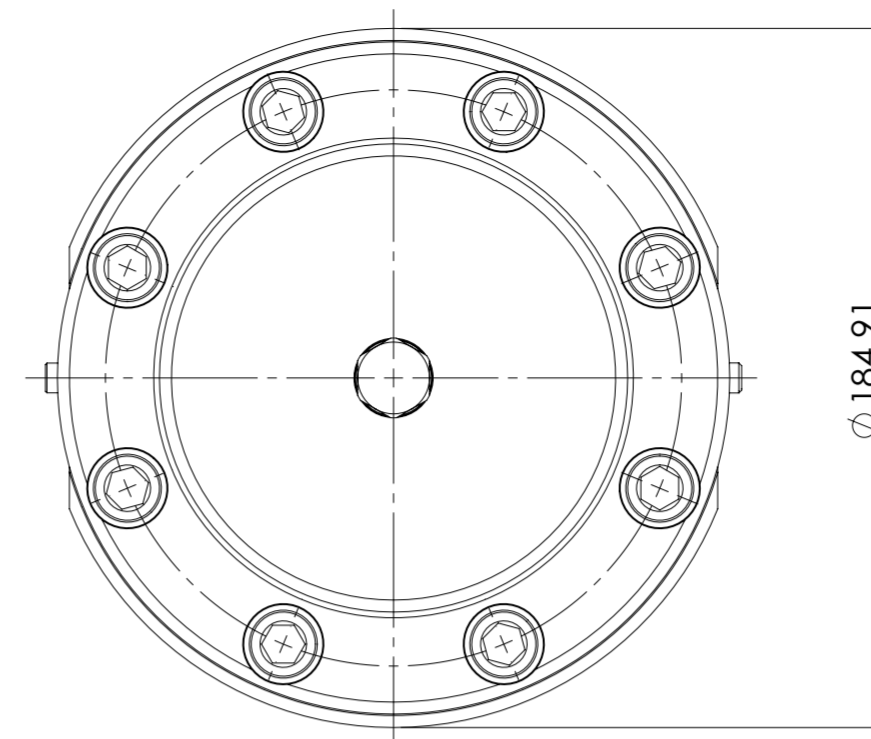
GAUGE PORT	
0	NO PORT
GB	1/4" BSPP INLET & OUTLET

SEALS	
N	NITRILE
V	VITON

PORTING	
150P	1 1/2" BSPP
150N	1 1/2" NPT

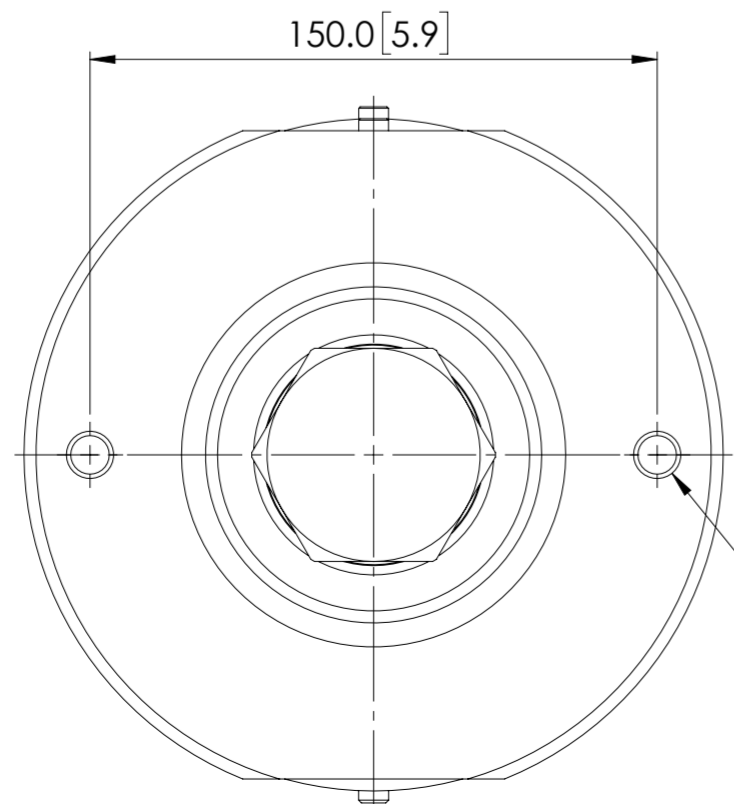
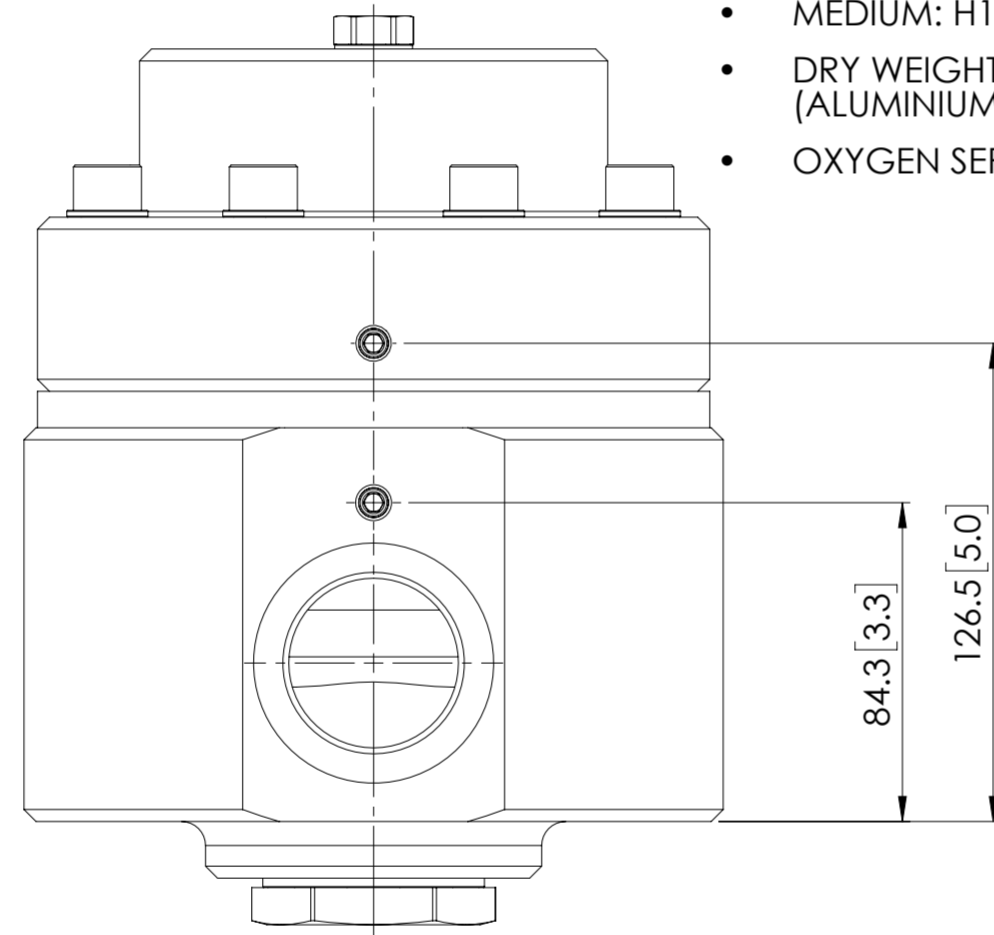
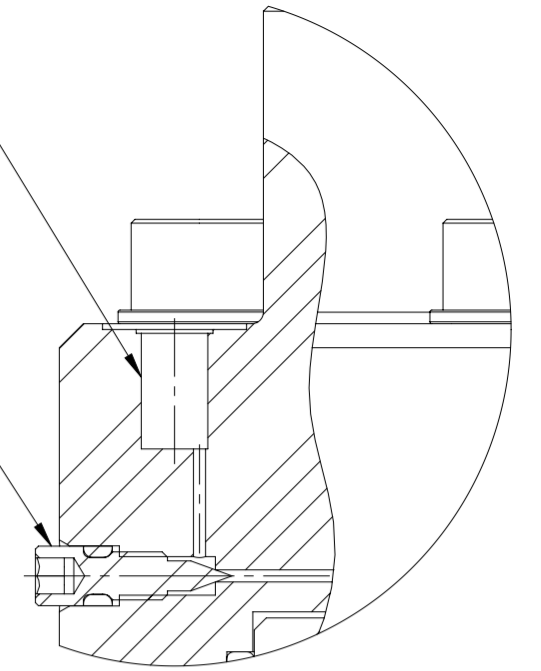
### SPECIFICATION

- ORIFICE: 25.4mm (1")
- MEDIUM: H120 - GAS ONLY
- MEDIUM: H121 - GAS AND LIQUID
- DRY WEIGHT: 14.0 kg (31 lb) (ALUMINIUM ALLOY)
- OXYGEN SERVICE AVAILABLE

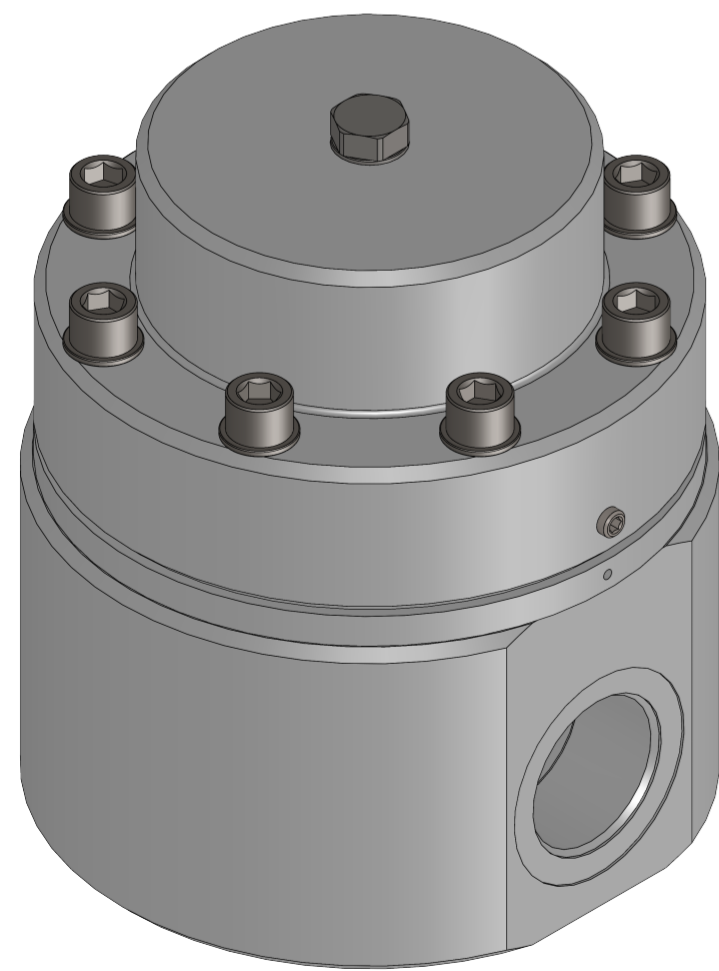
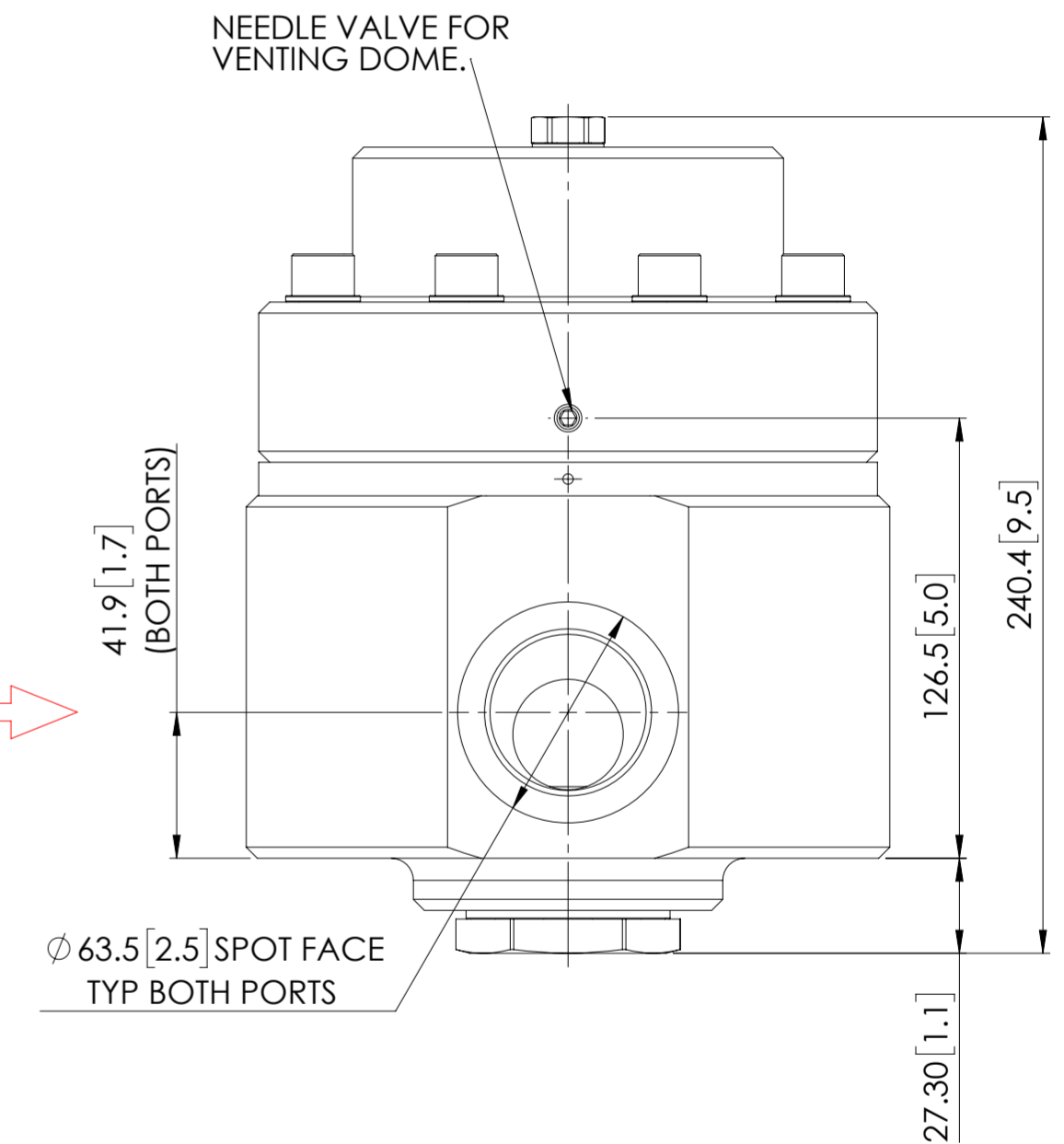
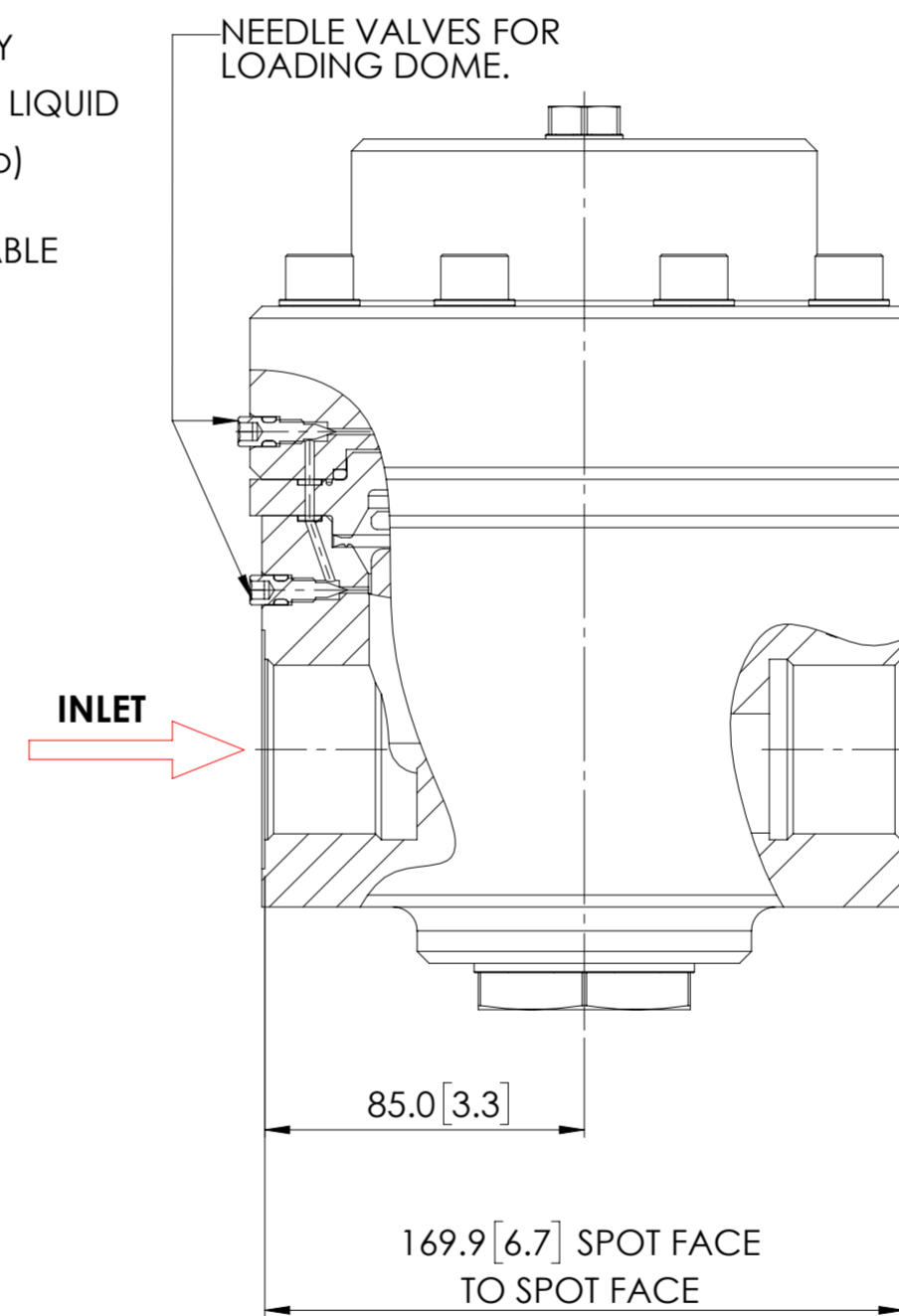


H121 VALVES ONLY.  
1/8" BSPP EXTERNAL DOME  
LOADING PORT LOCATION.

H121 VALVES ONLY.  
NEEDLE VALVE FOR  
EXTERNAL DOME LOADING.



2 OFF MOUNTING HOLES  
M12 x 15mm (0.60") FULL THREAD



© AND DESIGN RIGHT BIS WELLS LTD. ALL RIGHTS RESERVED. WITHOUT THE PRIOR WRITTEN PERMISSION OF BIS WELLS LTD NO PART OF THIS DOCUMENT MAY BE ALTERED, ADAPTED, PUBLISHED, REPRODUCED OR TRANSMITTED IN ANY FORM OR MEDIUM.				UNLESS OTHERWISE SPECIFIED DIMENSIONS ARE METRIC 1. LINEAR TOLERANCES : ±0.1mm 2. ANGULAR TOLERANCES : ± 2°			
DRAWN	J.PHELAN	SHEET	1 OF 1	DRAWING SIZE	A2	DRAWING SCALE	1:2
DATE	03/05/19	ISSUE	3	3RD ANGLE PROJECTION			
						DRAWING NUMBER	DS0011