

DATASHEET

PRESSURE REGULATOR: A130 AND A131

MODEL CODE						
A130 -	1	1	AA	300P	N	0

MODEL TYPE	
A130 -	DOME LOADED INTERNALLY
A131 -	DOME LOADED EXTERNALLY

MAXIMUM INLET PRESSURE	
1	70 Bar (1,000 psi)*
2	70 Bar (1,000 psi)**

SET PRESSURE RANGE	
1	0.7 - 62 Bar (10 - 900 psi)

MATERIAL	
AA	ALUMINIUM ALLOY
SS	STAINLESS STEEL
AB	ALUMINIUM BRONZE
BR	BRASS

GAUGE PORT	
0	NO PORT
GB	1/4" BSPP INLET & OUTLET

SEALS	
N	NITRILE
V	VITON

PORTING	
300P	3" BSPP
300N	3" NPT

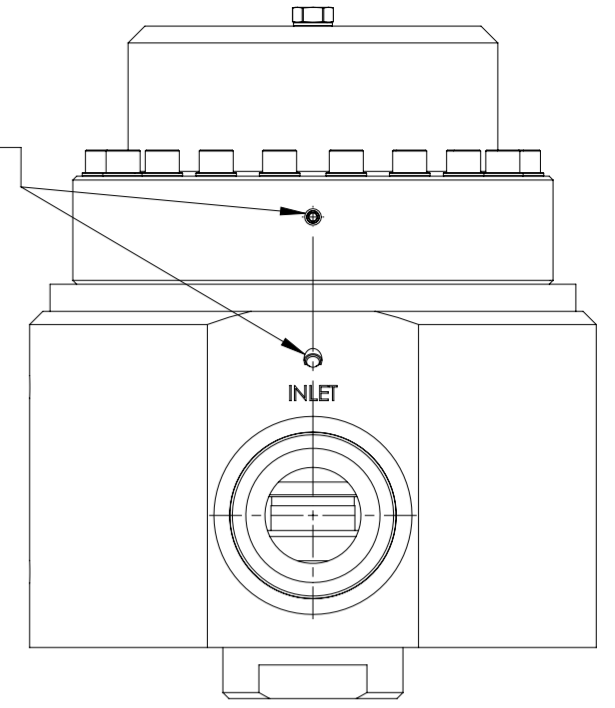
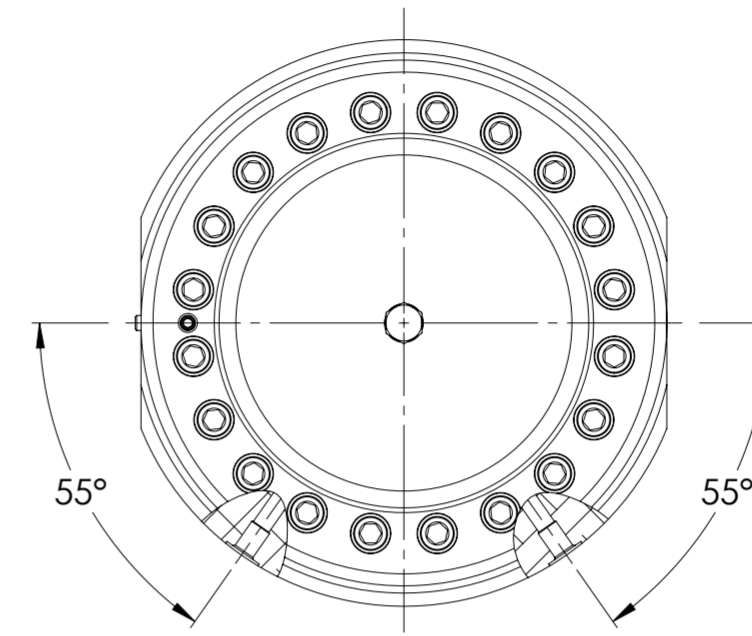
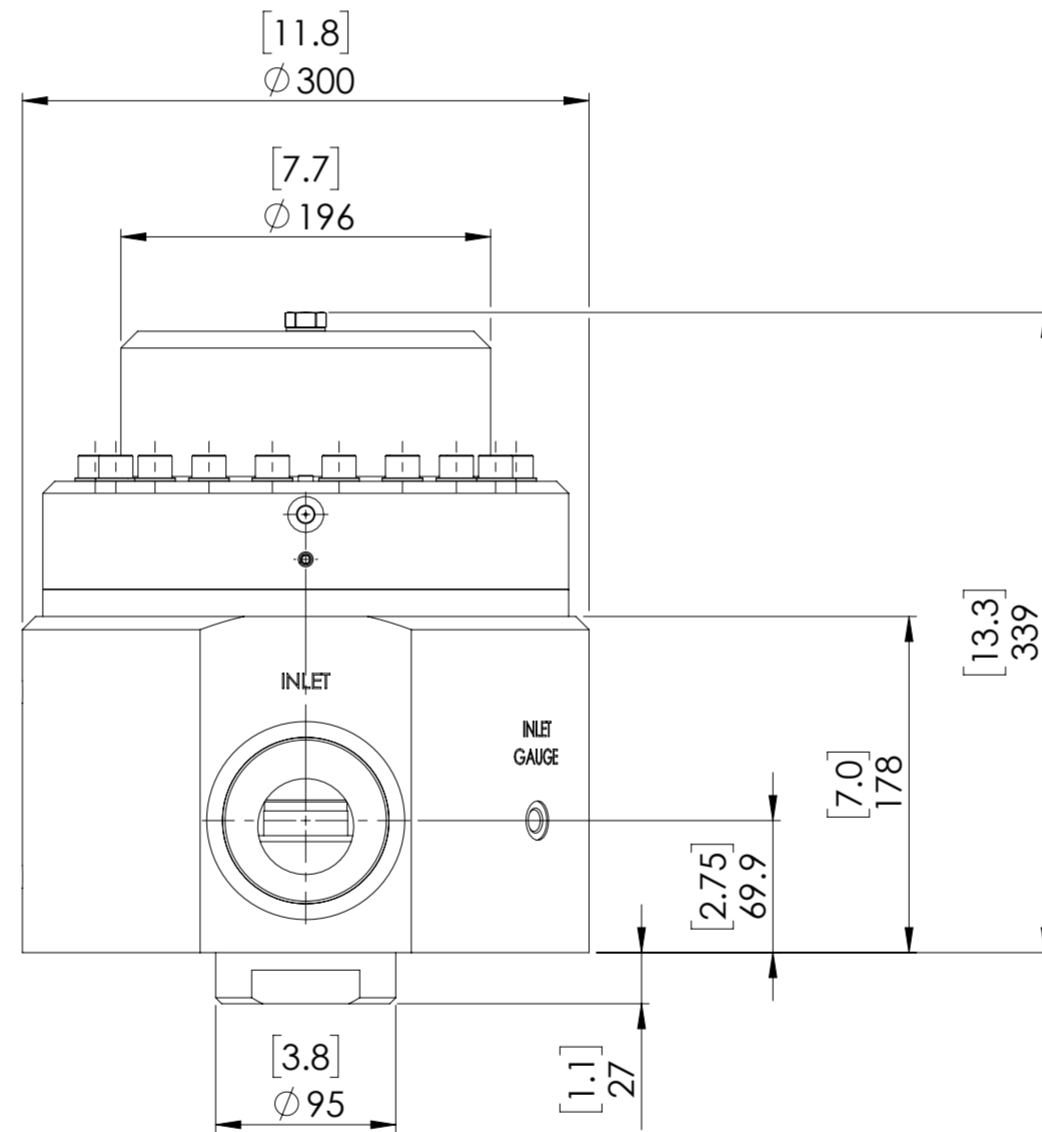
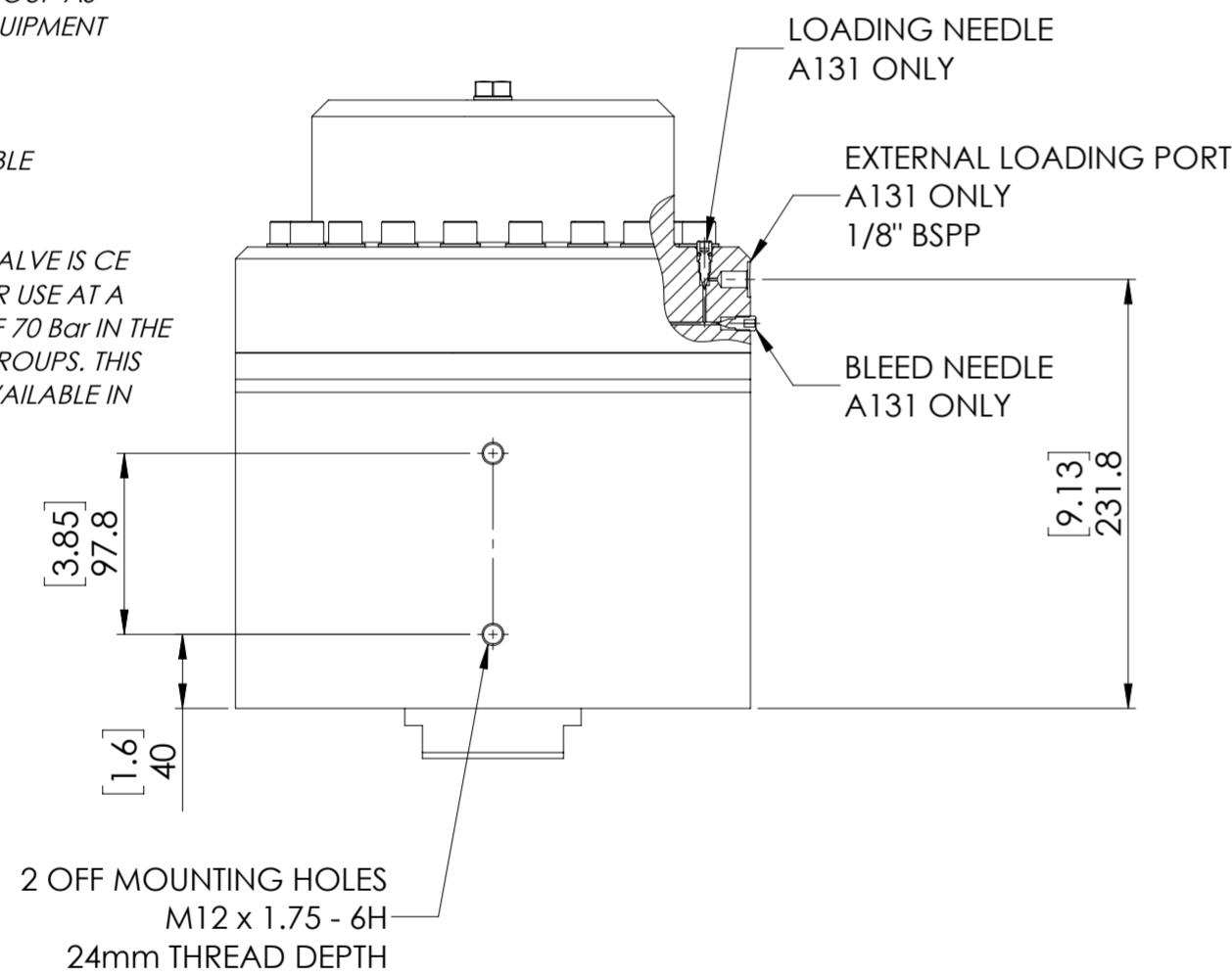
SPECIFICATION

- ORIFICE: 50.8mm
- MEDIUM: A130 - GAS ONLY
- MEDIUM: A131 - GAS AND LIQUID
- CAPACITY VALUE: 30
- DRY WEIGHT: 29 kg (64.0 lb) (ALUMINIUM ALLOY)
- OUTLET RISE / UNIT INLET FALL: 0.026

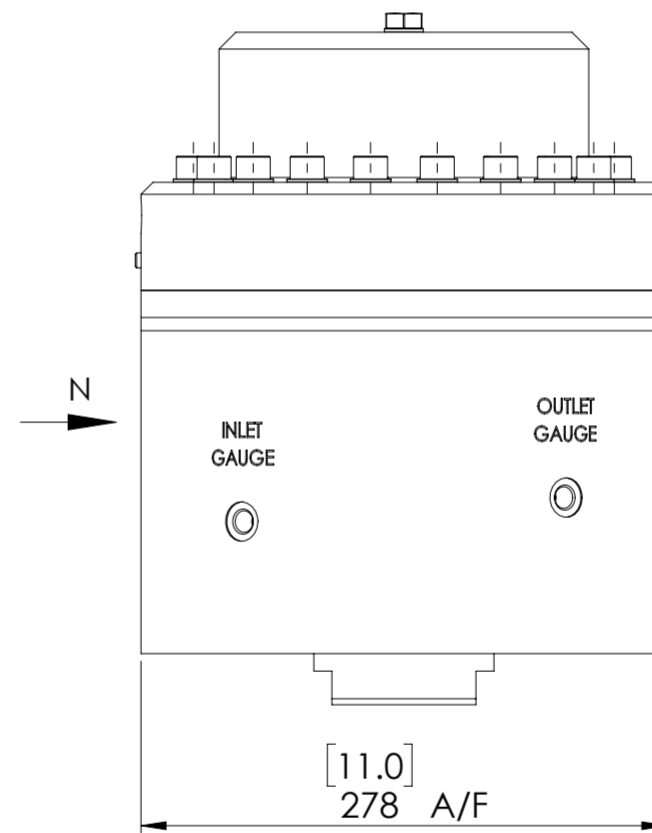
* PRESSURE RANGE 1 - THE VALVE IS DESIGNED FOR USE AT A MAXIMUM INLET PRESSURE OF 70 Bar BUT IS **NOT CE** MARKED. WHEN USED IN THE UK AND EU THE MAXIMUM INLET PRESSURE IS DEPENDENT ON THE FLUID GROUP AS DEFINED BY THE PRESSURE EQUIPMENT DIRECTIVE AS FOLLOWS:

GROUP 1 LIQUIDS - 26 Bar
 GROUP 2 LIQUIDS - 70 Bar
 GROUP 1 GASES - NOT SUITABLE
 GROUP 2 GASES - 13 Bar

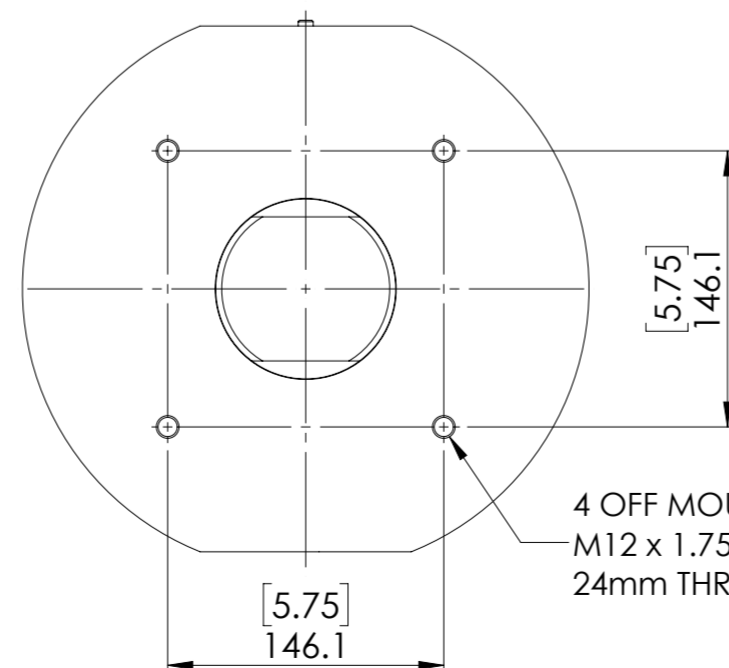
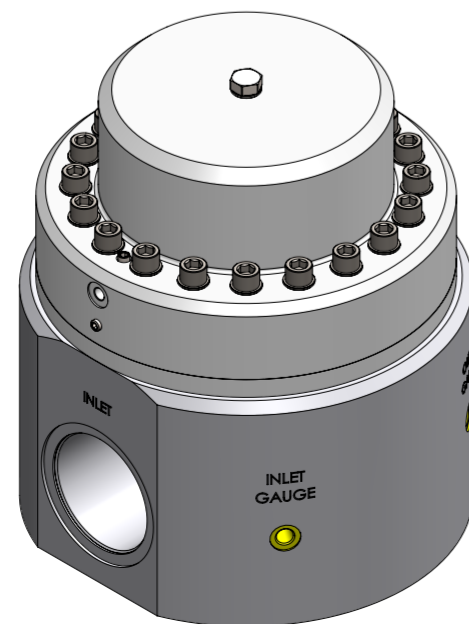
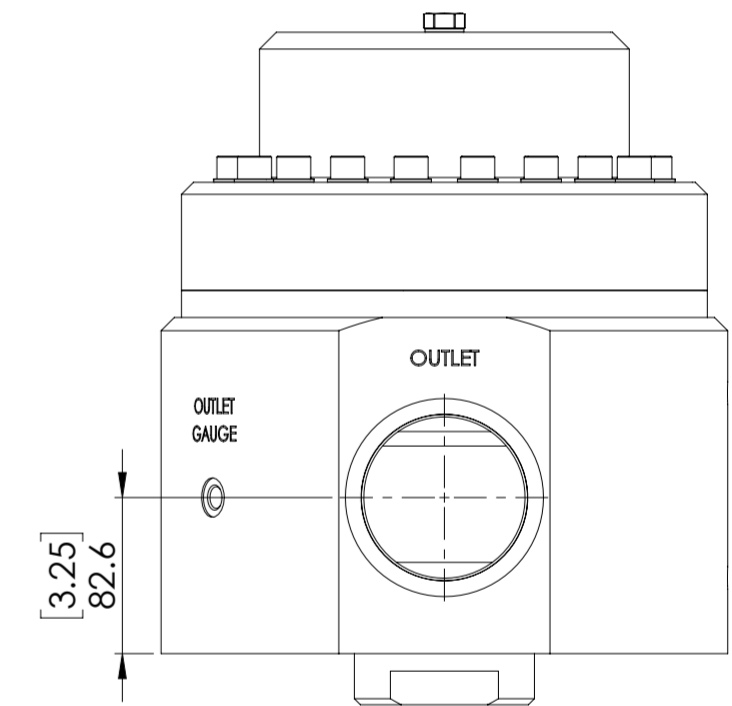
** PRESSURE RANGE 2 - THE VALVE IS CE MARKED AND IS SUITABLE FOR USE AT A MAXIMUM INLET PRESSURE OF 70 Bar IN THE UK AND EU WITH ALL FLUID GROUPS. THIS PRESSURE RANGE IS ONLY AVAILABLE IN STAINLESS STEEL.



VIEW N
(INLET SIDE VIEW OF A130)



OPTIONAL GAUGE PORTS SHOWN



© AND DESIGN RIGHT Bis Wells LTD. ALL RIGHTS RESERVED. WITHOUT THE PRIOR WRITTEN PERMISSION OF Bis Wells Ltd NO PART OF THIS DOCUMENT MAY BE ALTERED, ADAPTED, PUBLISHED, REPRODUCED OR TRANSMITTED IN ANY FORM OR MEDIUM.				UNLESS OTHERWISE SPECIFIED, DIMENSIONS ARE IN MILLIMETRES. ALTERNATE DIMENSIONS IN SQUARE BRACKETS ARE IN INCHES.			
DRAWN	N.DANIEL	SHEET	1 OF 1	DRAWING SIZE	A2	DRAWING SCALE	1:4
DATE	03/12/19	ISSUE	3	PROJECTION	3RD ANGLE	DRAWING NUMBER	DS0022