

DATASHEET

STOP AND FLOW CONTROL VALVES: B10 SERIES

MODEL CODE					
B10-	1	SS	125PF	N	NY

MODEL TYPE	STOP AND FLOW CONTROL VALVE
------------	-----------------------------

MAXIMUM INLET PRESSURE	276 Bar (4,000 Psi)
------------------------	---------------------

MATERIAL	
A	ALUMINIUM
AB	ALUMINIUM BRONZE
BR	BRASS
SS	STAINLESS STEEL

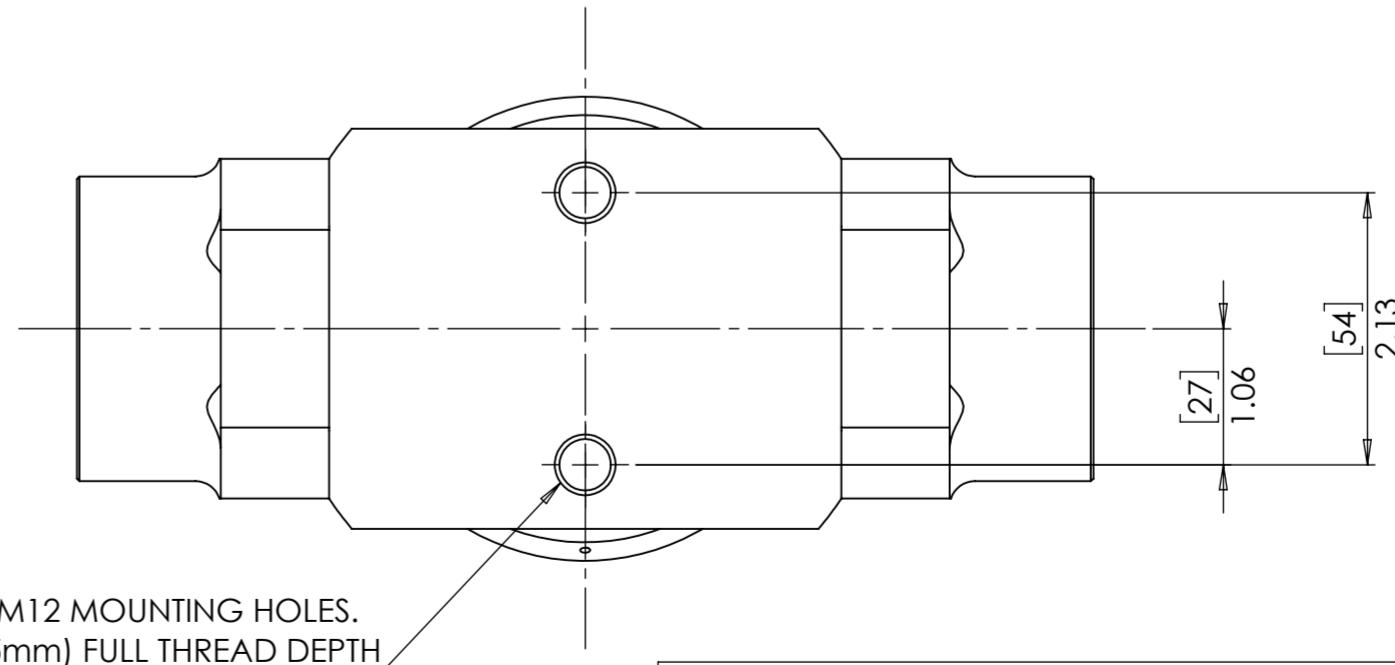
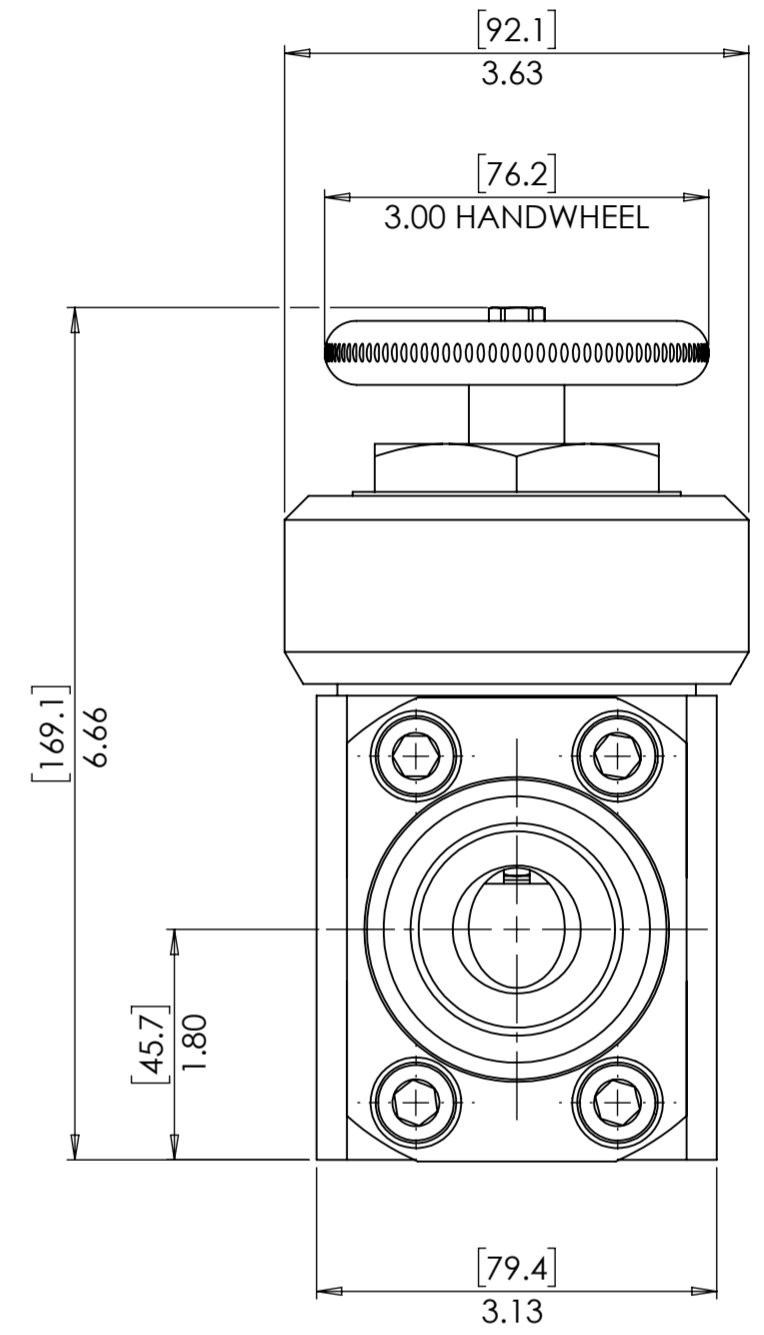
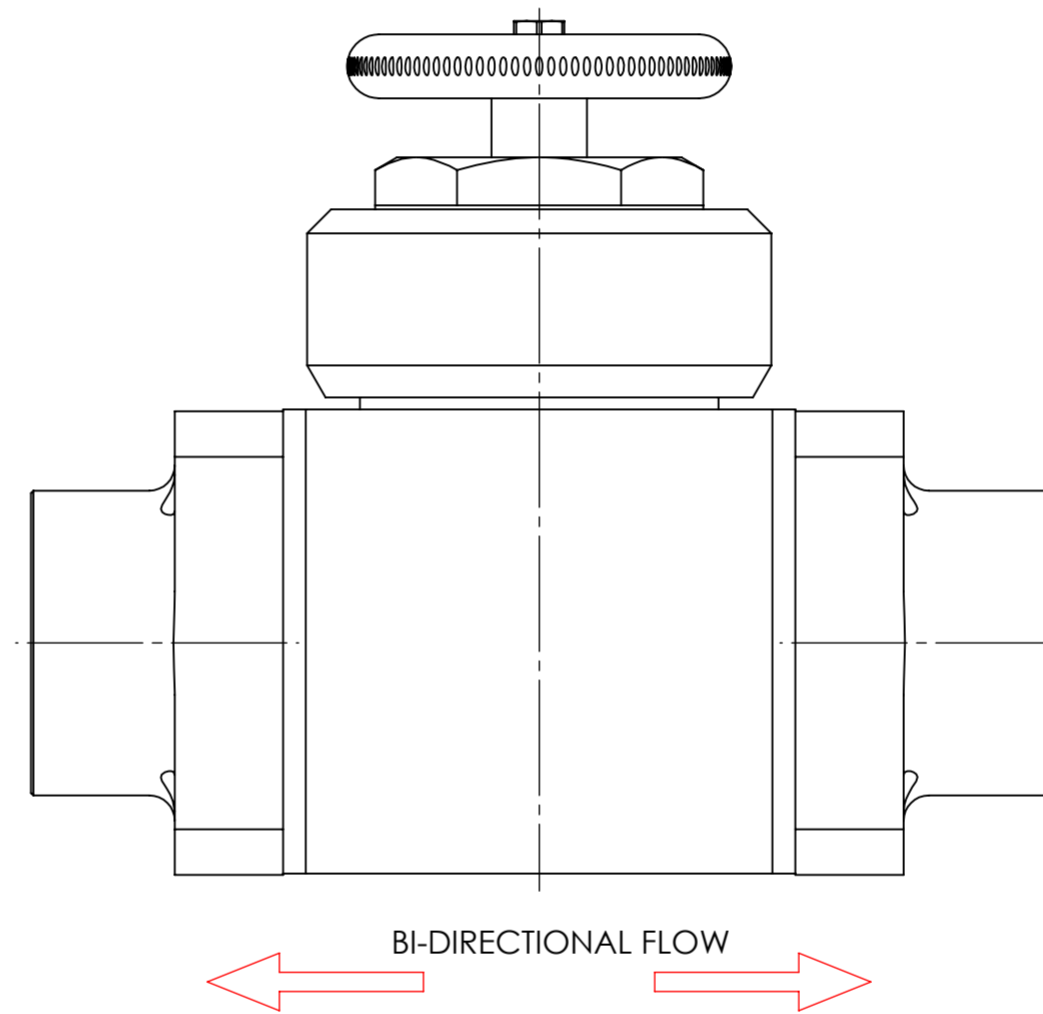
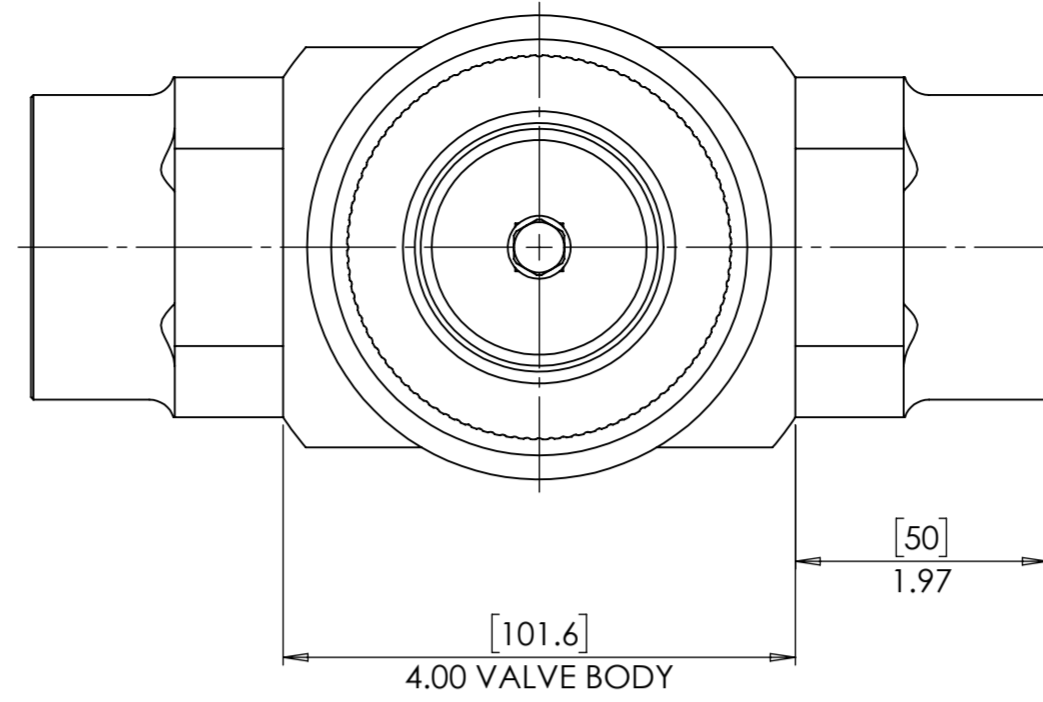
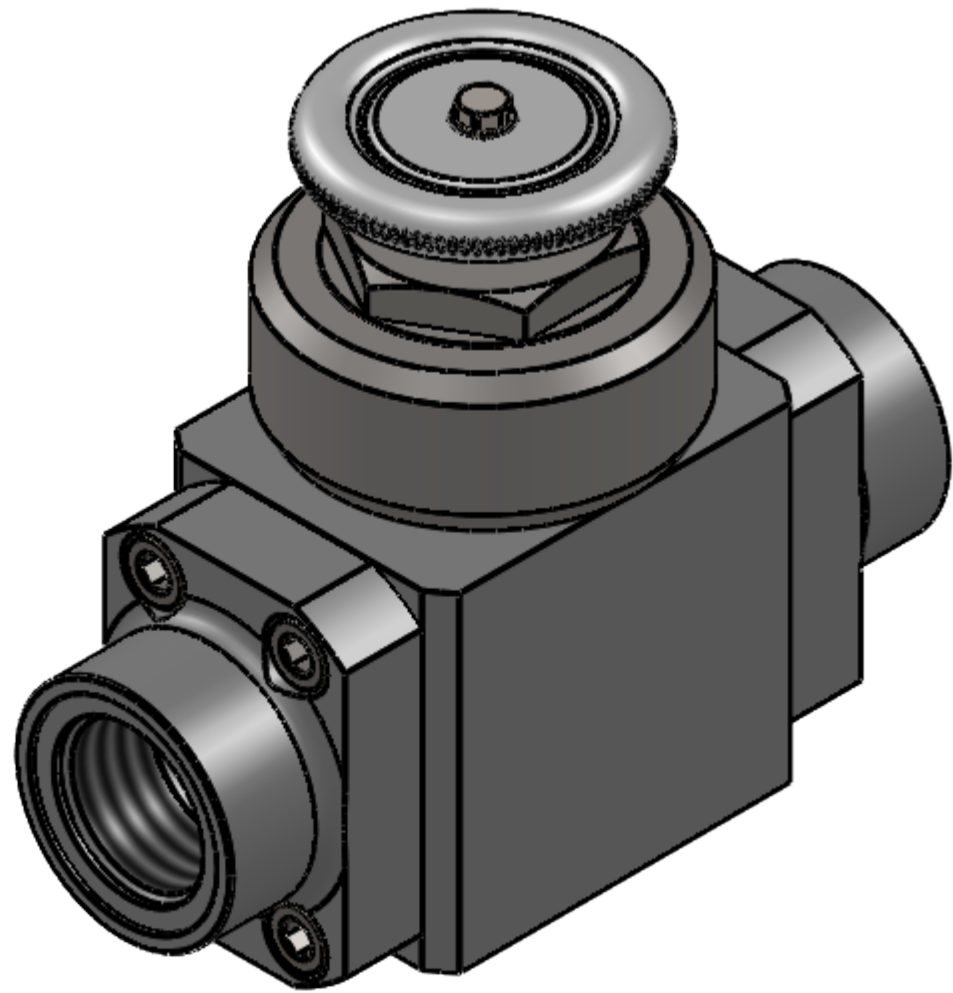
SEAT MATERIAL	
NY	POLYMER
PE	PEEK
PT	PTFE
OTHER MATERIALS AVAILABLE ON REQUEST	

SEAL MATERIAL	
N	NBR
V	FKM
OTHER MATERIALS AVAILABLE ON REQUEST	

PORTS	
100PF	1" BSPP FEMALE
100NF	1" NPT FEMALE
125PF	1-1/4" BSPP FEMALE
125NF	1-1/4" NPT FEMALE
100SCH40	1" SCHEDULE 40 SOCKET. MWP 70 BAR

STANDARD PRODUCT HIGHLIGHTED IN RED

- PARTIALLY BALANCED DESIGN
- NON RISING STEM
- WEIGHT: 9.8Kg (21.7 lbs) [STAINLESS STEEL VERSION]
- ORIFICE DIAMETER: 0.75" (19mm)
- Cv: 10



2 OFF M12 MOUNTING HOLES.
0.6 (15mm) FULL THREAD DEPTH



<p>© AND DESIGN RIGHT Bis Wells LTD. ALL RIGHTS RESERVED. WITHOUT THE PRIOR WRITTEN PERMISSION OF Bis Wells Ltd NO PART OF THIS DOCUMENT MAY BE ALTERED, ADAPTED, PUBLISHED, REPRODUCED OR TRANSMITTED IN ANY FORM OR MEDIUM.</p>				<p>UNLESS OTHERWISE SPECIFIED DIMENSIONS ARE IN INCHES 1. LINEAR TOLERANCES : ±0.1" 2. ANGULAR TOLERANCES : ± 2°</p>					
DRAWN	J.PHELAN	SHEET	1 OF 1	DRAWING SIZE	A2	DRAWING SCALE	1:2	DRAWING NUMBER	DS0076
DATE	04/08/21	ISSUE	2	3RD ANGLE PROJECTION					