

# DATASHEET

## RELIEF VALVES: C10 & C11 SERIES

MODEL CODE						
C11 -	1	1	SS	50P/37P	N	NY

MODEL TYPE	
C10 -	RELIEF VALVE - 9.53mm ORIFICE
C11 -	RELIEF VALVE - 6.35mm ORIFICE

MAXIMUM INLET PRESSURE	
1	C11: 448 Bar (6,500 Psi)
2	C10: 241 Bar (3,500 Psi)

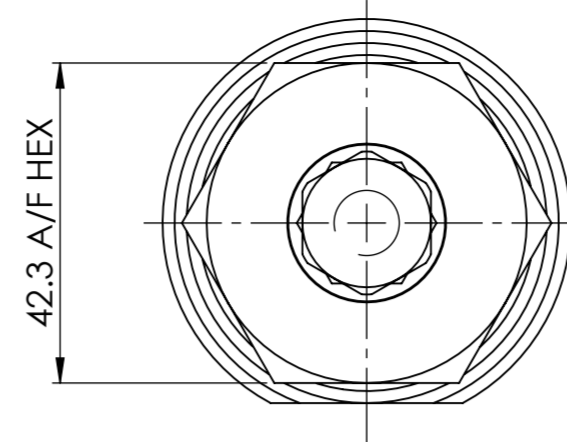
SET PRESSURE RANGE	
1	C11: 69 ~ 448 Bar (1,000 ~ 6,500 Psi)
2	C11: 34 ~ 103 Bar (500 ~ 1,500 Psi)
3	C10: 34 ~ 241 Bar (500 ~ 3,500 Psi)
4	C10: 21 ~ 69 Bar (300 ~ 1,000 Psi)
5	C10: 7 ~ 28 Bar (100 ~ 400 Psi)

MATERIAL	
A	ALUMINIUM
AB	ALUMINIUM BRONZE
BR	BRASS
SS	STAINLESS STEEL

SEAT MATERIAL	
NY	NYLON
PT	PTFE
PE	PEEK

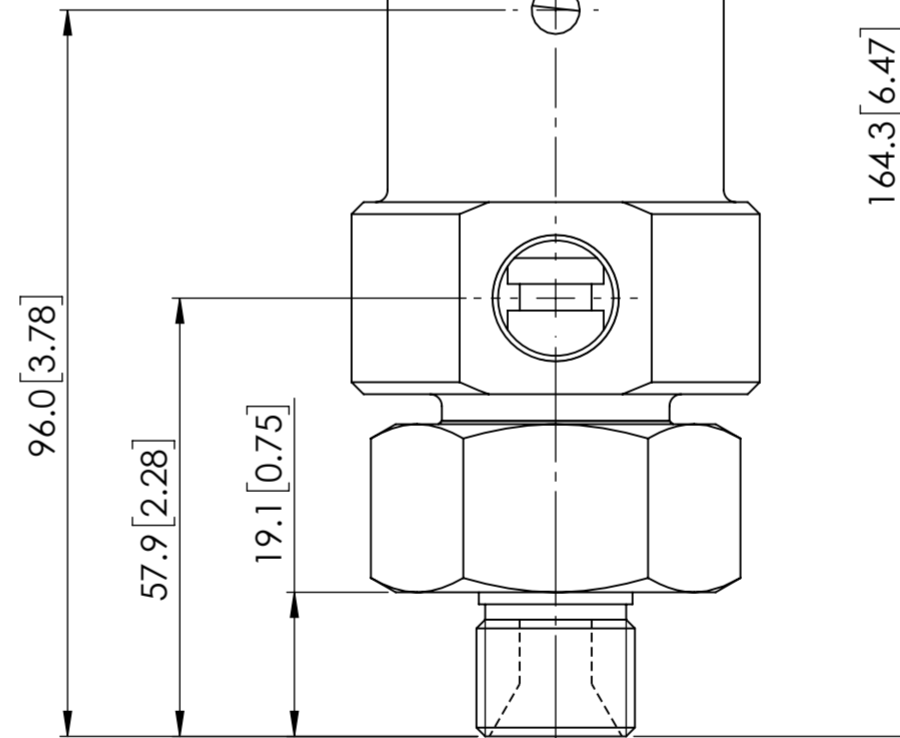
SEAL MATERIAL	
N	NITRILE -25°C TO +120°C
V	VITON -10°C TO +120°C
OTHER SEAL MATERIALS AVAILABLE ON REQUEST	

PORTS	
50P/37P	1/2" BSPP INLET MALE & 3/8" BSPP OUTLET FEMALE

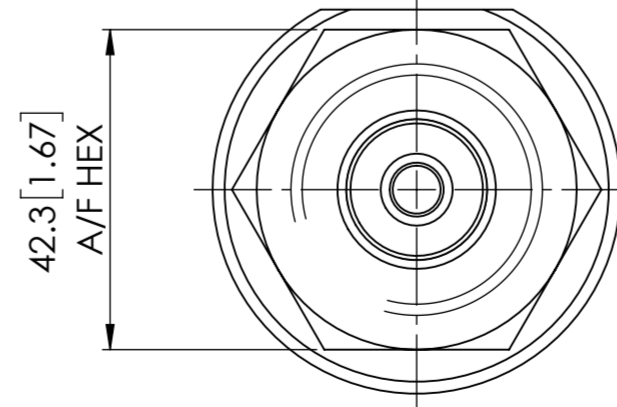


17.0 [0.67]  
A/F HEX

33.8 [1.33] MAX



164.3 [6.47]

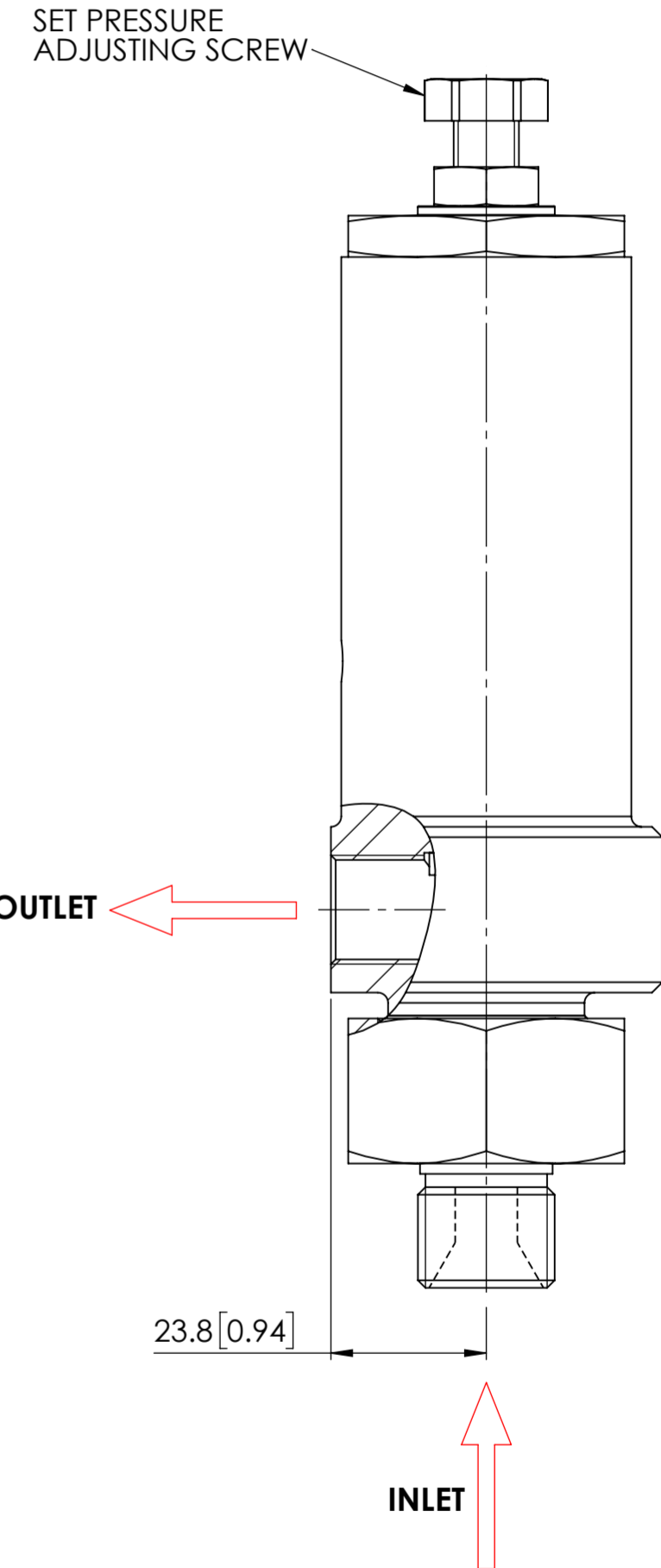
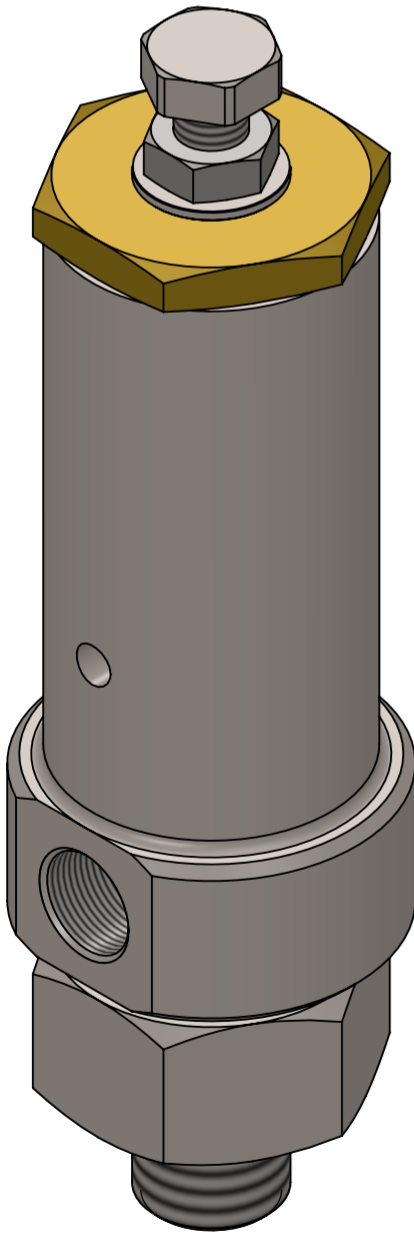
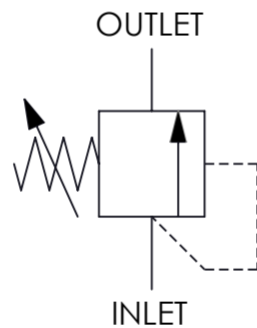


VALVE INFORMATION	
MODEL	C10 & C11
APPROVALS	CATEGORY IV OF PRESSURE EQUIPMENT DIRECTIVE 2014/68/EU *
WEIGHT	1.5KG / (3.3 LB) (STAINLESS STEEL)
MEDIUM	GAS
LEAKTIGHT	WHEN 90% OF SET PRESSURE IS APPLIED
ORIFICE SIZE	C10: 9.53mm, C11: 6.35mm
REPEATABILITY	WITHIN +/-5% OF SET PRESSURE
MAX OUTLET PRESSURE	69 BAR (1000PSI) NOTE: OUTLET PORT PRESSURE AFFECTS SET PRESSURE

\* APPROVAL TO CATEGORY IV OF PRESSURE EQUIPMENT DIRECTIVE 2014/68/EU APPLIES ONLY TO THE STAINLESS STEEL VARIANT.

- FOR OXYGEN AND BREATHING AIR APPLICATIONS USE CODE: **C10OX / C11OX**
- FOR HYDROGEN APPLICATIONS USE CODE: **C10H2 / C11H2**

CIRCUIT SYMBOL



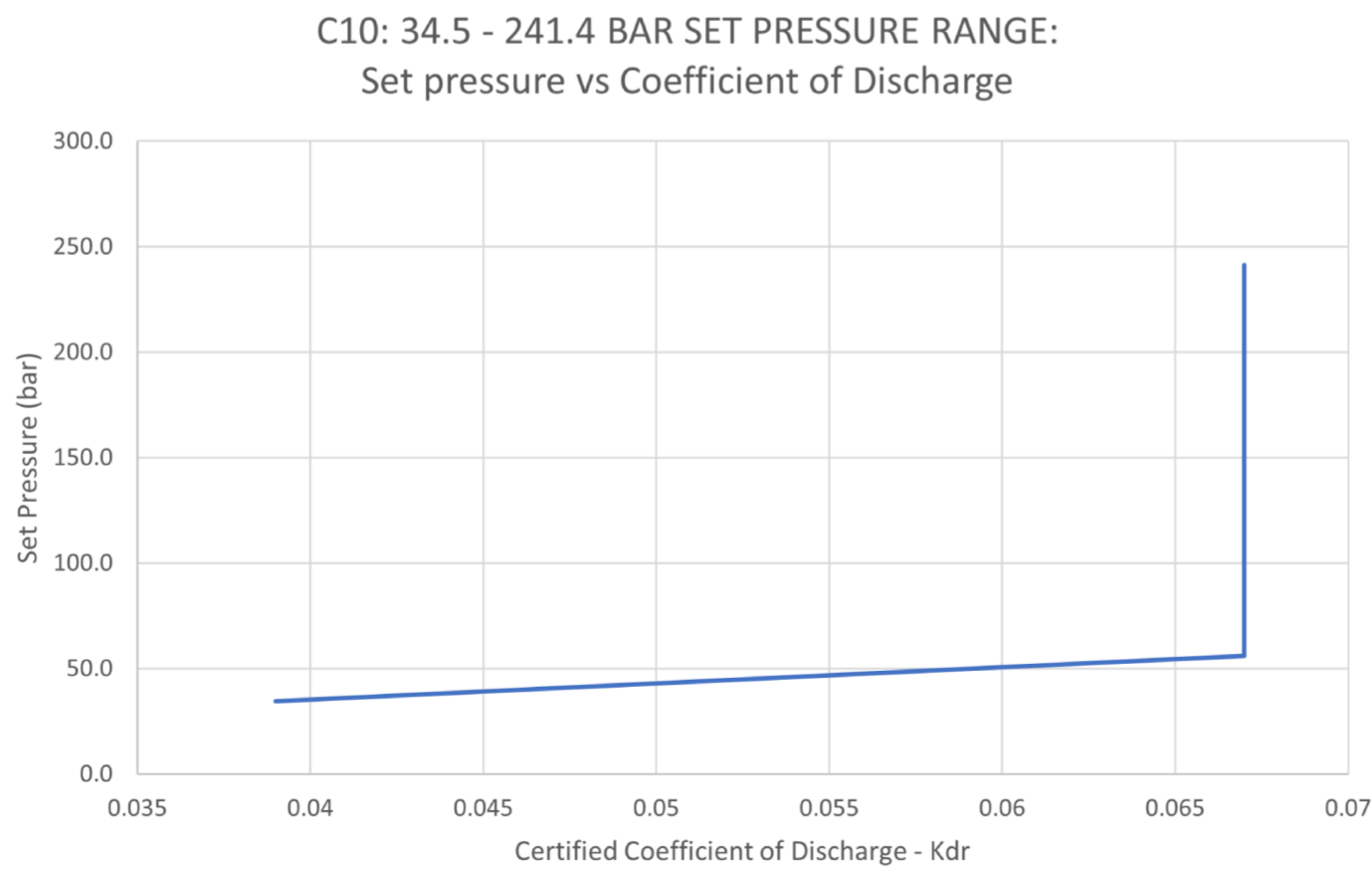
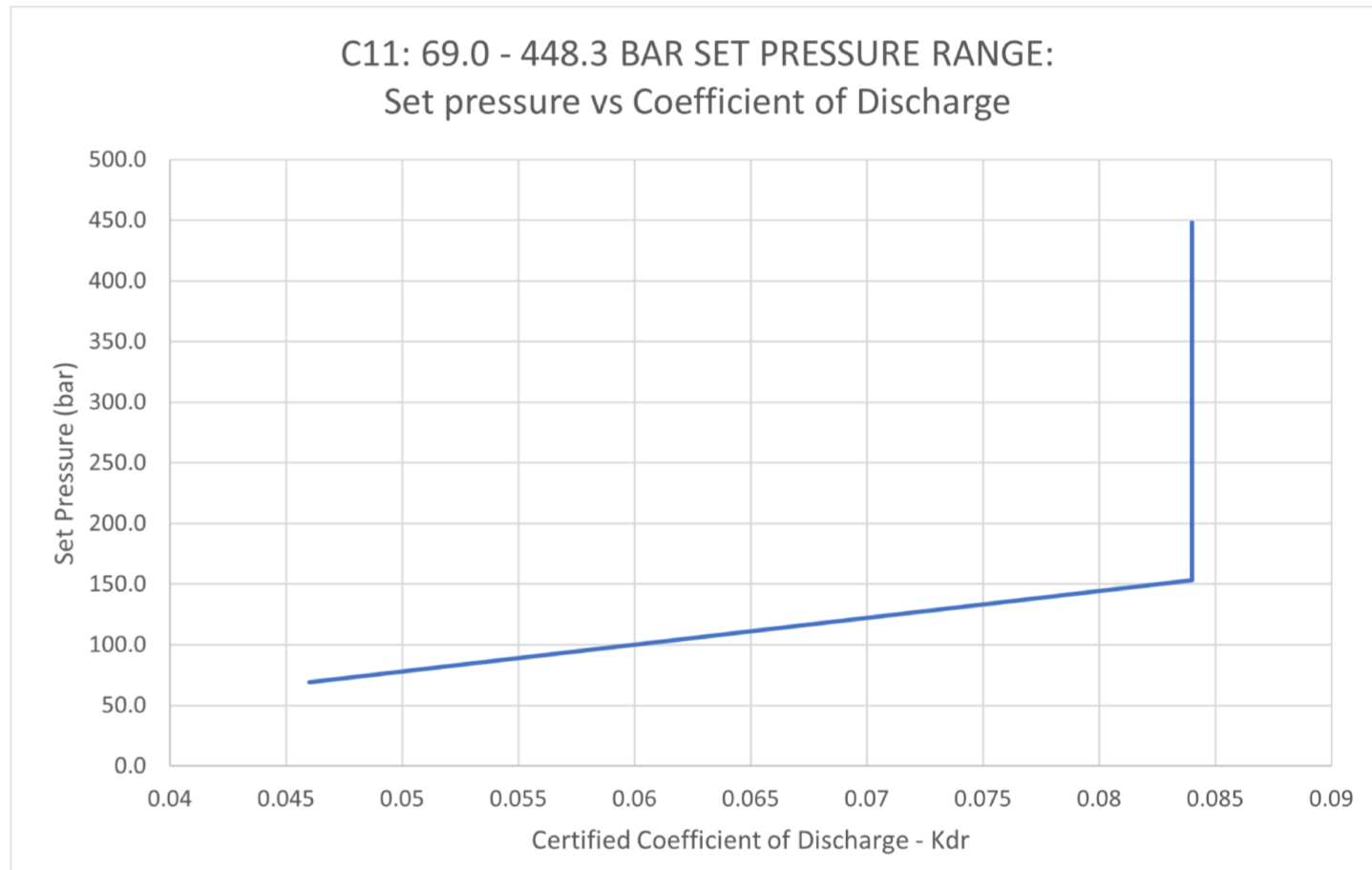
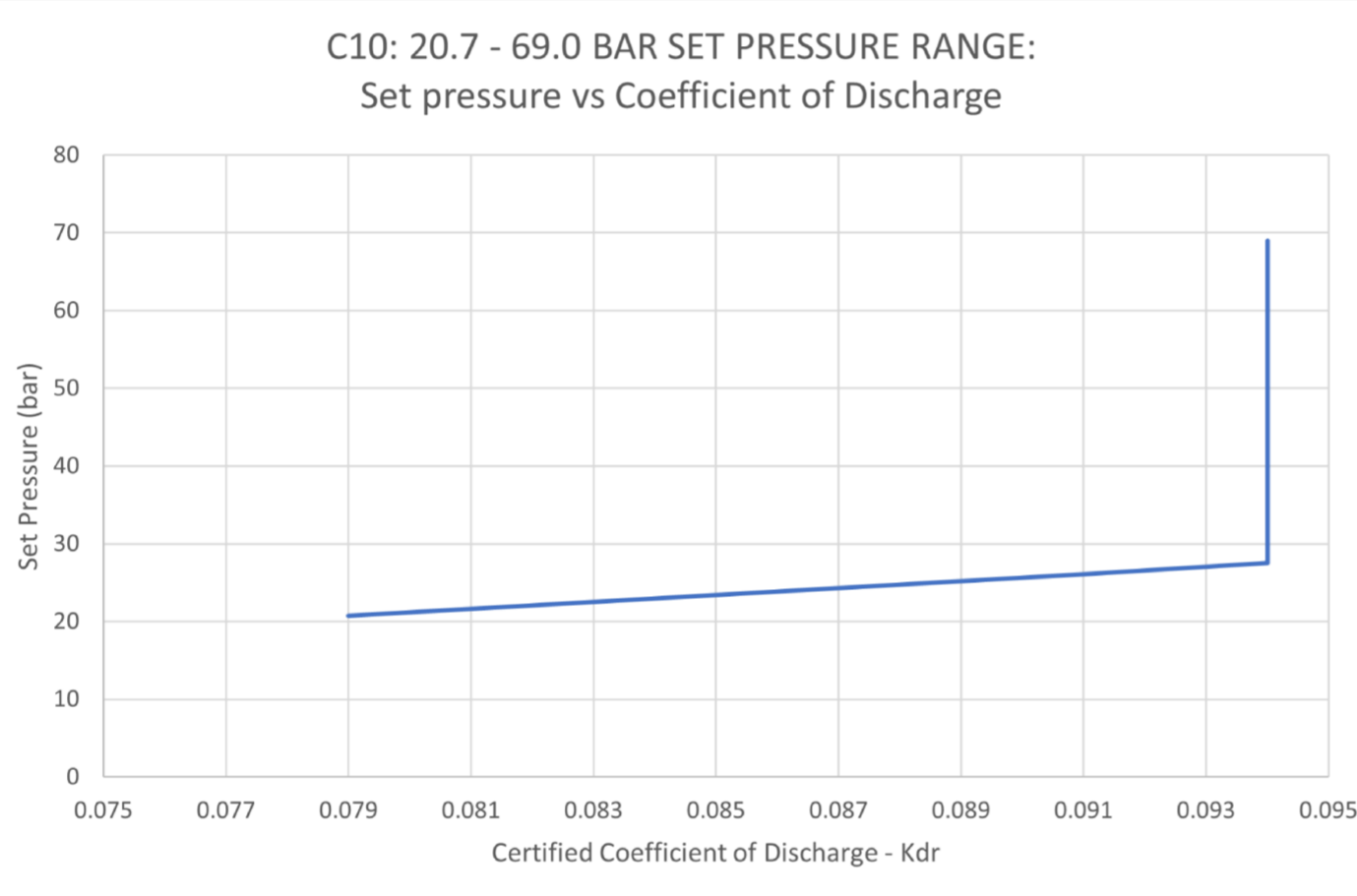
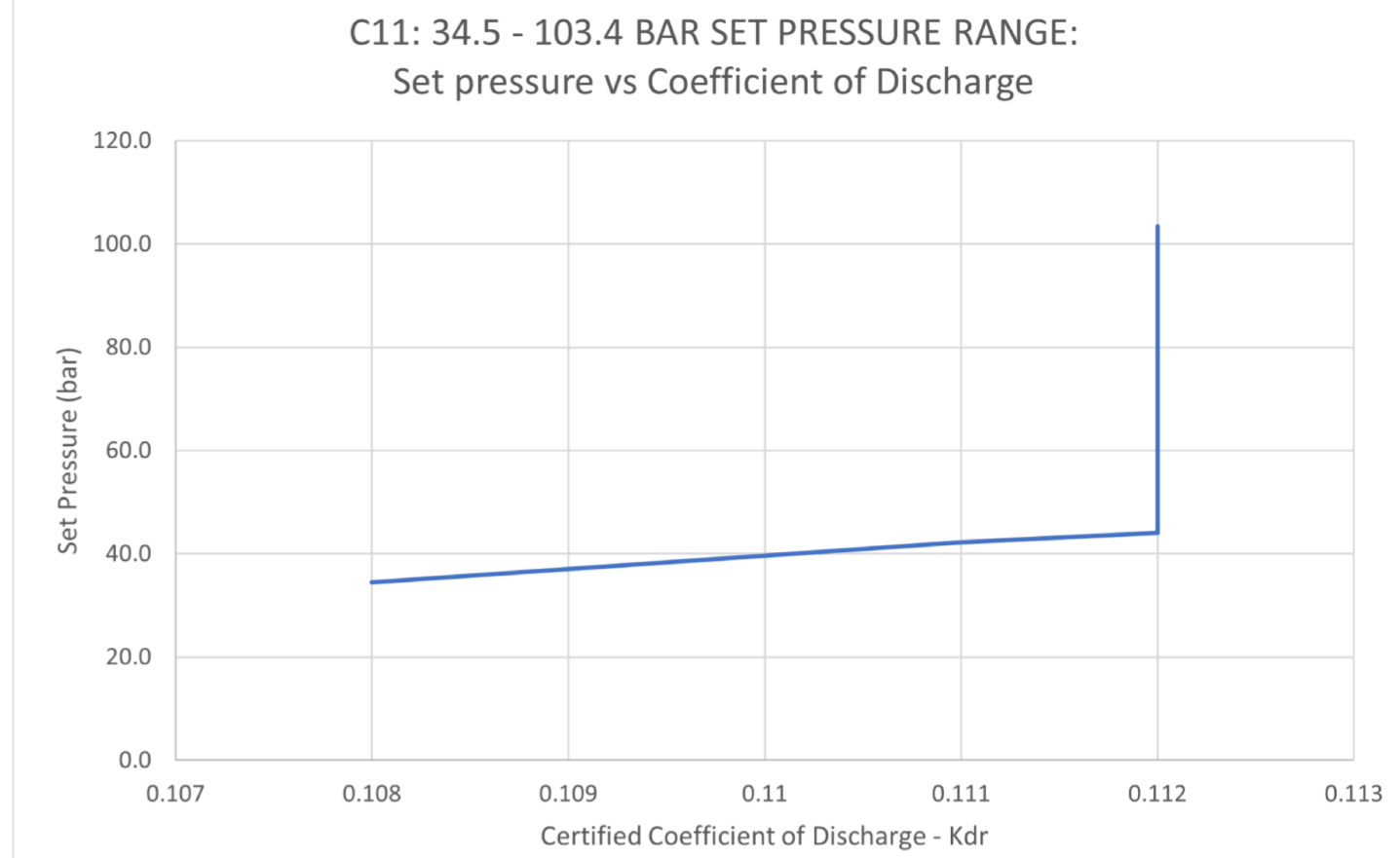
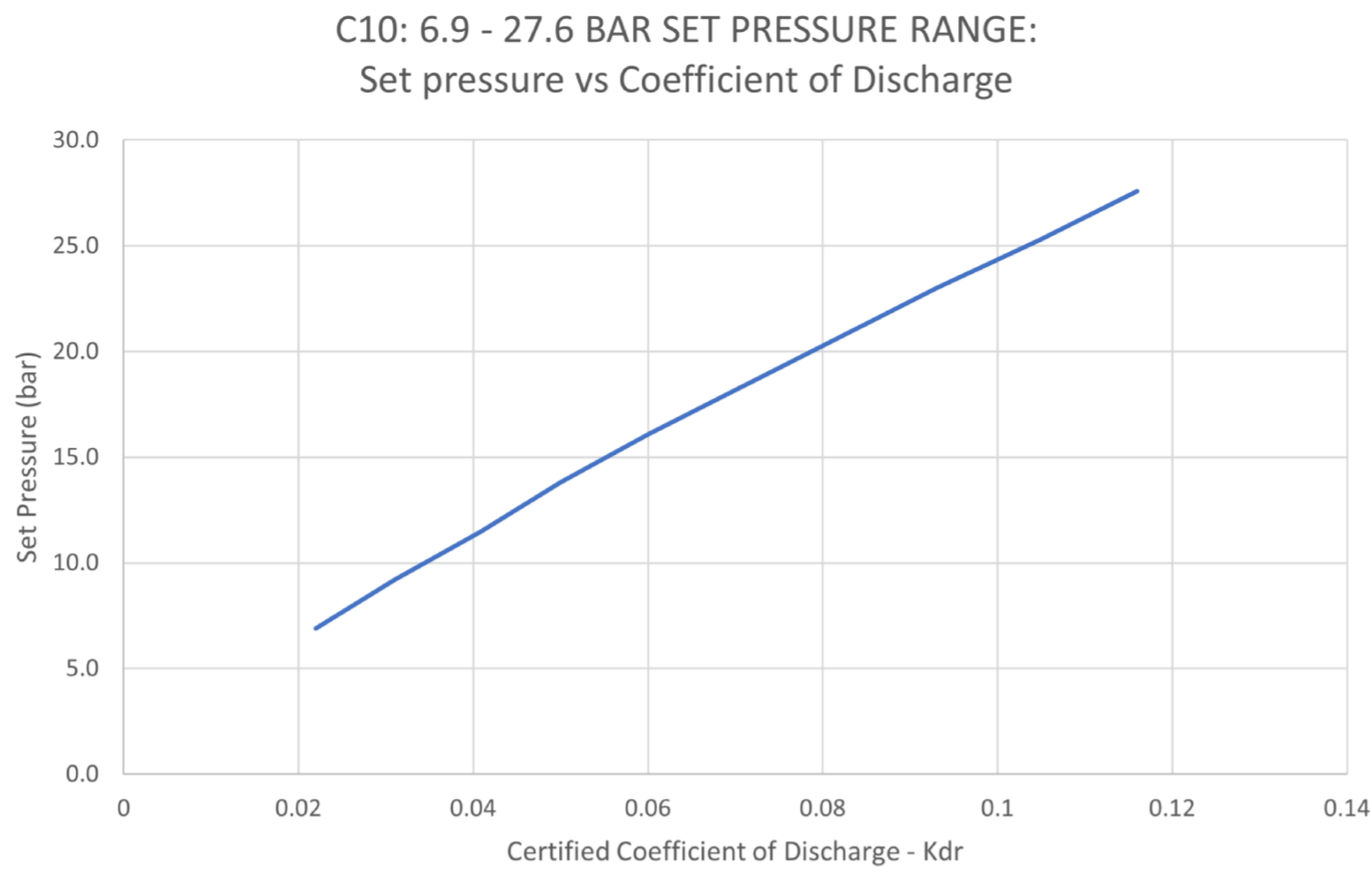
© AND DESIGN RIGHT Bis Wells LTD. ALL RIGHTS RESERVED. WITHOUT THE PRIOR WRITTEN PERMISSION OF Bis Wells Ltd NO PART OF THIS DOCUMENT MAY BE ALTERED, ADAPTED, PUBLISHED, REPRODUCED OR TRANSMITTED IN ANY FORM OR MEDIUM.				UNLESS OTHERWISE SPECIFIED, DIMENSIONS ARE IN MILLIMETRES. ALTERNATIVE DIMENSIONS IN SQUARE BRACKETS ARE IN INCHES.						
DRAWN	J.PHELAN	SHEET	1 OF 2		DRAWING SIZE	A2	DRAWING SCALE	1:2	DRAWING NUMBER	DS0015
DATE	01/09/20	ISSUE	3							

# DATASHEET

## RELIEF VALVES: C10 & C11 SERIES



TEST MEDIUM: AIR



**The Kdr value may be used to calculate discharge capacity in accordance with ISO 4126. We recommend contacting us with system details to confirm suitability.**



© AND DESIGN RIGHT BIS Wells LTD. ALL RIGHTS RESERVED. WITHOUT THE PRIOR WRITTEN PERMISSION OF BIS Wells Ltd NO PART OF THIS DOCUMENT MAY BE ALTERED, ADAPTED, PUBLISHED, REPRODUCED OR TRANSMITTED IN ANY FORM OR MEDIUM.				UNLESS OTHERWISE SPECIFIED, DIMENSIONS ARE IN MILLIMETRES. ALTERNATIVE DIMENSIONS IN SQUARE BRACKETS ARE IN INCHES.						
DRAWN	J.PHELAN	SHEET	2 OF 2	 3RD ANGLE PROJECTION	DRAWING SIZE	A2	DRAWING SCALE	1:2	DRAWING NUMBER	DS0015
DATE	01/09/20	ISSUE	3							