

DATASHEET

PILOT OPERATED STOP VALVE: K39H2 - HYDROGEN SPECIFIC

MODEL CODE						
K39H2 -	1	1	SS	50PF	N	PE

MODEL TYPE	K39H2	2 PORT PILOT OPERATED STOP VALVE, NORMALLY CLOSED
------------	-------	---

MAXIMUM INLET PRESSURE	1	500 bar (7,250 psi)
------------------------	---	---------------------

PILOT PRESSURE RANGE	1	4 - 8 bar (58 - 116 psi)
----------------------	---	--------------------------

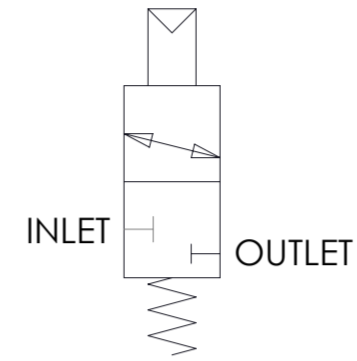
MATERIAL	SS	STAINLESS STEEL
----------	----	-----------------

SEAT MATERIAL	
PE	PEEK
OTHER MATERIALS AVAILABLE ON REQUEST	

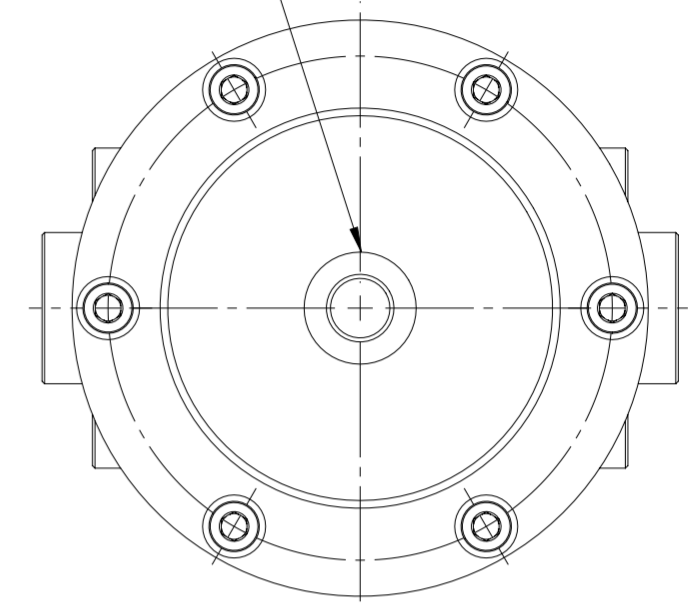
SEALS	
N	NITRILE
V	FKM
H	HNBR
E	EPDM
OTHER MATERIALS AVAILABLE ON REQUEST	

PORTING	
50PF	1/2" BSPP FEMALE
50NF	1/2" NPT FEMALE
50PM	1/2" BSPP MALE
OTHER OPTIONS AVAILABLE ON REQUEST	

VALVE SYMBOL



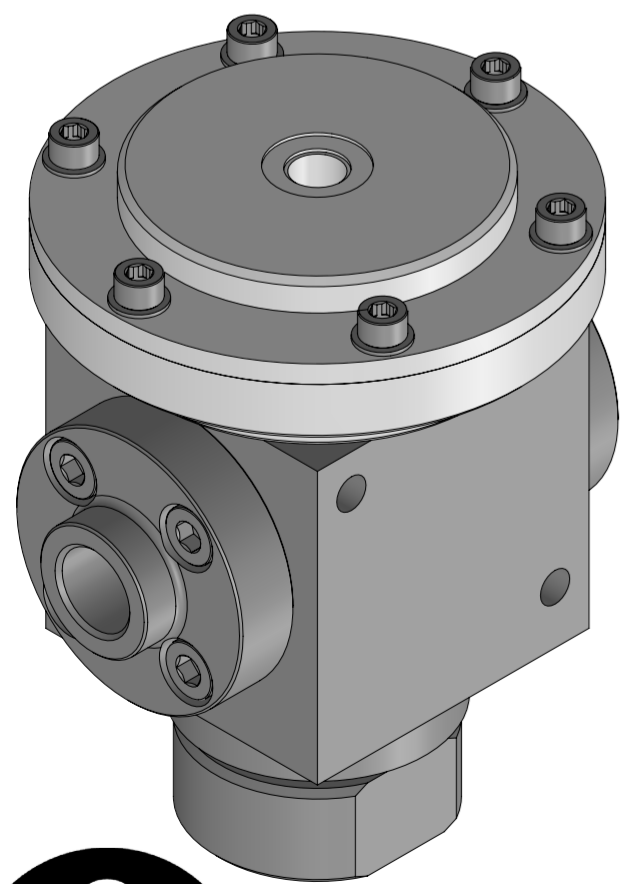
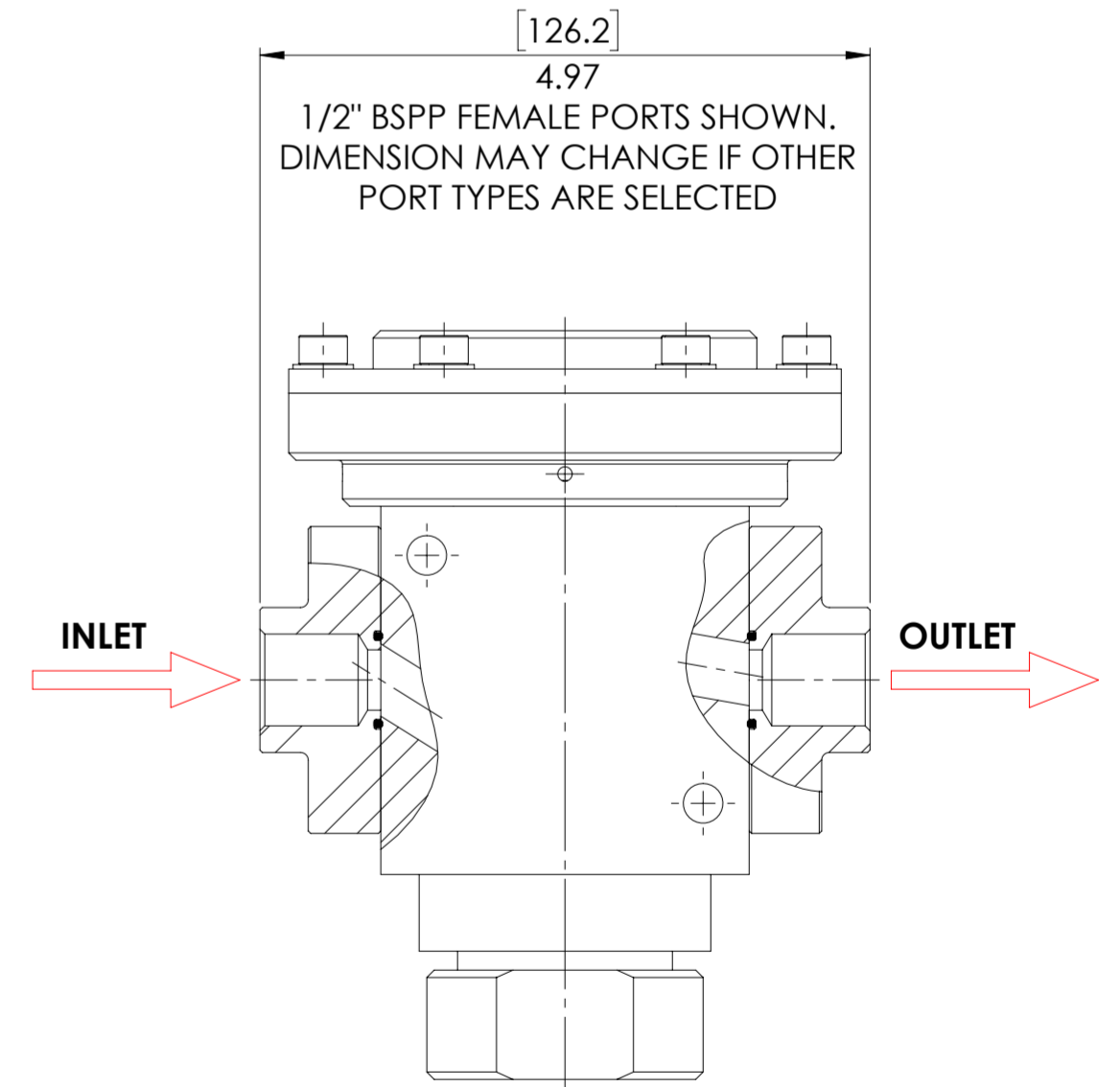
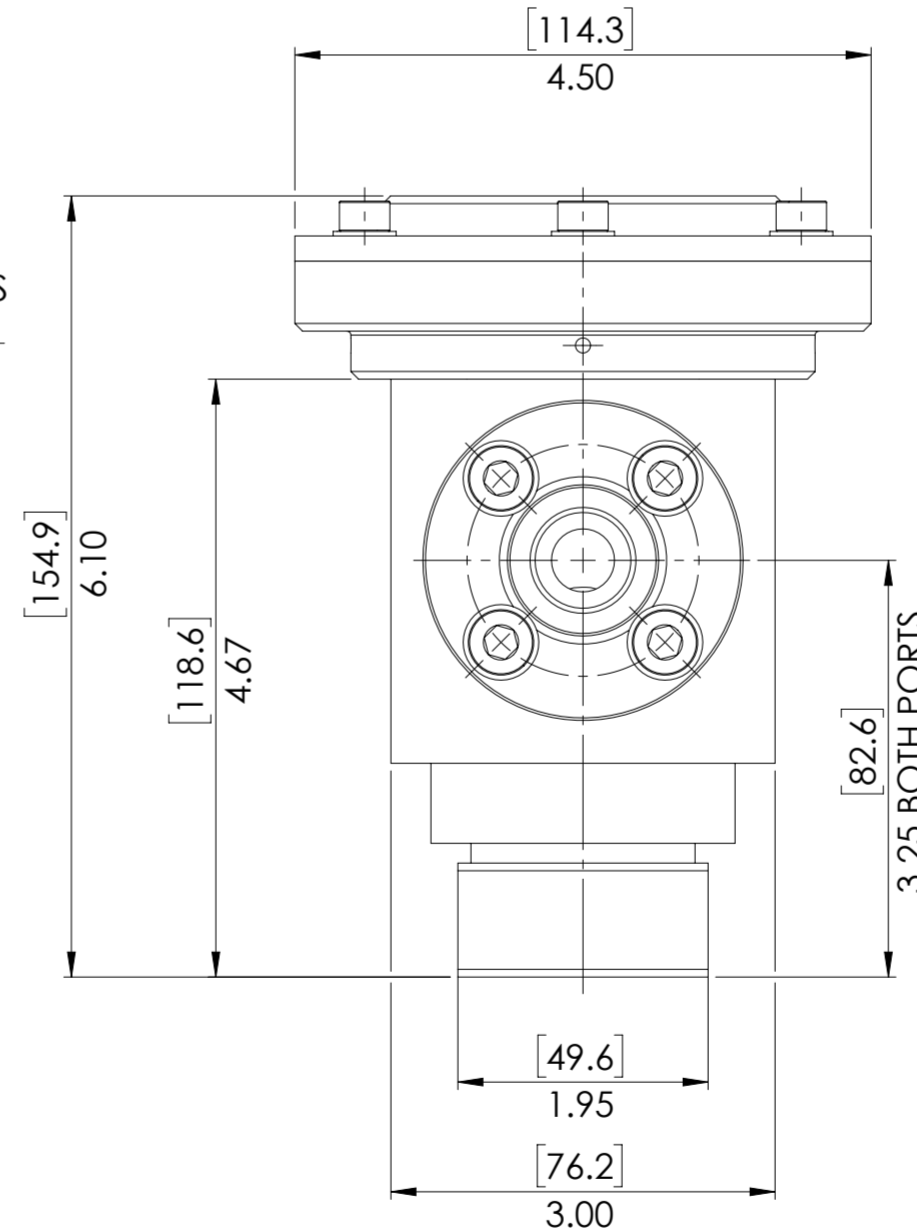
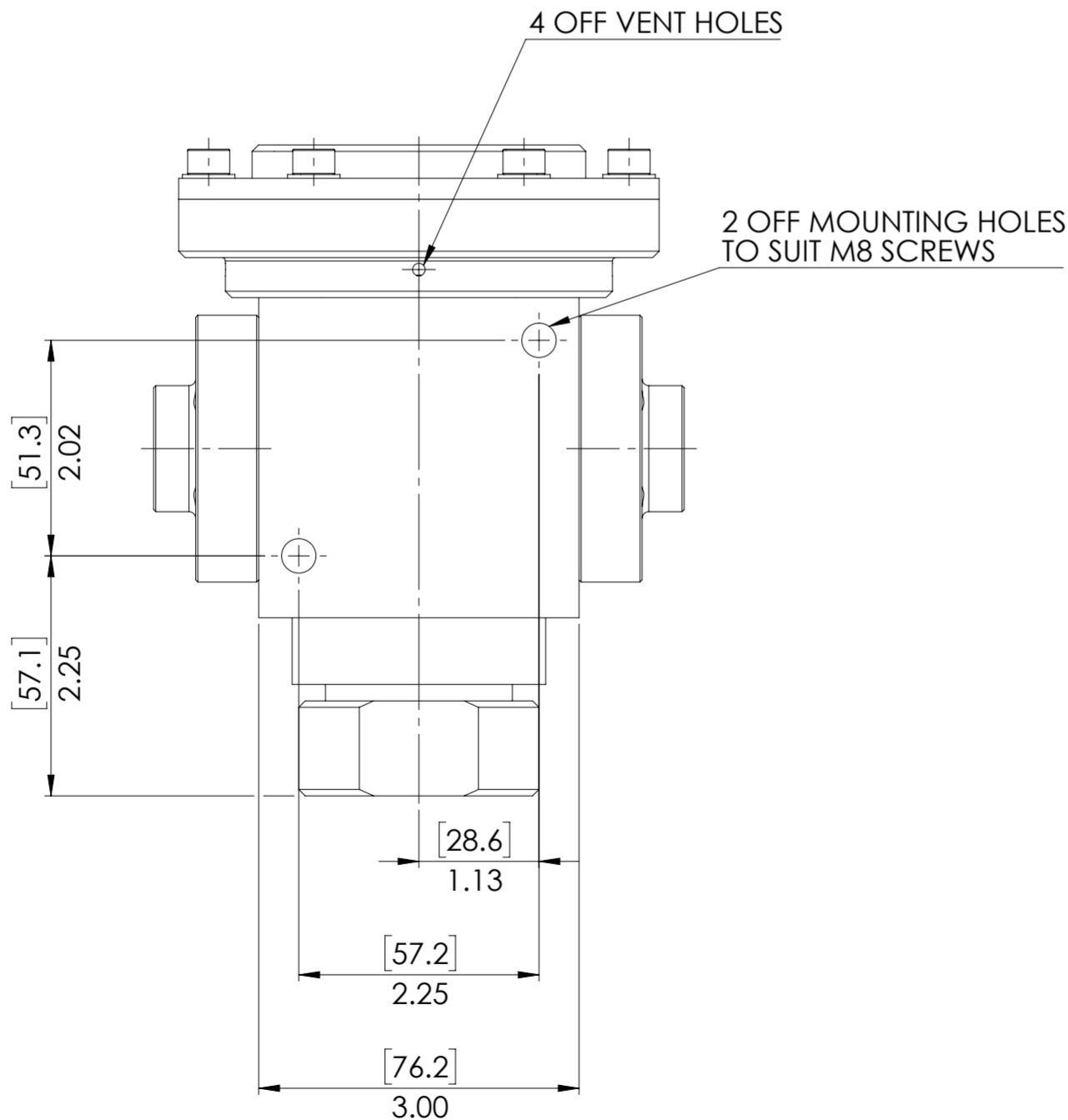
PILOT PORT (1/4" BSPP)



SPECIFICATION

- MAXIMUM WORKING PRESSURE: 500 Bar (7,250 Psi)
- Cv: 3.0.
- 2 PORT 2 POSITION (2/2)
- PRESSURE BIASED*
- NORMALLY CLOSED
- PILOT MEDIUM: GAS OR LIQUID
- DRY WEIGHT: 6.8 kg (15.1 lbs)

*NOTE - THIS PRODUCT HAS A RECOMMENDED MINIMUM OPERATING PRESSURE OF 100 Bar (1,450 psi) FOR LEAK-TIGHT OPERATION. CONTACT THE FACTORY FOR OTHER ALTERNATIVES.



© AND DESIGN RIGHT Bis Wells LTD. ALL RIGHTS RESERVED. WITHOUT THE PRIOR WRITTEN PERMISSION OF Bis Wells Ltd NO PART OF THIS DOCUMENT MAY BE ALTERED, ADAPTED, PUBLISHED, REPRODUCED OR TRANSMITTED IN ANY FORM OR MEDIUM.				UNLESS OTHERWISE SPECIFIED DIMENSIONS ARE IN INCHES 1. LINEAR TOLERANCES : ±0.1" 2. ANGULAR TOLERANCES : ±2°			
DRAWN	J.PHELAN	SHEET	1 OF 1	DRAWING SIZE	A2	DRAWING SCALE	2:3
DATE	09/07/21	ISSUE	3	3RD ANGLE PROJECTION		DRAWING NUMBER	DS0073