

DATASHEET

SOLENOID VALVES: E84 & E84H2

Model Code Structure - Standard Model Code in Red

Valve Model	Solenoid Model	Conduit	Voltage	Reset	Pressure	Port Type	Seal Material	Wetted Materials
E84- 2/2 Normally Open	SD Ex db Solenoid	1 M20 x 1.5	A 12 Vdc	A Automatic	16 16 Bar	25P 1/4" BSP	N Nitrile. -25°C to + 105°C	SS/SS Stainless Steel
E84H2- 2/2 NO. Hydrogen Use	SM Ex mb Solenoid	2 1/2" NPT	B 24 Vdc	O Override		25N 1/4" NPT	V FKM. -10°C to + 120°C	
			C 48 Vdc	M Manual Reset		37P 3/8" BSP	E EPDM. -45°C to + 150°C	
			D 115 Vdc			37N 3/8" NPT		
			E 24 Vac					
			F 48 Vac					
			G 115 Vac					
			H 230 Vac					

AMBIENT TEMPERATURE LIMITS

Ex db IIC T4 Gb & T6 Gb and Ex tb IIIC T4 Db & T6 Db

SOLENOID SEAL MATERIAL	MIN Tamb (°C)	MAX Tamb (°C) (T4 135°C)	MAX Tamb (°C) (T6 85°C)
SILICONE	-60	85	40

Ex mb IIC T4 Gb and Ex mb IIIC T4 Db

SOLENOID SEAL MATERIAL	MINIMUM Tamb (°C)	MAXIMUM Tamb (°C) (T4 135°C)
SILICONE	-40	60

SPECIFICATION:

POWER RATING: 3 WATTS (3.5 WATTS FOR MANUAL RESET VERSION)

Cv: 0.6

WEIGHT: 2.9 Kg

IP RATING: IP68

SUITABLE FOR BOTH GASES AND LIQUIDS

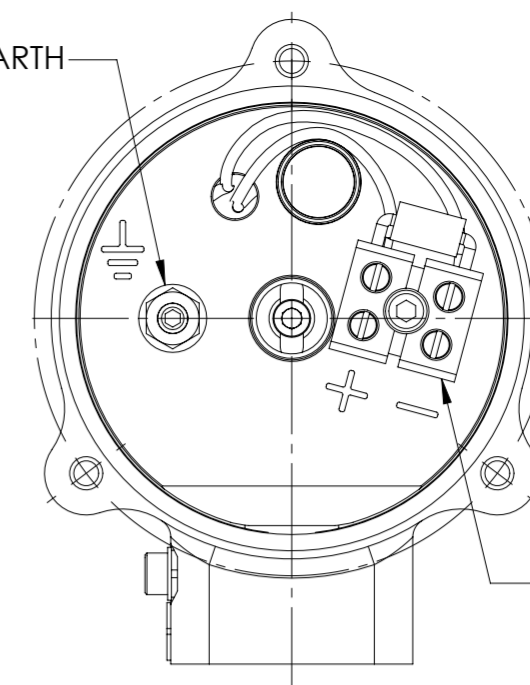
SURGE SUPPRESSION DIODE FITTED AS STANDARD

COIL INSULATION CLASS H

PRESSURE BALANCED DESIGN. INLET PRESSURE CAN BE APPLIED TO EITHER PORT.

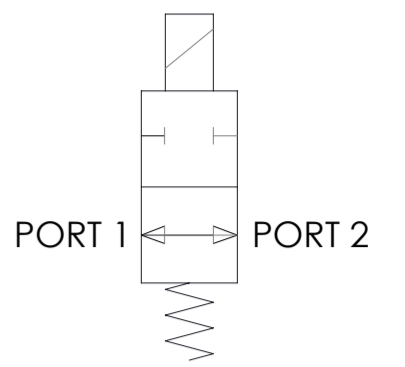
VIEW WITH LID REMOVED

INTERNAL EARTH

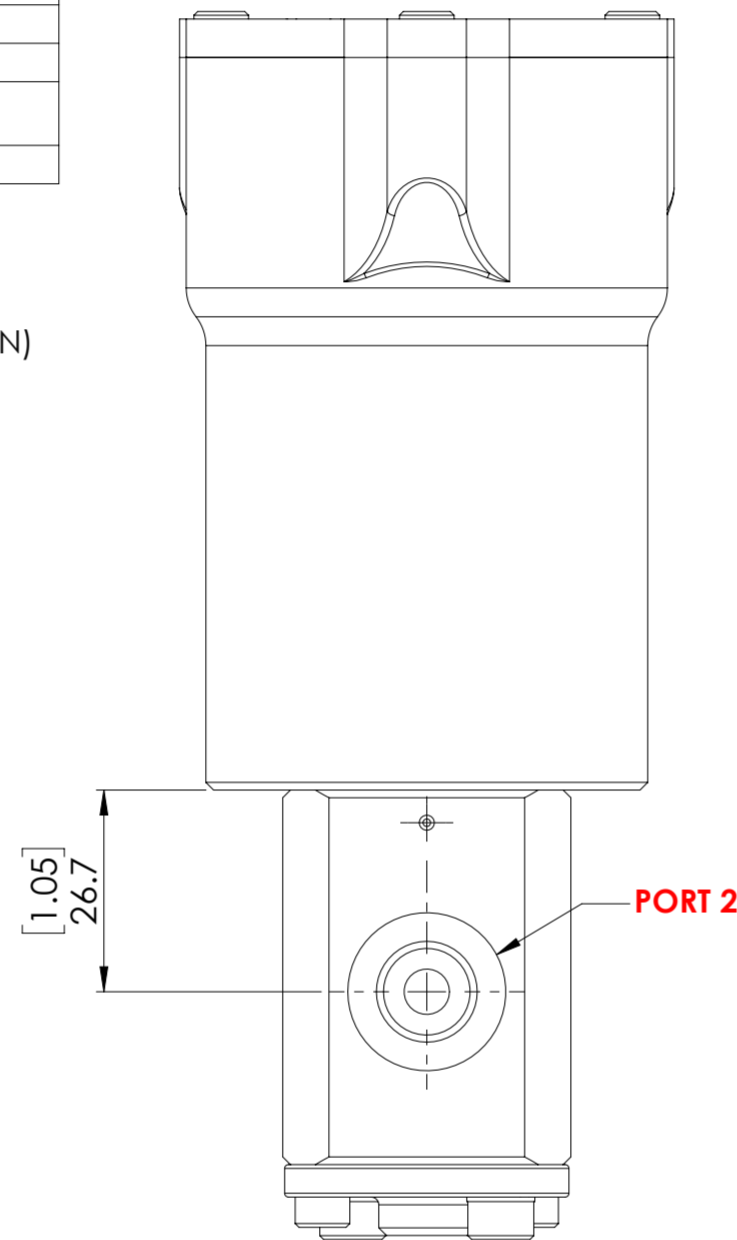
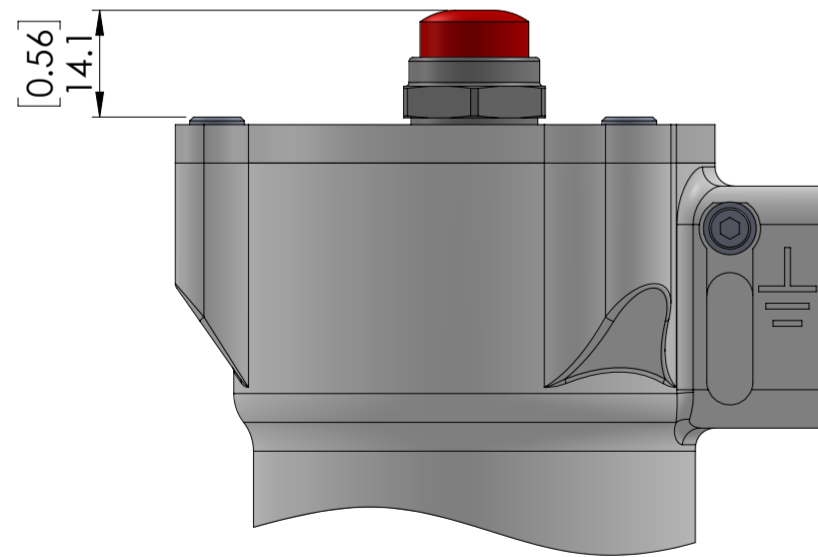


ELECTRICAL SUPPLY TERMINAL BLOCK

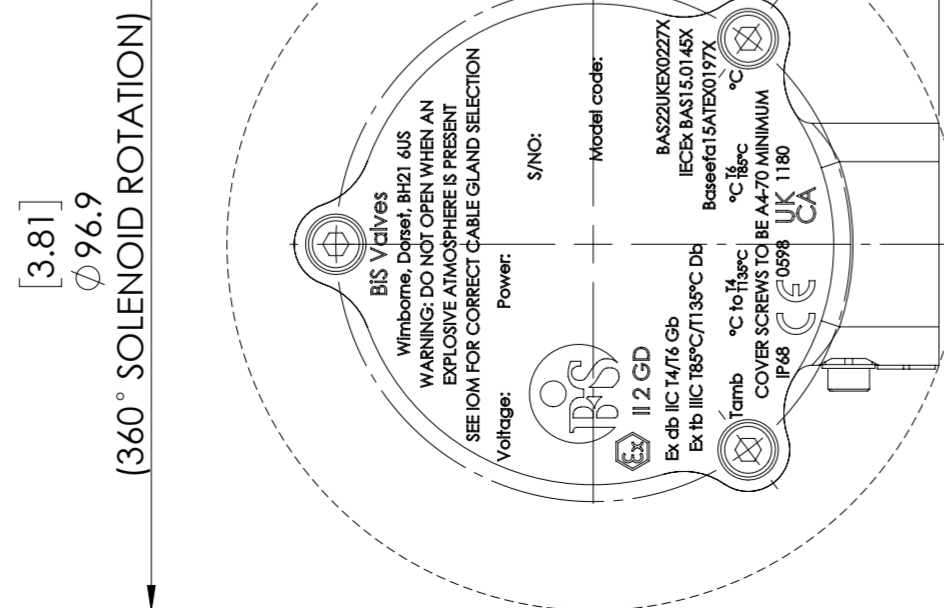
VALVE SYMBOL



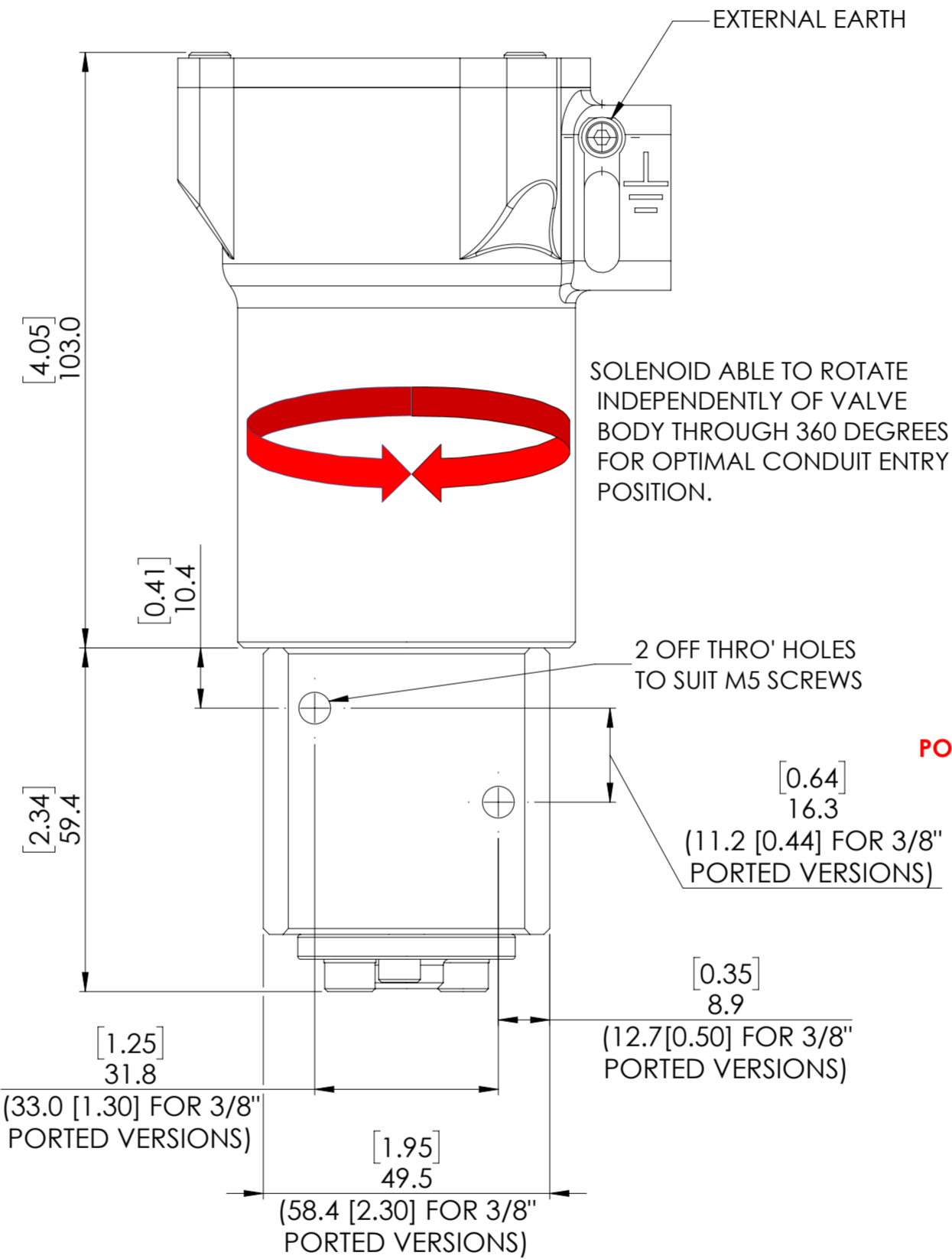
DETAIL OF MANUAL RESET AND OVERRIDE PUSH BUTTON ARRANGEMENT



PORT 2



[3.81] 96.9
[360° SOLENOID ROTATION]



EXTERNAL EARTH

SOLENOID ABLE TO ROTATE INDEPENDENTLY OF VALVE BODY THROUGH 360 DEGREES FOR OPTIMAL CONDUIT ENTRY POSITION.

2 OFF THRO' HOLES TO SUIT M5 SCREWS

[0.64] 16.3
(11.2 [0.44] FOR 3/8" PORTED VERSIONS)

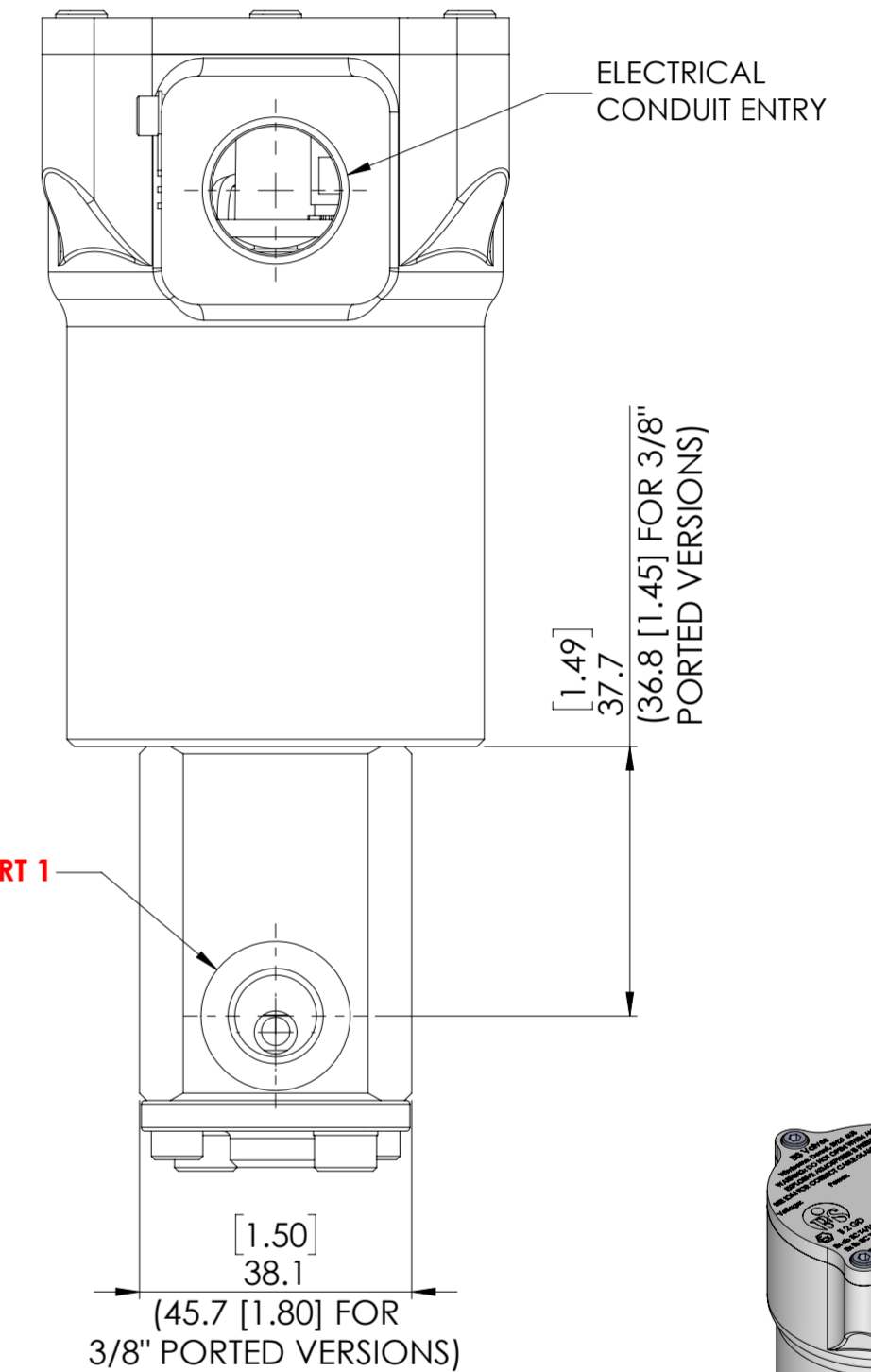
[0.35] 8.9
(12.7 [0.50] FOR 3/8" PORTED VERSIONS)

[1.25] 31.8
(33.0 [1.30] FOR 3/8" PORTED VERSIONS)

[1.95] 49.5
(58.4 [2.30] FOR 3/8" PORTED VERSIONS)

M5 SOLENOID ROTATION LOCKING SCREWS

DO NOT UNDO THESE M4 SCREWS WHEN ROTATING THE SOLENOID

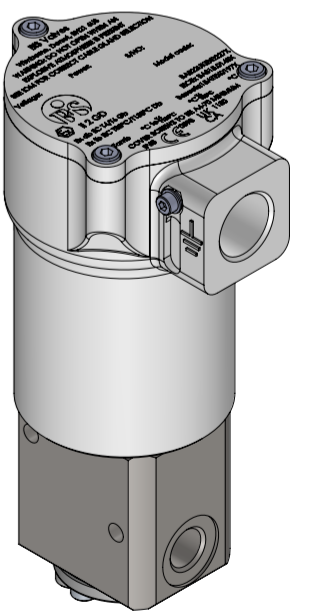


PORT 1

ELECTRICAL CONDUIT ENTRY

[1.49] 37.7
(36.8 [1.45] FOR 3/8" PORTED VERSIONS)

[1.50] 38.1
(45.7 [1.80] FOR 3/8" PORTED VERSIONS)



© AND DESIGN RIGHT BIS WELLS LTD. ALL RIGHTS RESERVED. WITHOUT THE PRIOR WRITTEN PERMISSION OF BIS WELLS LTD NO PART OF THIS DOCUMENT MAY BE ALTERED, ADAPTED, PUBLISHED, REPRODUCED OR TRANSMITTED IN ANY FORM OR MEDIUM.

UNLESS OTHERWISE SPECIFIED, DIMENSIONS ARE IN MILLIMETRES. ALTERNATIVE DIMENSIONS IN SQUARE BRACKETS ARE IN INCHES.

DRAWN	SHEET	DRAWING SIZE	DRAWING SCALE	DRAWING NUMBER
J. KIM	1 OF 1	A2	1:1	DS0127
DATE	ISSUE	3RD ANGLE PROJECTION		
17/09/24	1			