

DATASHEET

COALESCING 'T' FILTER: F24C (STAINLESS STEEL VERSION UP TO 1,035 BAR)

MODEL CODE					
F24C -	5	E	SS	81AE	N

MODEL TYPE	F24C - COALESCING 'T' FILTER
------------	------------------------------

MAXIMUM WORKING PRESSURE	5 1,035 bar (15,000 psi)
--------------------------	--------------------------

FILTER ELEMENT BINDER	E EPOXY ESTER
-----------------------	---------------

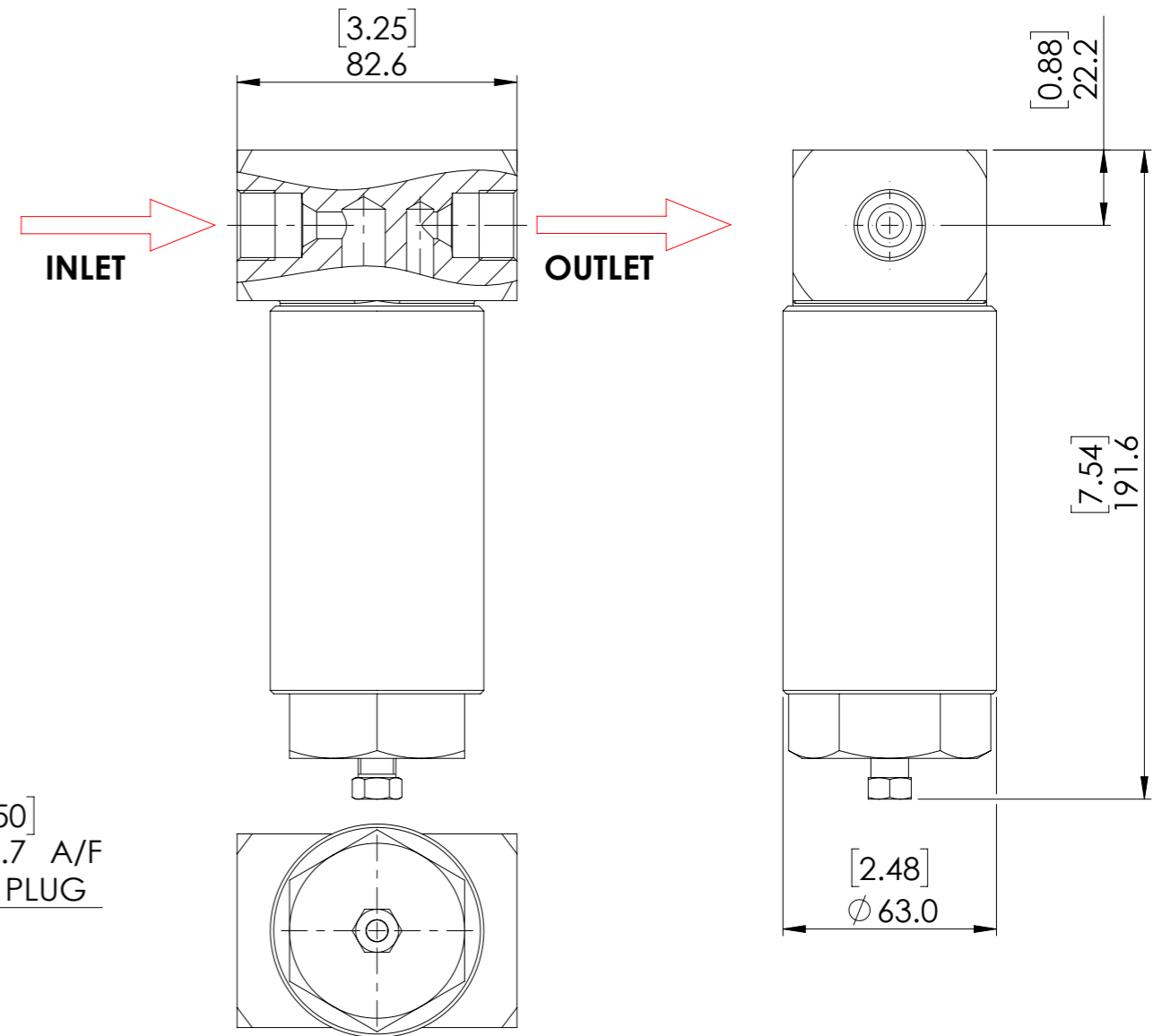
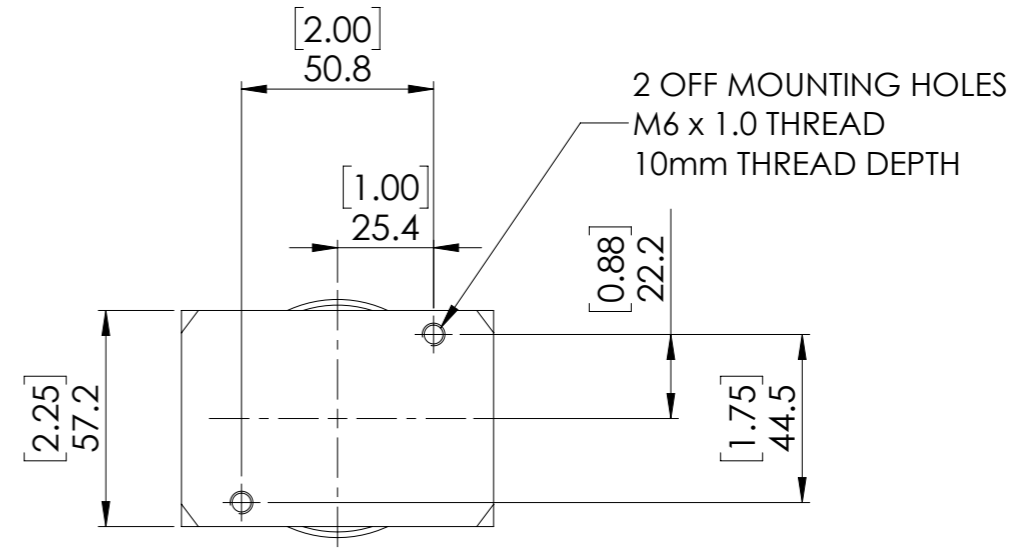
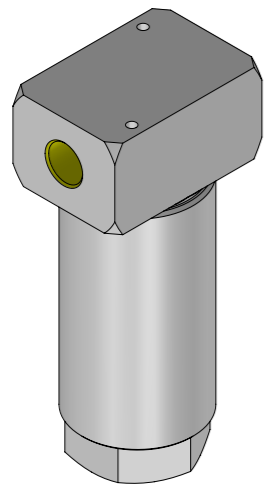
SEAL MATERIAL	
N	NITRILE
V	FKM
E	EPDM

PORTS	81AE 9/16" MP FEMALE
-------	----------------------

EXTERNAL MATERIAL	SS STAINLESS STEEL
-------------------	--------------------

SPECIFICATION

- MEDIUM: GASES
- DRY WEIGHT: 3.9 kg (8.59 lb)
- OTHER SEAL MATERIALS AVAILABLE ON REQUEST.
- FILTER ELEMENT STRUCTURE: BOROSILICATE GLASS MICROFIBRES WITH BINDER.
- 99.5% REMOVAL OF 0.01 MICRON PARTICLES AND AEROSOLS.
- PLEASE CONTACT US WITH YOUR APPLICATION DETAILS TO OBTAIN A RECOMMENDATION FOR PRODUCT SUITABILITY.



© AND DESIGN RIGHT BIS Wells LTD. ALL RIGHTS RESERVED. WITHOUT THE PRIOR WRITTEN PERMISSION OF BIS Wells Ltd NO PART OF THIS DOCUMENT MAY BE ALTERED, ADAPTED, PUBLISHED, REPRODUCED OR TRANSMITTED IN ANY FORM OR MEDIUM.

UNLESS OTHERWISE SPECIFIED DIMENSIONS ARE IN MILLIMETRES. ALTERNATIVE DIMENSIONS IN SQUARE BRACKETS ARE IN INCHES.

DRAWN R.KNOWLES	SHEET 1 OF 1		DRAWING SIZE A3	DRAWING SCALE 1:2	DRAWING NUMBER DS0128
DATE 24/09/24	ISSUE 1				