

DATASHEET

PRESSURE REGULATOR: A100 AND A101

MODEL CODE						
A100 -	1	1	AA	50P	N	0

MODEL TYPE	
A100 -	DOME LOADED INTERNALLY
A101 -	DOME LOADED EXTERNALLY

MAXIMUM INLET PRESSURE	
1	70 Bar (1000 Psi)

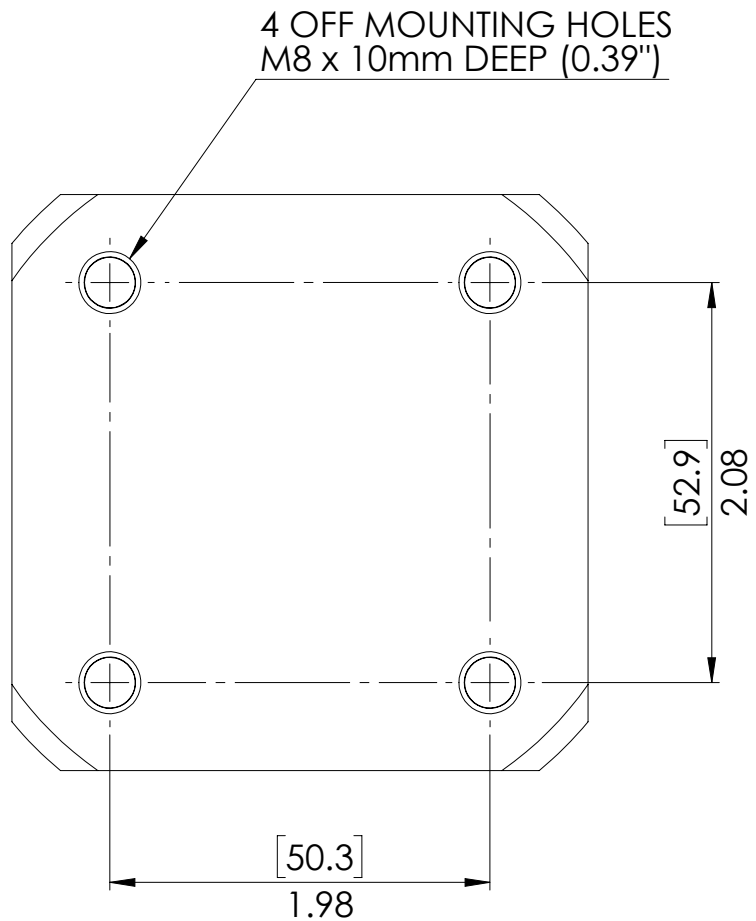
SET PRESSURE RANGE	
1	0.05 ~ 62 Bar (0.75 ~ 900 Psi)

BODY MATERIAL	
AA	ALUMINIUM ALLOY
SS	STAINLESS STEEL
AB	ALUMINIUM BRONZE
BR	BRASS

GAUGE PORT	
0	NO PORT
GB	1/4" BSPP INLET & OUTLET

SEALS	
N	NITRILE (-25°C TO +80°C)*
V	VITON (-15°C TO +80°C)*
OTHER MATERIALS AVAILABLE ON REQUEST	

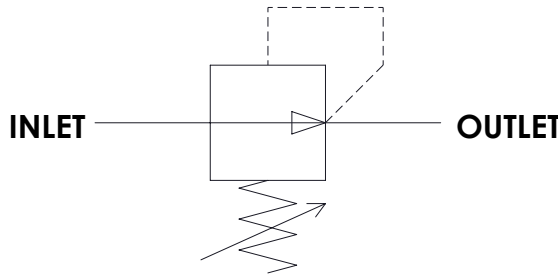
PORTING	
50P	1/2" BSPP
50N	1/2" NPT



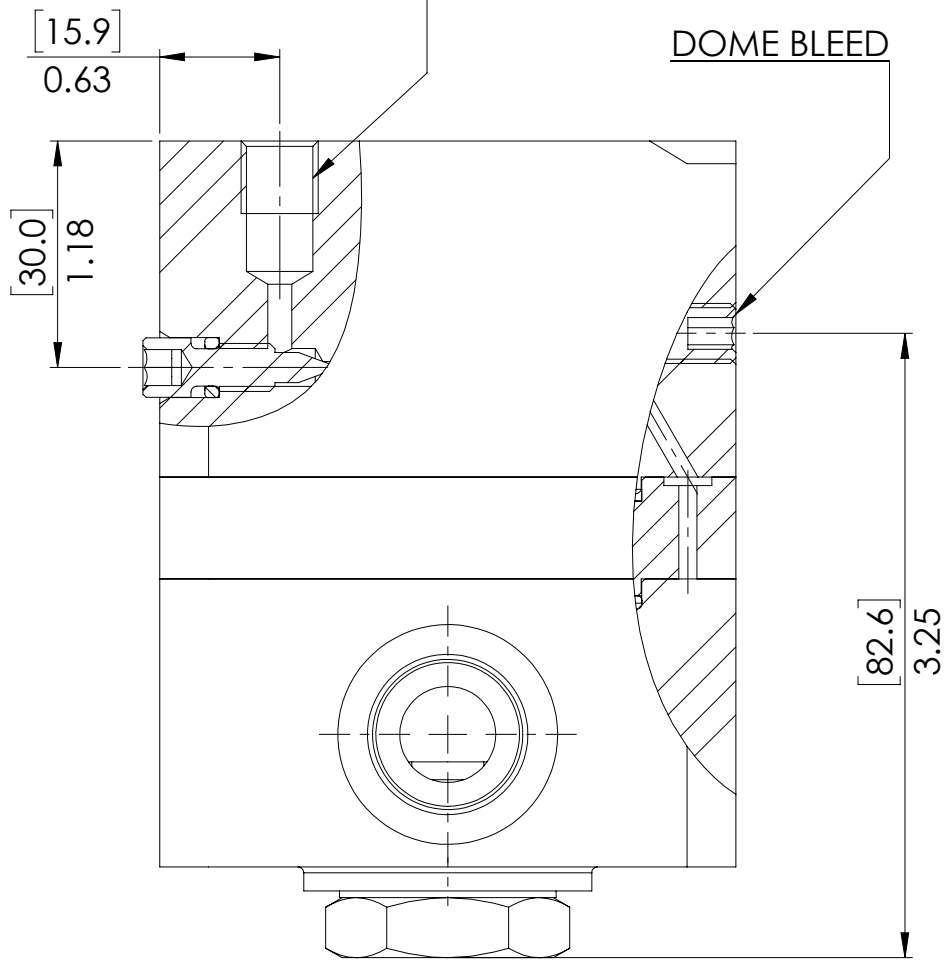
SPECIFICATION

- ORIFICE: 11.1mm (0.437")
- MEDIUM: A100 - GAS ONLY
- MEDIUM: A101 - GAS AND LIQUID
- CAPACITY VALUE: 1.6
- DRY WEIGHT: 1.1kg (3.3 lb) (ALUMINIUM ALLOY)
- OXYGEN SERVICE AVAILABLE

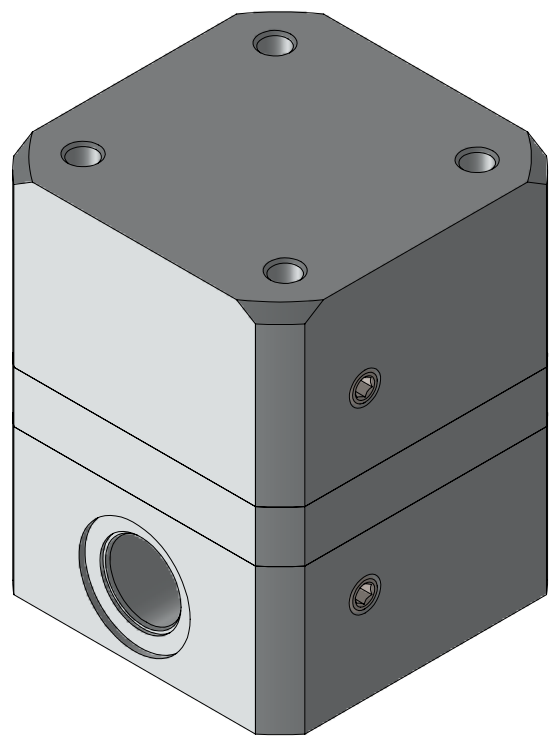
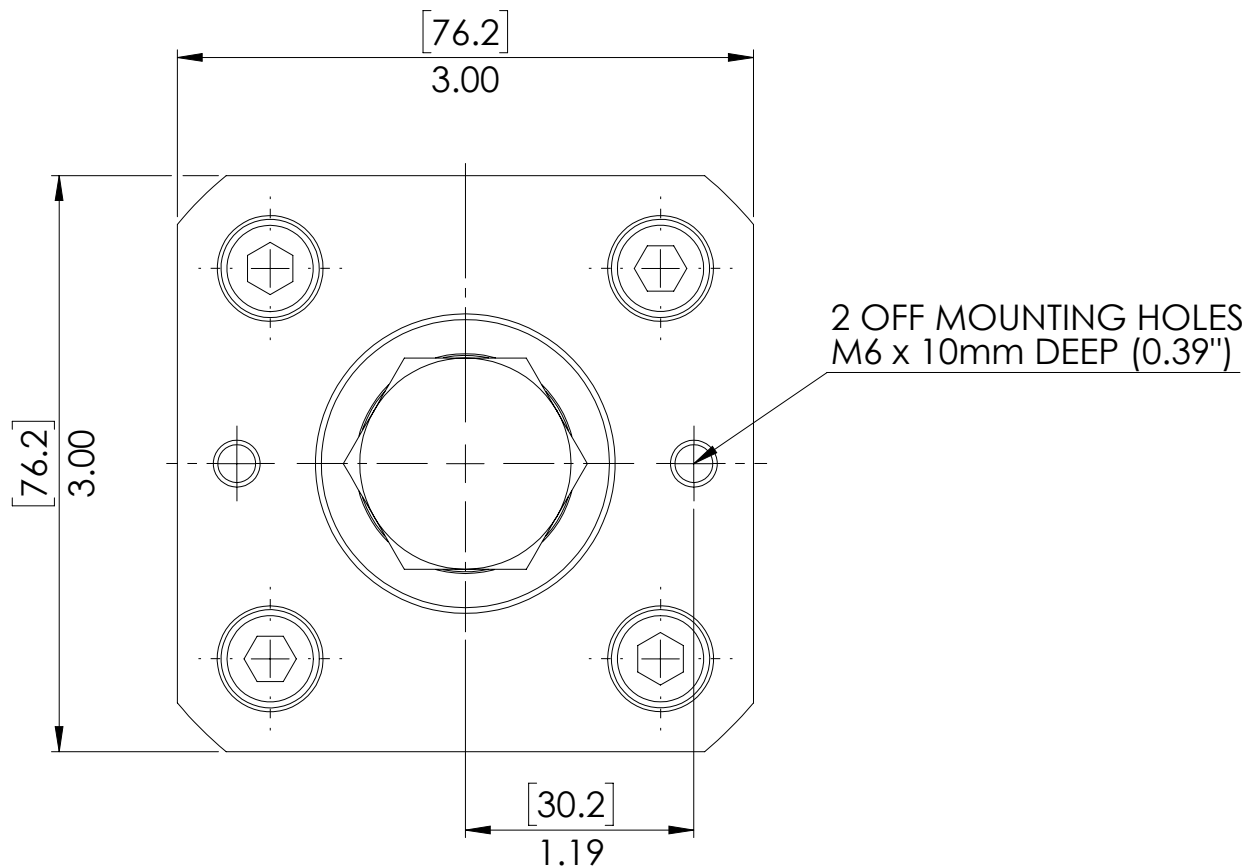
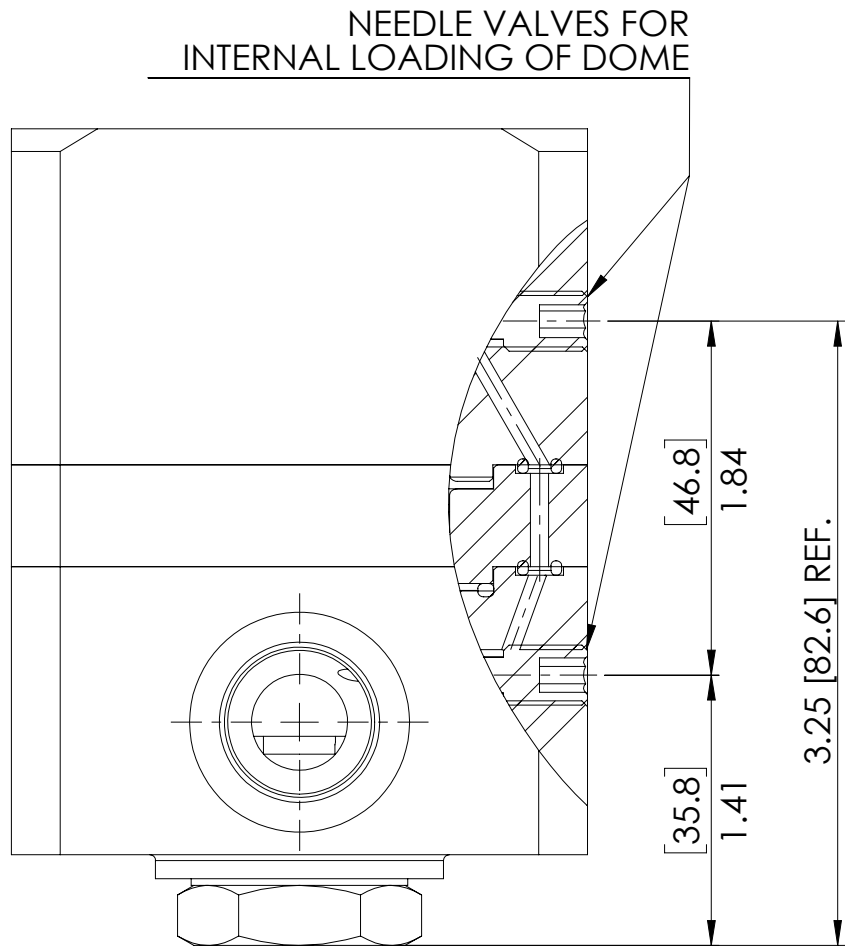
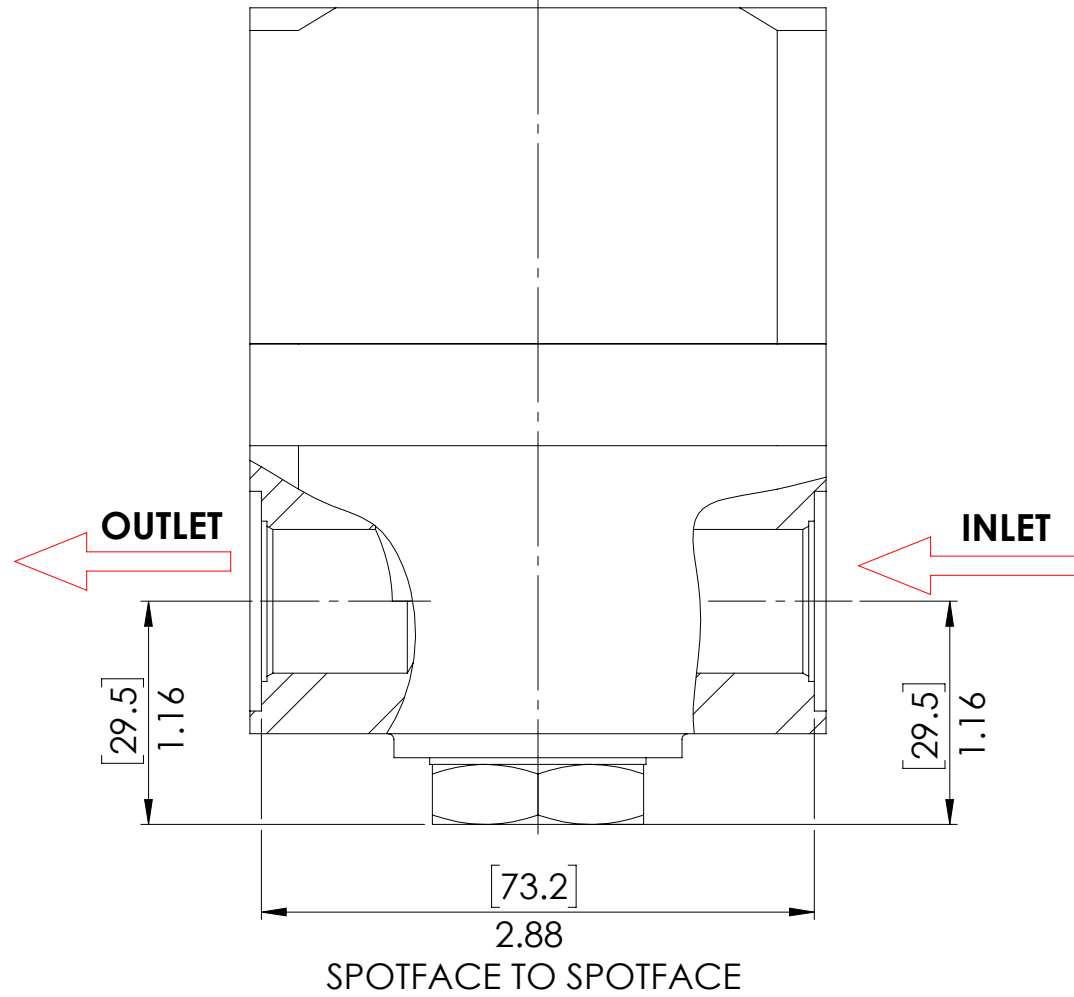
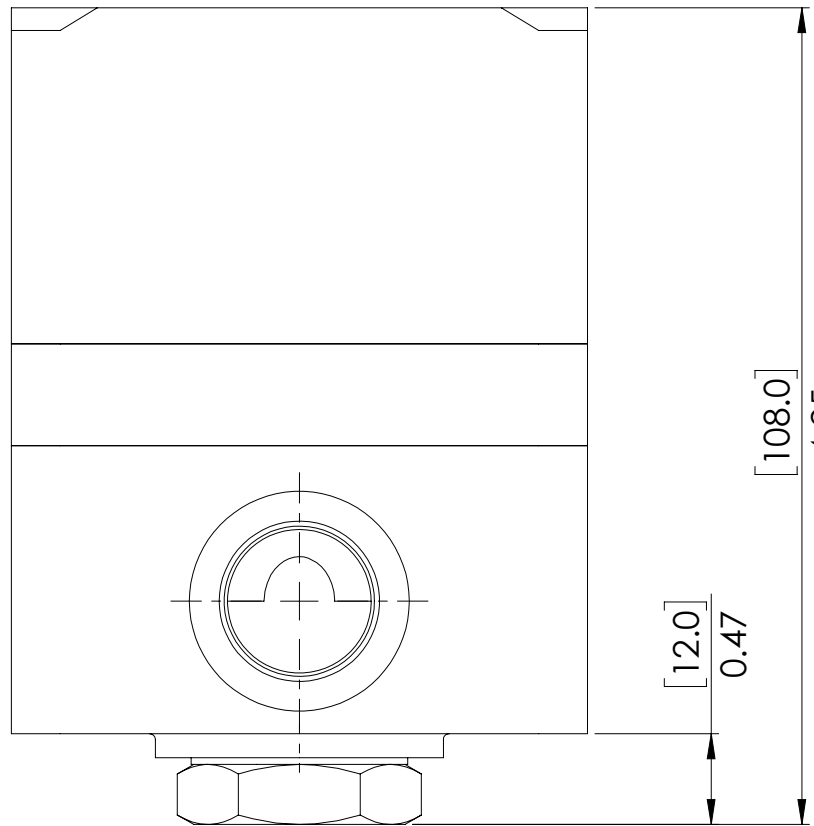
VALVE CIRCUIT SYMBOL



A101 VALVES ONLY. 1/8" BSPP
EXTERNAL DOME LOADING PORT




VIEW SHOWING A101 VALVE.
(NOTE: A100 SHOWN IN ALL OTHER VIEWS)



* THE NOMINAL TEMPERATURE RATINGS SHOWN ARE BASED ON MAXIMUM
PRESSURE & STATIC PRESSURE CONDITIONS. ACTUAL TEMPERATURE PERFORMANCE
WILL VARY WITH APPLICATION. TEMPERATURE TESTING IS ADVISED WHERE CRITICAL.



© AND DESIGN RIGHT BIS Wells LTD. ALL RIGHTS RESERVED. WITHOUT THE PRIOR WRITTEN PERMISSION OF BIS Wells Ltd NO PART OF THIS DOCUMENT MAY BE ALTERED, ADAPTED, PUBLISHED, REPRODUCED OR TRANSMITTED IN ANY FORM OR MEDIUM.					UNLESS OTHERWISE SPECIFIED DIMENSIONS ARE IN INCHES 1. LINEAR TOLERANCES : ±0.1" 2. ANGULAR TOLERANCES : ± 2°	
DRAWN N.DANIEL	SHEET 1 OF 1		DRAWING SIZE	DRAWING SCALE	DRAWING NUMBER	
DATE 5/11/19	ISSUE 3		A2	1:1	DS0017	