

DATASHEET

NON RETURN VALVE (NRV): D13 (3/4" NPT VERSION)

| MODEL CODE | | | | |
|------------|---|---|------|---|
| D13 - | 2 | A | 75NF | N |

| MODEL TYPE | |
|------------|------------------|
| D13 - | NON RETURN VALVE |
| D13H2- | HYDROGEN SERVICE |
| D13OX- | OXYGEN SERVICE |

| SEAL MATERIAL | |
|---------------|-----------------------------|
| N | NITRILE (-20 °C TO +80 °C)* |
| V | VITON (-10 °C TO +80 °C)* |
| E | EPDM (-40 °C TO +80 °C)* |

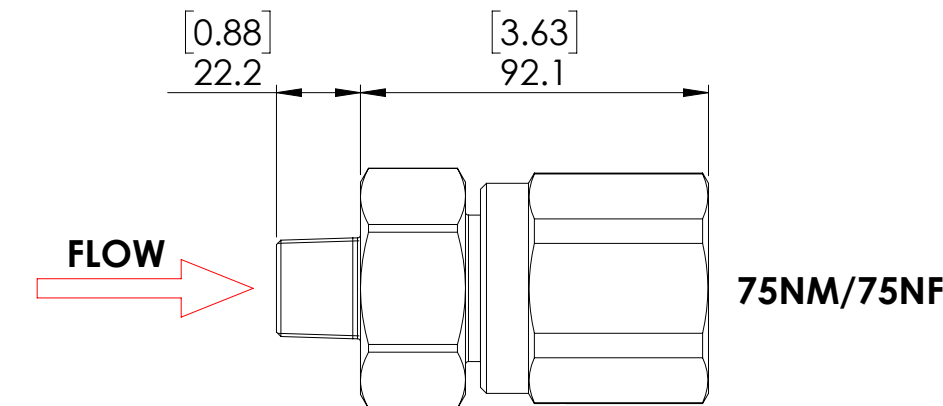
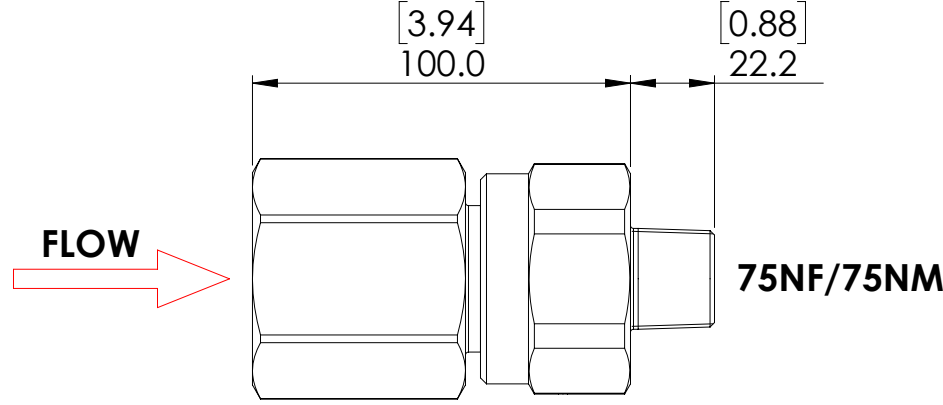
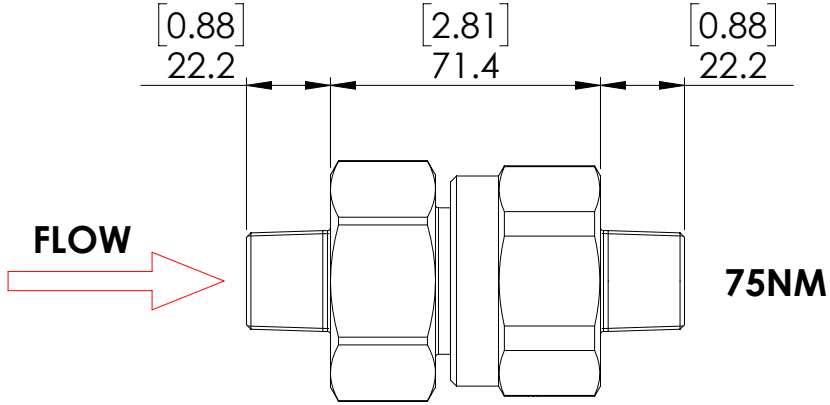
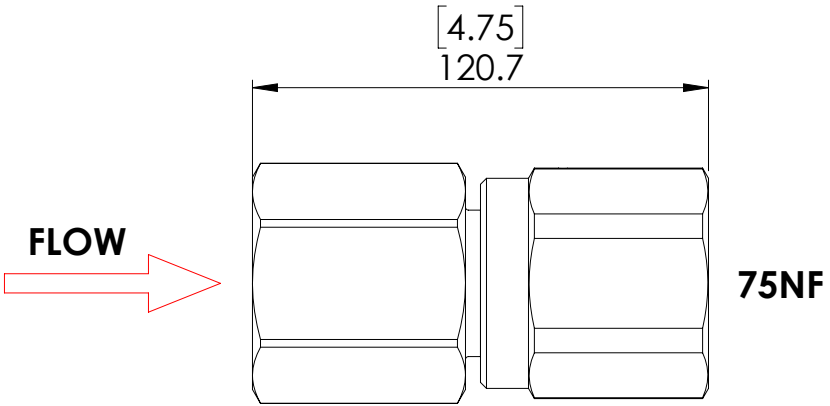
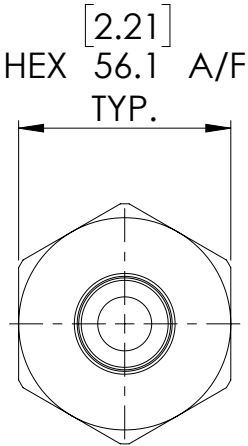
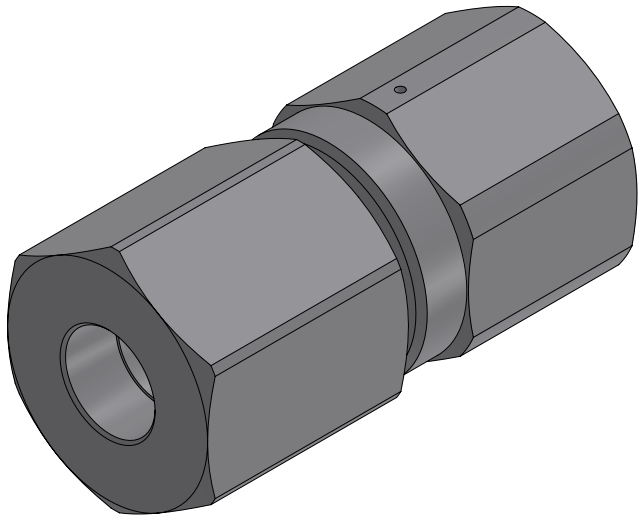
| MAXIMUM WORKING PRESSURE | |
|--------------------------|---------------------|
| 2 | 414 bar (6,000 psi) |

| PORTS | |
|-----------|---|
| 75NF | 3/4" NPT FEMALE CONNECTIONS |
| 75NM | 3/4" NPT MALE CONNECTIONS |
| 75NF/75NM | 3/4" NPT FEMALE INLET 3/4" NPT MALE OUTLET |
| 75NM/75NF | 3/4" NPT MALE INLET 3/4" NPT FEMALE OUTLET |

| BODY MATERIAL | |
|---------------|------------------|
| A | ALUMINIUM |
| AB | ALUMINIUM BRONZE |
| BR | BRASS |
| SS | STAINLESS STEEL |

SPECIFICATION

- WEIGHT: 0.8 kg (1.8 lb) ALUMINIUM ALLOY (FEMALE)
- ORIFICE DIAMETER: 14.3mm (0.56")
- SUITABLE FOR BOTH GAS AND LIQUID
- CRACKING PRESSURE: ~0.2 bar (~3 psi)



* THE NOMINAL TEMPERATURE RATINGS SHOWN ARE BASED ON MAXIMUM PRESSURE & STATIC PRESSURE CONDITIONS. ACTUAL TEMPERATURE PERFORMANCE WILL VARY WITH APPLICATION. TEMPERATURE TESTING IS ADVISED WHERE CRITICAL.

| | | | | | | | |
|--|--------------|--|--------------------|----------------------|--|--|--|
| © AND DESIGN RIGHT Bis Wells LTD. ALL RIGHTS RESERVED. WITHOUT THE PRIOR WRITTEN PERMISSION OF Bis Wells Ltd NO PART OF THIS DOCUMENT MAY BE ALTERED, ADAPTED, PUBLISHED, REPRODUCED OR TRANSMITTED IN ANY FORM OR MEDIUM. | | | | | UNLESS OTHERWISE SPECIFIED, DIMENSIONS ARE IN MILLIMETRES ALTERNATIVE DIMENSIONS IN SQUARE BRACKETS ARE IN INCHES | | |
| DRAWN J. KIM | SHEET 1 OF 1 | | DRAWING SIZE A3 | DRAWING SCALE 1:2 | DRAWING NUMBER DS0114 | | |
| DATE 07/05/24 | ISSUE 3 | | | | | | |