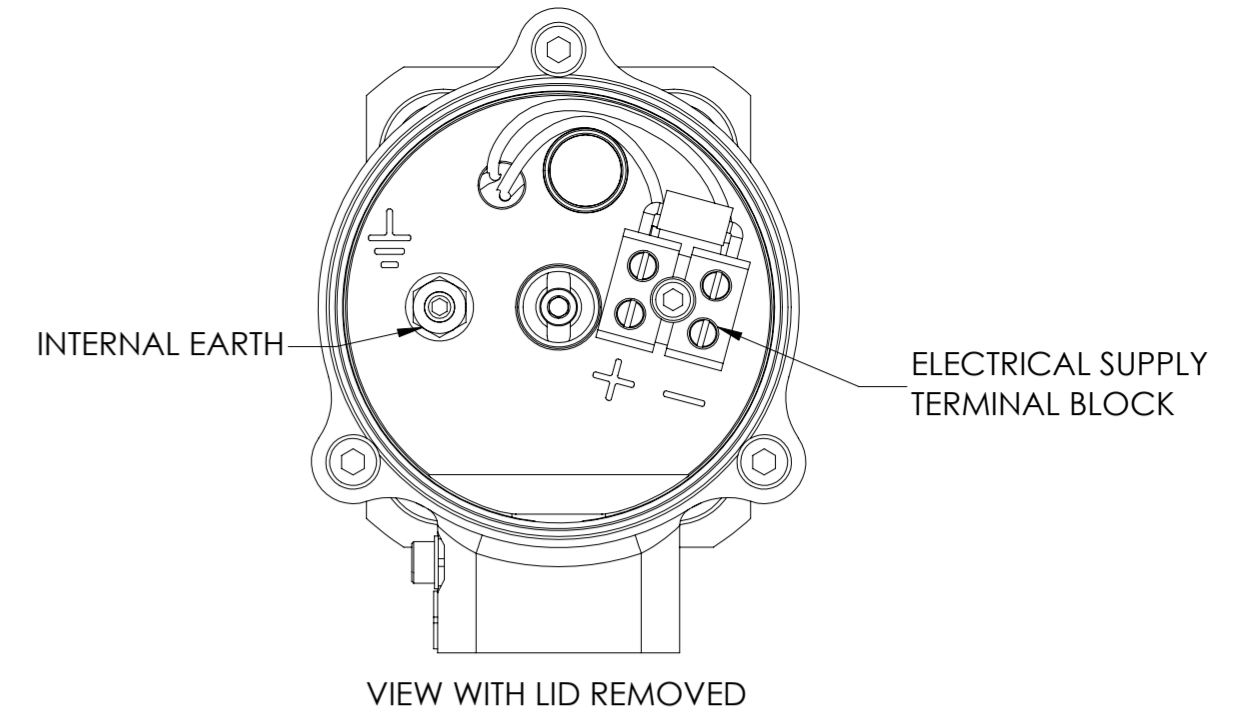


# DATASHEET

## SOLENOID VALVES: E28 AND E29

Model Code Structure - Standard Model Code in Red

Valve Model	Solenoid Model	Conduit	Voltage	Reset	Pressure	Port Type	Seal Material	Wetted Materials
<b>E28-</b> Normally Closed	<b>SD</b> Ex db Solenoid	<b>1</b> M20 x 1.5	<b>A</b> 12 Vdc	<b>A</b> Automatic	<b>60</b> 6,000 Psi	<b>25P</b> 1/4" BSP	<b>N</b> Nitrile (-20° C to +80° C)*	<b>SS/AL</b> Stainless / Aluminium
<b>E29-</b> Normally Open	<b>SM</b> Ex mb Solenoid	<b>2</b> 1/2" NPT	<b>B</b> 24 Vdc	<b>O</b> Override		<b>25N</b> 1/4" NPT	<b>V</b> Viton (-10° C to +80° C)*	<b>SS/SS</b> Stainless / Stainless
			<b>C</b> 48 Vdc	<b>M</b> Manual Reset		<b>56AE</b> 3/8" OD Medium Pressure (9/16" x 18 UNF)	<b>S</b> Silicone (-50° C to +80° C)*	<b>SS/BR</b> Stainless / Brass
			<b>D</b> 115 Vdc				<b>UH</b> Low Temp HNBR (-45° C to +80° C)*	
			<b>E</b> 24 Vac				<b>E</b> EPDM (-40° C to +80° C)*	
			<b>F</b> 48 Vac					
			<b>G</b> 115 Vac					
			<b>H</b> 230 Vac					



AMBIENT TEMPERATURE LIMITS			
Ex db IIC T4 Gb & T6 Gb and Ex fb IIC T4 Db & T6 Db			
SOLENOID SEAL MATERIAL	MIN Tamb (°C)	MAX Tamb (°C) (T4 135°C)	MAX Tamb (°C) (T6 85°C)
SILICONE	-60	85	40
Ex mb IIC T4 Gb and Ex mb IIC T4 Db			
SOLENOID SEAL MATERIAL	MINIMUM Tamb (°C)	MAXIMUM Tamb (°C) (T4 135°C)	
SILICONE	-40	60	

**SPECIFICATION:**

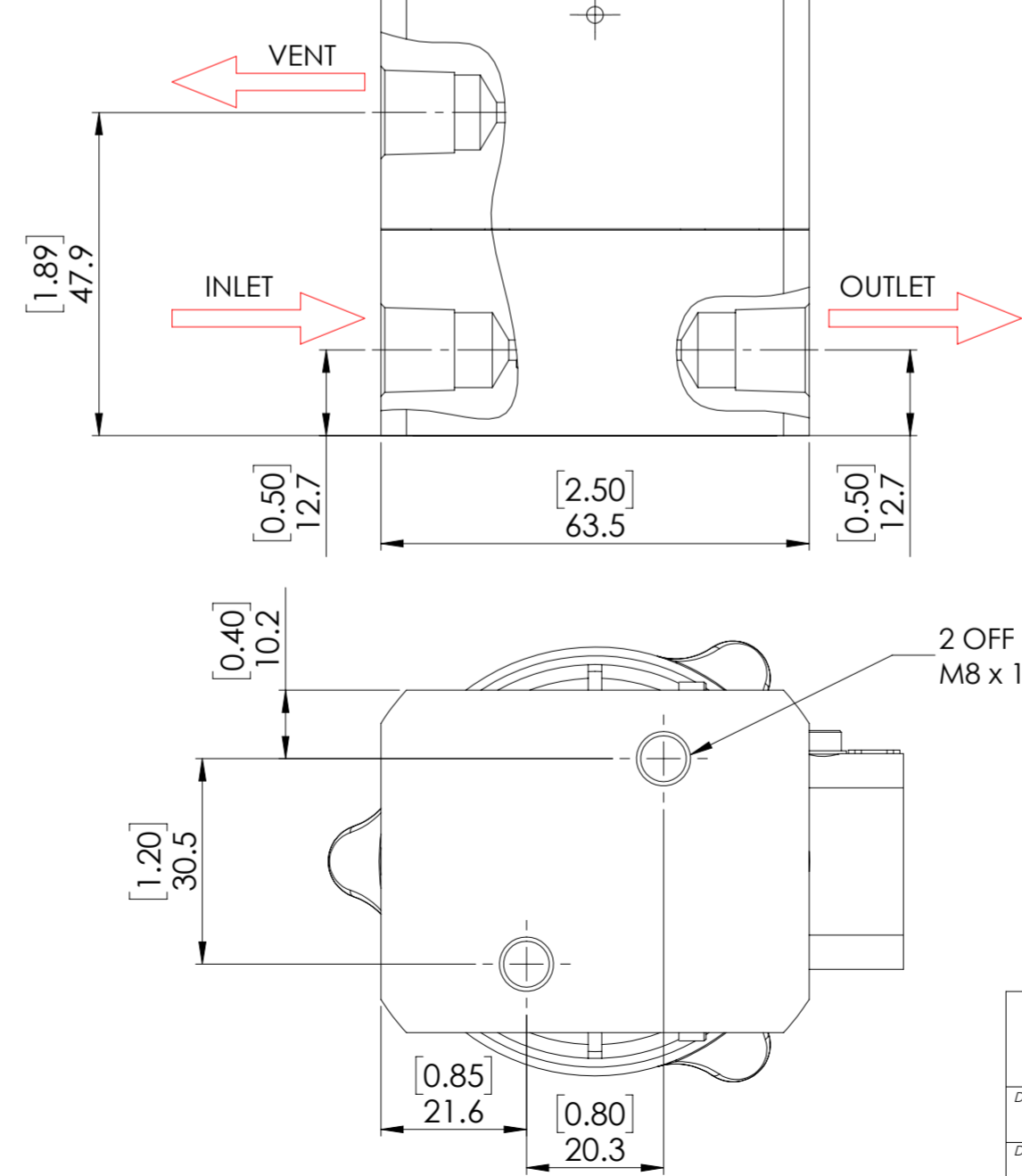
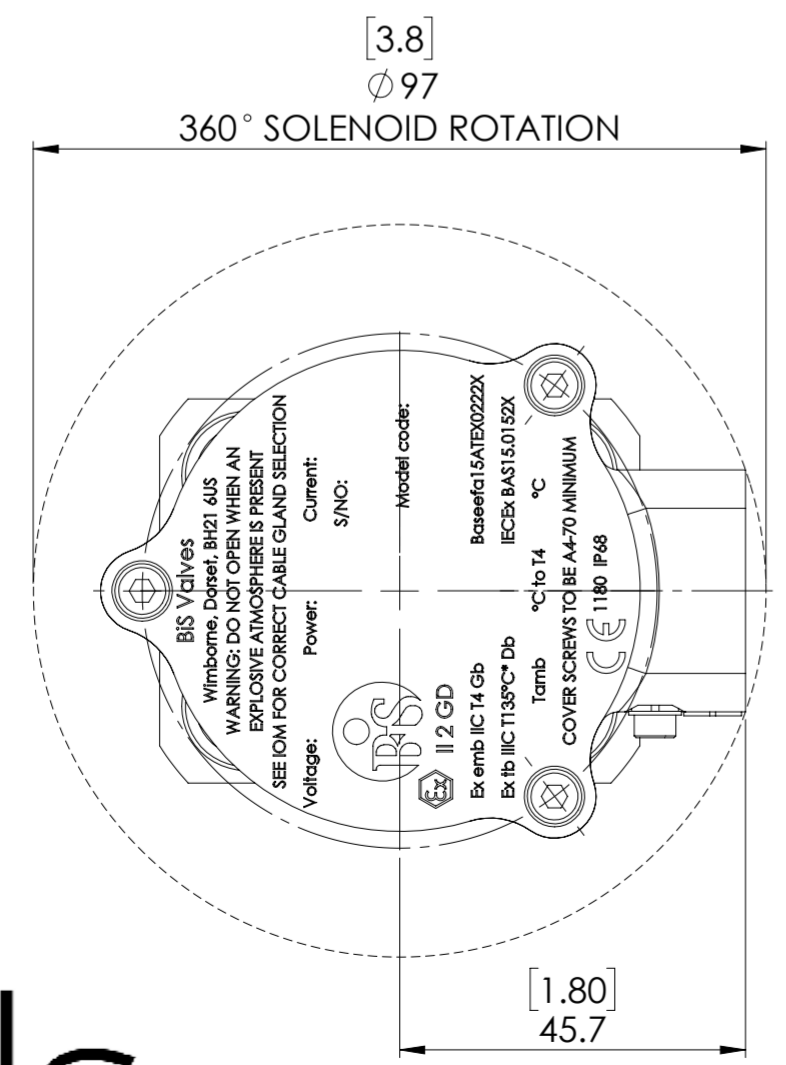
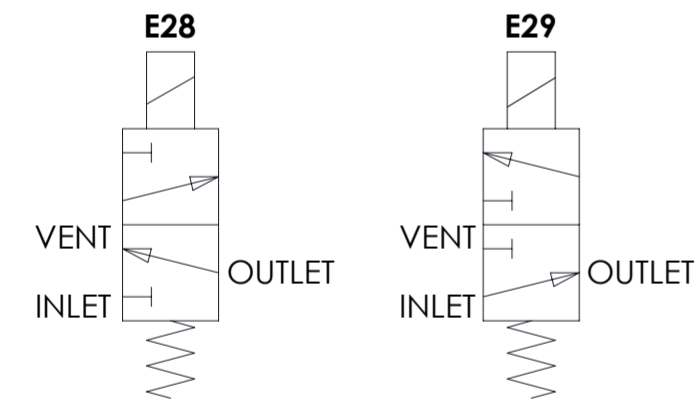
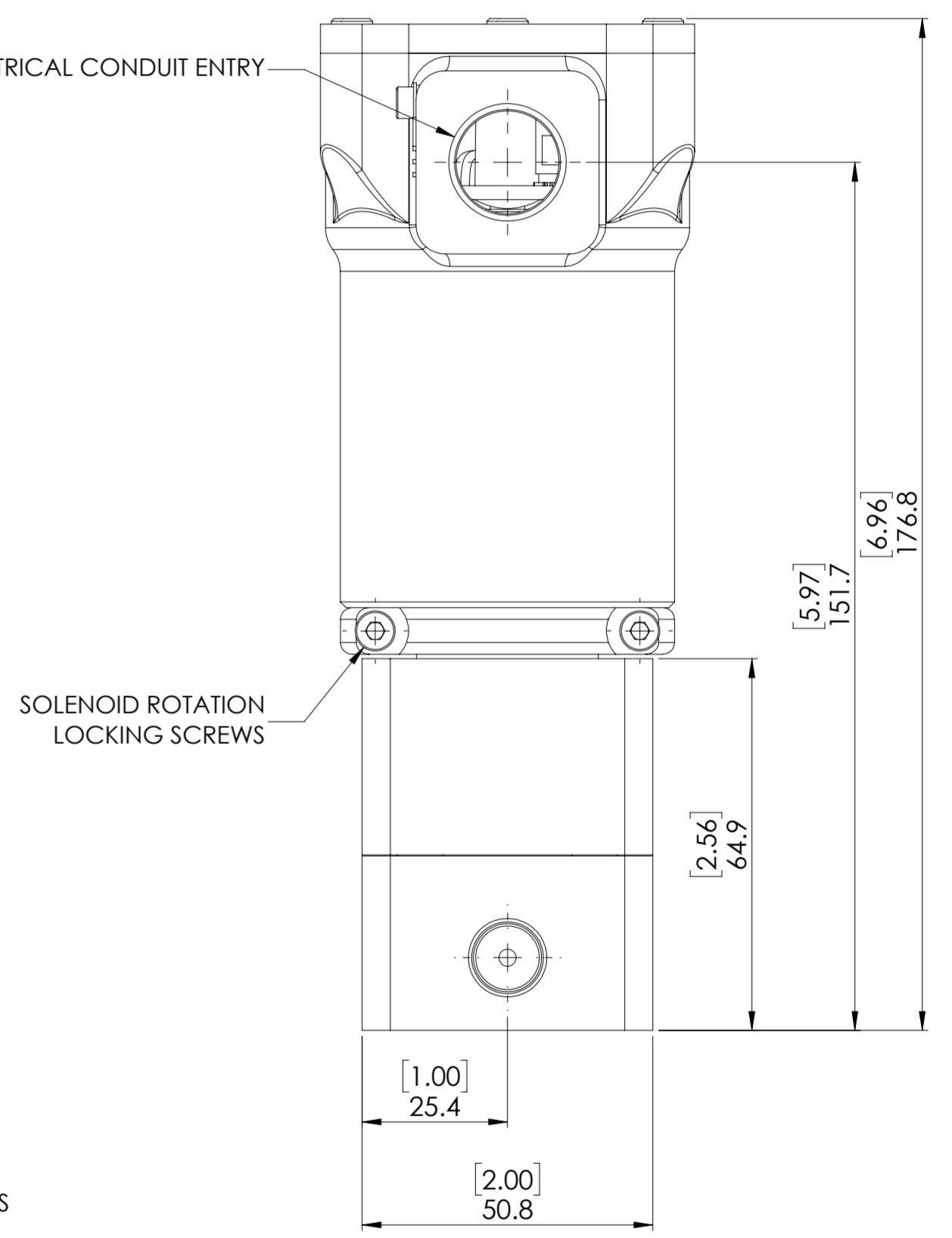
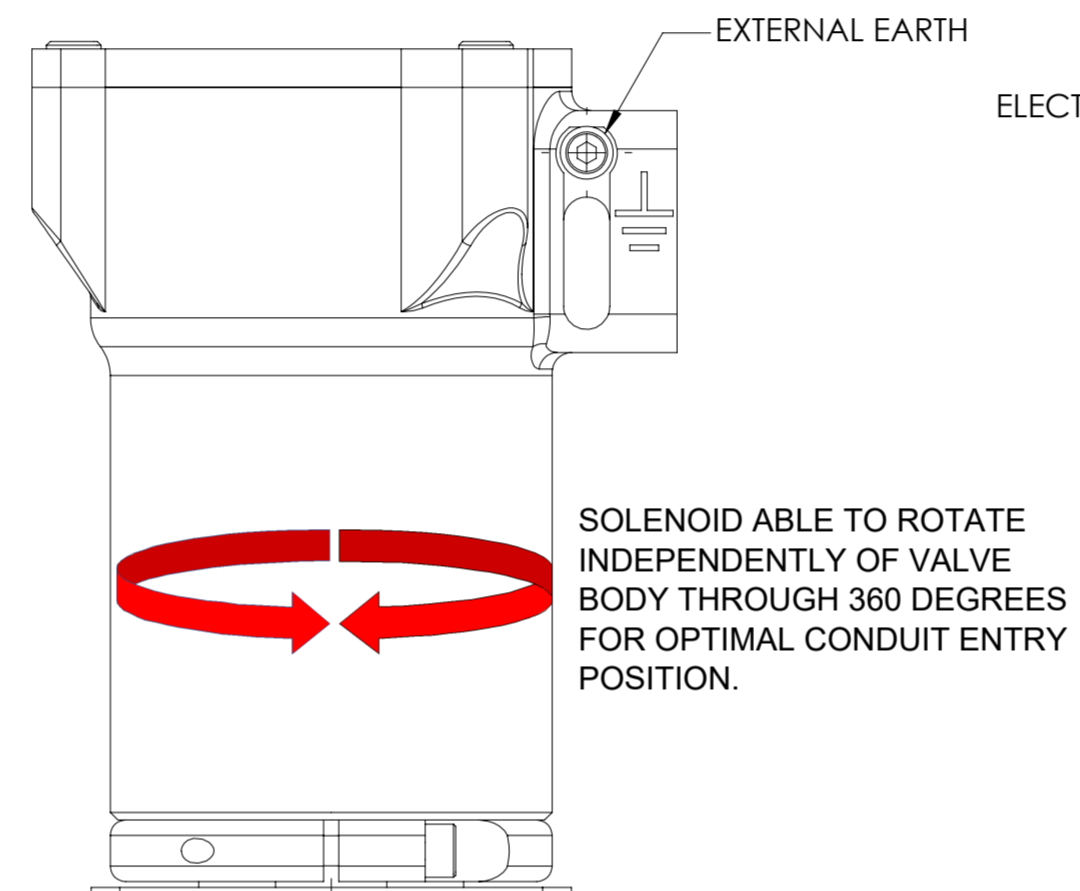
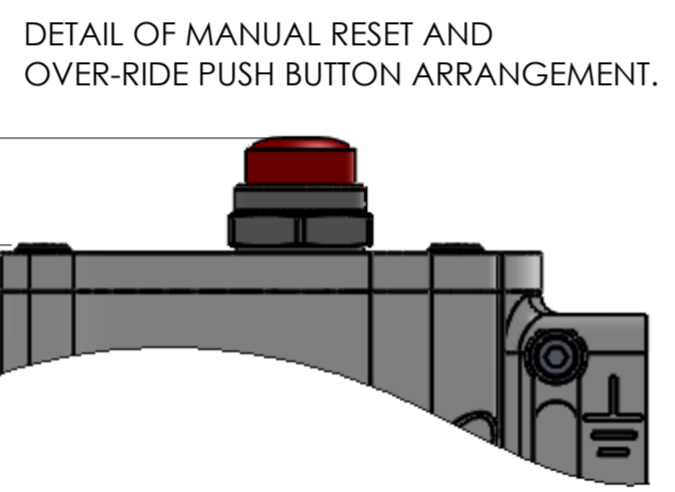
POWER RATING: 8 WATTS

Cv: 0.06

WEIGHT: 2.7 Kg (ALUMINIUM BODY VERSION)

IP RATING: IP68

SURGE SUPPRESSION DIODE FITTED AS STANDARD



\* THE NOMINAL TEMPERATURE RATINGS SHOWN ARE BASED ON MAXIMUM PRESSURE & STATIC PRESSURE CONDITIONS. ACTUAL TEMPERATURE PERFORMANCE WILL VARY WITH APPLICATION. TEMPERATURE TESTING IS ADVISED WHERE CRITICAL.



© AND DESIGN RIGHT BIS WELLS LTD. ALL RIGHTS RESERVED. WITHOUT THE PRIOR WRITTEN PERMISSION OF BIS WELLS LTD NO PART OF THIS DOCUMENT MAY BE ALTERED, ADAPTED, PUBLISHED, REPRODUCED OR TRANSMITTED IN ANY FORM OR MEDIUM.				UNLESS OTHERWISE SPECIFIED, DIMENSIONS ARE IN MILLIMETRES ALTERNATIVE DIMENSIONS IN SQUARE BRACKETS ARE IN INCHES			
DRAWN	J.PHELAN	SHEET	1 OF 1	DRAWING SIZE	A2	DRAWING SCALE	1:1
DATE	09/04/2020	ISSUE	6	3RD ANGLE PROJECTION			
							DRAWING NUMBER
							DS0046